

RNAV (RNP) Z RWY 20L

NASHVILLE INTL (BNA)

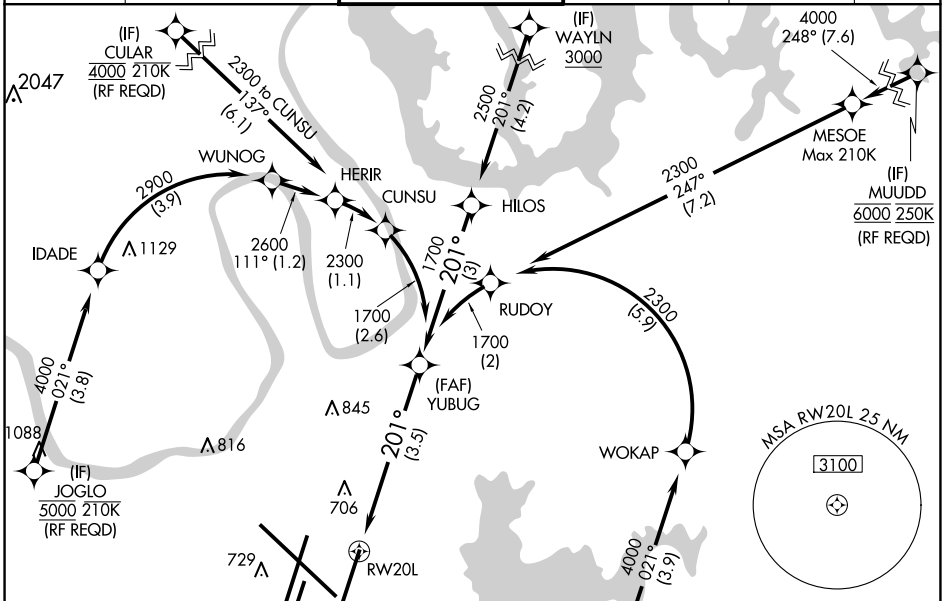
APP CRS	Rwy Idg	8000
201°	TDZE	551
	Apt Elev	599

GPS required. Simultaneous approach authorized with Rwy 20R. Use of FD or AP providing RNAV track guidance required during simultaneous operations. For uncompensated Baro-VNAV systems, procedure NA below -11°C (13°F) or above 54°C (130°F). Inop table does not apply to RNP 0.20. For inop MALSRL, increase RNP 0.30 all Cats visibility to 1½.

MALSRL

MISSED APPROACH: Climb to 1300 then climbing left turn to 4000 direct CENOP and hold.

D-ATIS 135.1	NASHVILLE APP CON 118.4 360.7	NASHVILLE TOWER 118.6 257.8	GND CON 121.9 348.6	CLNC DEL 126.05	CPDLC
------------------------	---	---------------------------------------	-------------------------------	---------------------------	-------



SE-1, 15 MAY 2025 to 12 JUN 2025

SE-1, 15 MAY 2025 to 12 JUN 2025

RADAR REQUIRED

ELEV 599 **D** TDZE 551

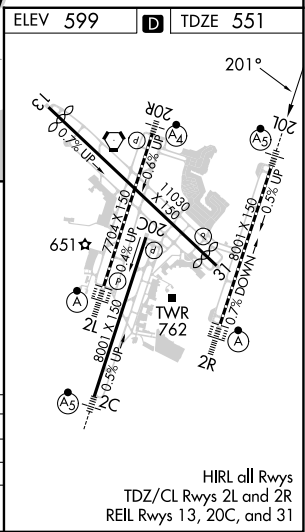
1300 4000 CENOP

See planview for multiple IF locations.

RW20L 201° 1700

GP 3.00° TCH 47

3.5 NM



CATEGORY	A	B	C	D
RNP 0.20 DA		810/40	259 (200-¾)	
RNP 0.30 DA		1008/55	457 (400-1)	

AUTHORIZATION REQUIRED