

WAAS CH <b>65913</b> <b>W31A</b>	APP CRS <b>316°</b>	Rwy Idg <b>9487</b> TDZE <b>578</b> Apt Elev <b>599</b>
--	------------------------	---

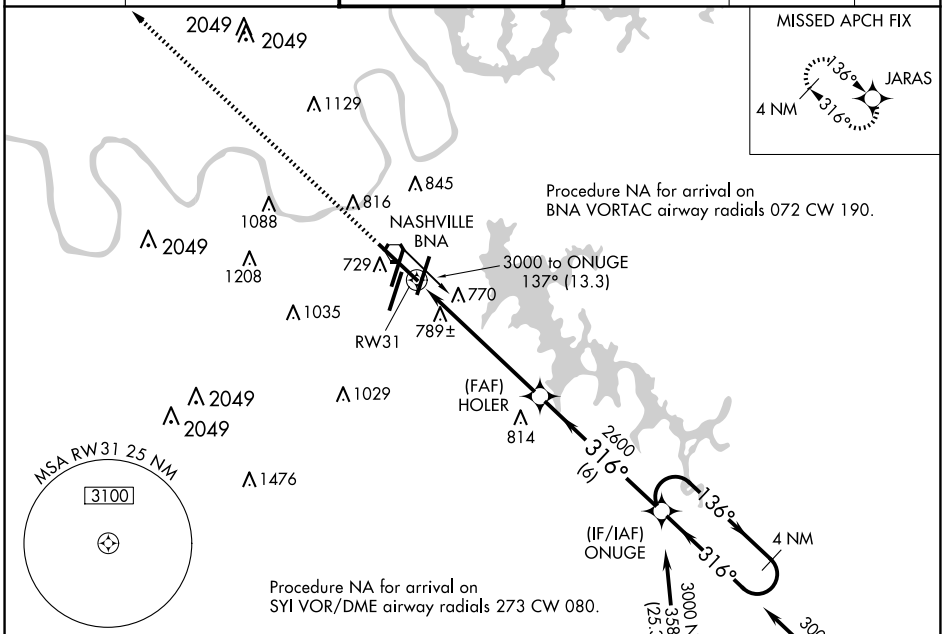
# RNAV (GPS) Y RWY 31

NASHVILLE INTL (BNA)

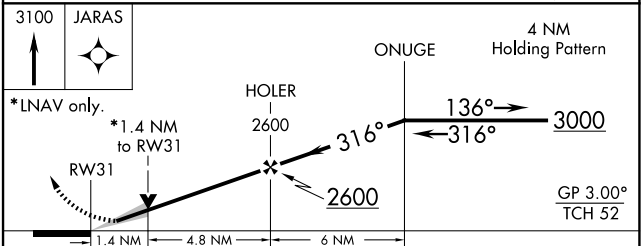
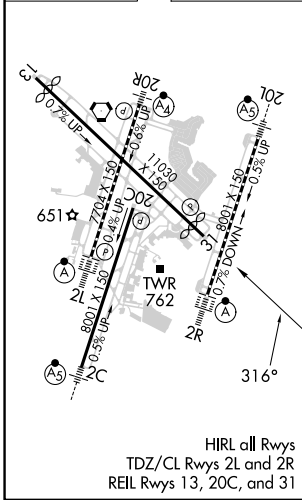
**⚠** For uncompensated Baro-VNAV systems, LNAV/VNAV NA below -11°C (13°F) or above 54°C (130°F).  
DME/DME RNP-0.3 NA.

MISSED APPROACH: Climb to 3100 direct JARAS and hold.

D-ATIS <b>135.1</b>	NASHVILLE APP CON <b>118.4 360.7</b>	NASHVILLE TOWER <b>118.6 257.8</b>	GND CON <b>121.9 348.6</b>	CLNC DEL <b>126.05</b>	CPDLC
------------------------	---	---------------------------------------	-------------------------------	---------------------------	-------



ELEV 599	<b>D</b>	TDZE 578
----------	----------	----------



CATEGORY	A	B	C	D
LPV DA		778-3/4	200 (200-3/4)	
LNAV/VNAV DA		1061-1 5/8	483 (500-1 5/8)	
LNAV MDA	1060-1	482 (500-1)	1060-1 3/8 482 (500-1 3/8)	
<b>C</b> CIRCLING	1100-1 501 (600-1)	1120-1 521 (600-1)	1200-1 3/4 601 (700-1 3/4)	1380-2 1/2 781 (800-2 1/2)

SE-1, 15 MAY 2025 to 12 JUN 2025

SE-1, 15 MAY 2025 to 12 JUN 2025