

LOC/DME I-BNA <b>109.9</b> Chan 36	APP CRS <b>021°</b>	Rwy ldg TDZE Apt Elev <b>7702</b> <b>599</b> <b>599</b>
--	------------------------	--

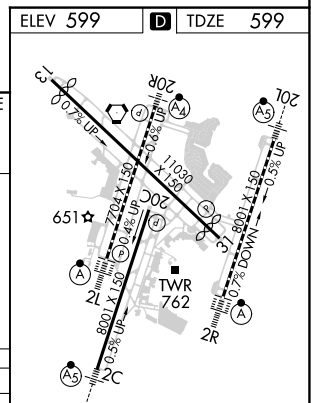
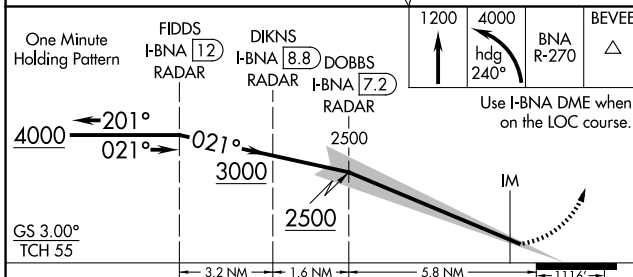
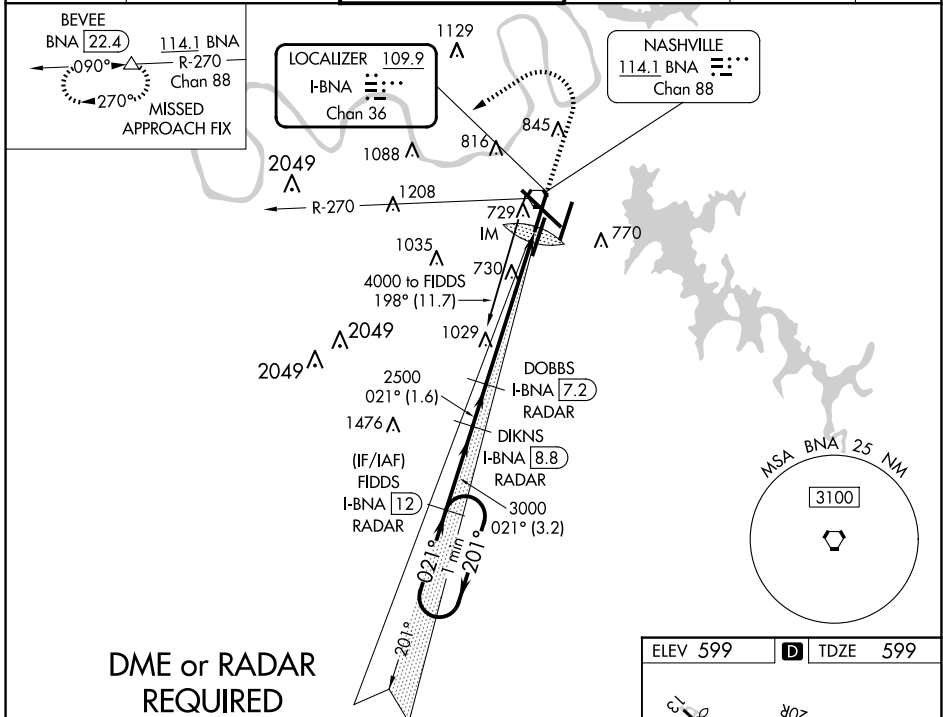
# ILS RWY 2L (SA CAT I)

NASHVILLE INTL (BNA)

**▽** Simultaneous approach authorized with Rwy 2R.  
DME or radar required.  
**▲** Requires specific OPSPEC, MSPEC, or LOA approval and use of HUD to DH.

**ALSIF-2**  
**(A)**  
MISSED APPROACH: Climb to 1200 then climbing left turn to 4000 on heading 240° and on BNA VORTAC R-270 to BEVEE/BNA 22.4 DME and hold.

D-ATIS <b>135.1</b>	NASHVILLE APP CON <b>118.4 360.7</b>	NASHVILLE TOWER <b>118.6 257.8</b>	GND CON <b>121.9 348.6</b>	CLNC DEL <b>126.05</b>	CPDLC
------------------------	---	---------------------------------------	-------------------------------	---------------------------	-------



CATEGORY	A	B	C	D
S-ILS 2L	RA 159/14 150 DA 749			

**SA CATEGORY I ILS - SPECIAL AIRCREW & AIRCRAFT CERTIFICATION REQUIRED**

HIRL all Rwys  
TDZ/CL Rwys 2L and 2R  
REIL Rwys 13, 20C, and 31

SE-1, 15 MAY 2025 to 12 JUN 2025

SE-1, 15 MAY 2025 to 12 JUN 2025