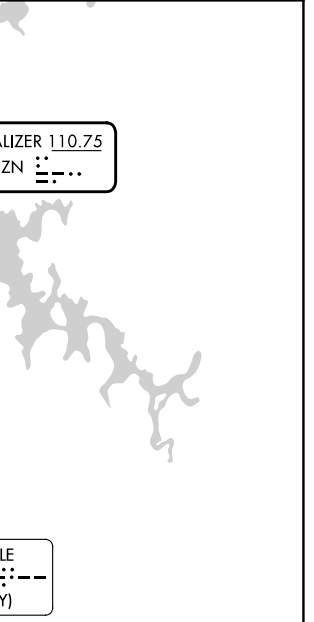
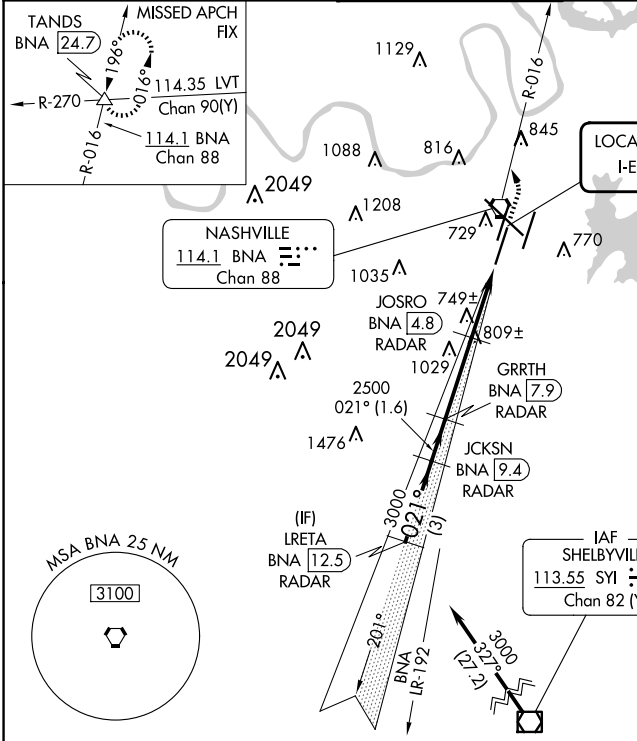


# ILS or LOC RWY 2C

NASHVILLE INTL (BNA)

LOC I-EZN <b>110.75</b>	APP CRS <b>021°</b>	Rwy Idg <b>7601</b>
		TDZE <b>587</b>
		Apt Elev <b>599</b>

DME or RADAR required.		MALSR		MISSED APPROACH: Climb to 1300 then climbing left turn to 4000 on BNA VORTAC R-016 to TANDS INT/BNA 24.7 and hold.	
▼ Simultaneous approach authorized. For inop ALS, increase S-LOC 2C Cats C and D visibility to RVR 6000. DME from BNA VORTAC. ▲ Simultaneous reception of I-EZN and BNA DME required. #RVR 1800 authorized with the use of FD or AP or HUD to DA.					
D-ATIS <b>135.1</b>	NASHVILLE APP CON <b>118.4 360.7</b>	NASHVILLE TOWER <b>118.6 257.8</b>	GND CON <b>121.9 348.6</b>	CLNC DEL <b>126.05</b>	CPDLC



VGSI and ILS glidepath not coincident.				1300	4000	BNA R-016	TANDS
LRETA BNA 12.5 RADAR	JCKSN BNA 9.4 RADAR	GRRTH BNA 7.9 RADAR	JOSRO BNA 4.8 RADAR				△
3000 - 021°				*LOC only.			
GS 3.00° TCH 60							
3 NM				1.6 NM	3.1 NM	1.6 NM	1.2 NM
CATEGORY	A	B	C	D			
S-ILS 2C #	787/24			200 (200-1/2)			
S-LOC 2C	1000/24	413 (500-1/2)	1000/40	413 (500-3/4)			
CIRCLING	1100-1 501 (600-1)	1120-1 521 (600-1)	1200-1 3/4 601 (700-1 3/4)	1380-2 1/2 781 (800-2 1/2)			

ELEV	599	TDZE	587
HIRL all Rwys TDZ/CL Rwys 2L and 2R REIL Rwys 13, 20C, and 31			
FAF to MAP 5.9 NM			
Knots	60	90	120 150 180
Min:Sec	5:54	3:56	2:57 2:22 1:58

SE-1, 15 MAY 2025 to 12 JUN 2025

SE-1, 15 MAY 2025 to 12 JUN 2025