

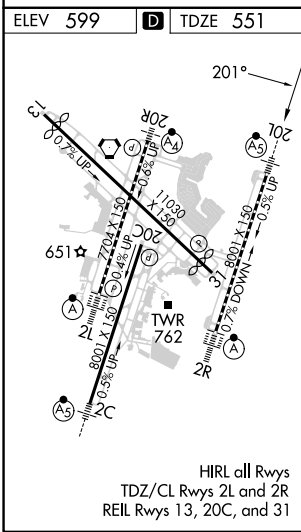
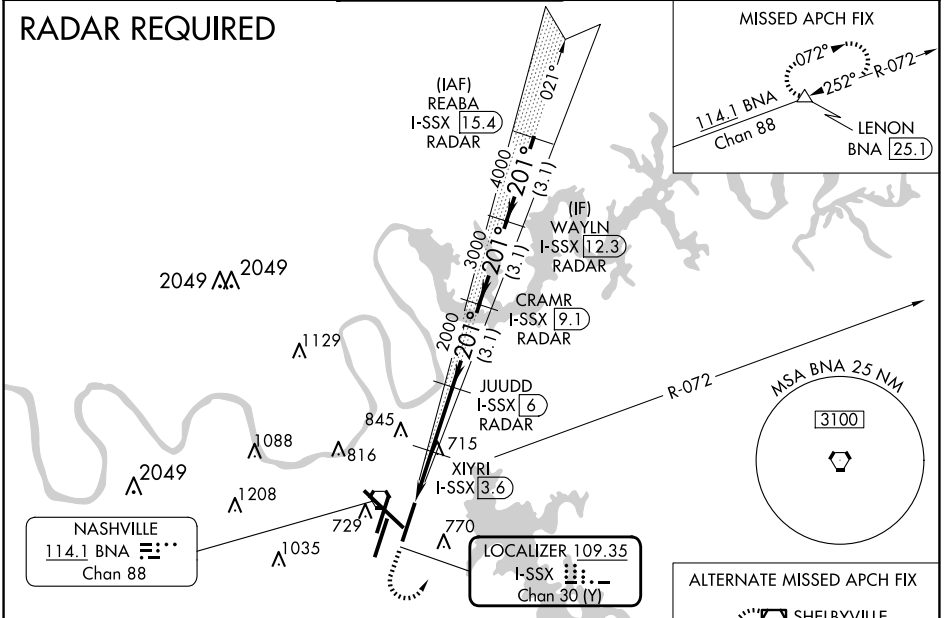
LOC/DME I-SSX 109.35 Chan 30 (Y)	APP CRS 201°	Rwy Idg TDZE 8000 551 Apt Elev 599
---	------------------------	---

ILS or LOC/DME RWY 20L

NASHVILLE INTL (BNA)

▽ Simultaneous approach authorized with Rwy 20R. ▲ DME required. **RVR 1800 authorized with the use of FD or AP or HUD to DA.	MALSRR 	MISSED APPROACH: Climb to 1300 then climbing left turn to 3000 on heading 040° and BNA VORTAC R-072 to LENON/BNA 25.1 DME and hold.			
	D-ATIS 135.1	NASHVILLE APP CON 118.4 360.7	NASHVILLE TOWER 118.6 257.8	GND CON 121.9 348.6	CLNC DEL 126.05

RADAR REQUIRED



ELEV 599	D	TDZE 551
1300	3000	BNA LENON R-072
*LOC only.		
I-SSX 1.6	I-SSX 2.8	I-SSX 3.6
JUDD I-SSX 6 RADAR		
CRAMR I-SSX 9.1 RADAR		
WAYLN I-SSX 12.3 RADAR		
REABA I-SSX 15.4 RADAR		
201°	5000	GS 3.00° TCH 55
1.2	0.8	2.4 NM
CATEGORY		
S-ILS 20L ** 751/24 200 (200-½)		
S-LOC 20L 980/24 429 (400-½) 980/40 429 (400-¾)		
C CIRCLING 1100-1 501 (600-1) 1120-1 521 (600-1) 1200-1¾ 601 (700-1¾) 1380-2½ 781 (800-2½)		

SE-1, 15 MAY 2025 to 12 JUN 2025

SE-1, 15 MAY 2025 to 12 JUN 2025