

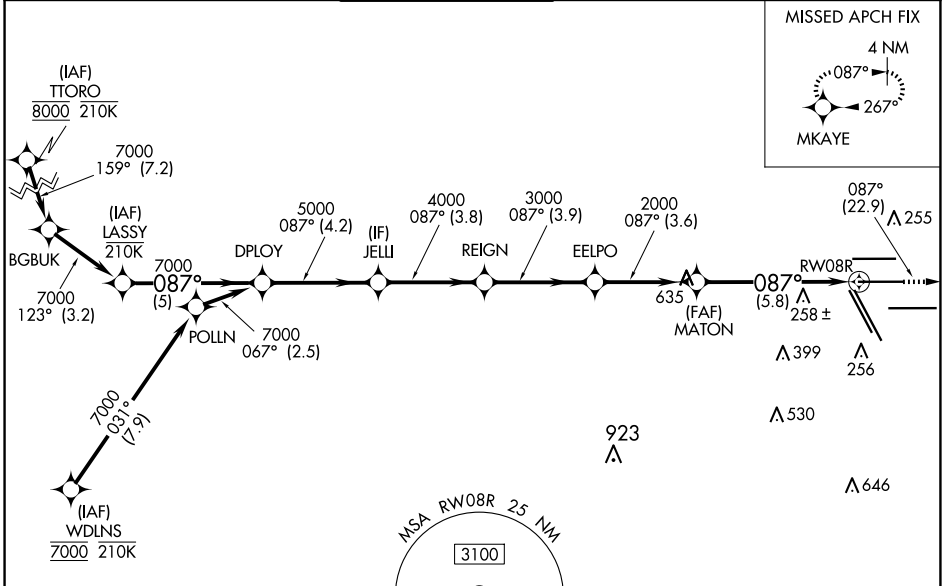
APP CRS	Rwy Idg	<b>9402</b>
<b>087°</b>	TDZE	<b>95</b>
	Apt Elev	<b>96</b>

# RNAV (RNP) Y RWY 8R

GEORGE BUSH INTCNL/HOUSTON (IAH)

RNP AR APCH.		MALSR	MISSED APPROACH: Climb to 3000 on track 087° to MKAYE and hold.	
<p>For uncompensated Baro-VNAV systems, procedure NA below -3°C or above 54°C. For inop ALS increase RNP 0.13 all Cats visibility to RVR 4500, RNP 0.14 all Cats visibility to RVR 5600, RNP 0.30 all Cats visibility to 1¼ SM. Simultaneous approach authorized.</p>				

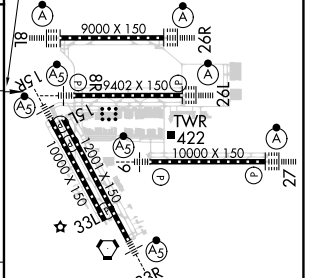
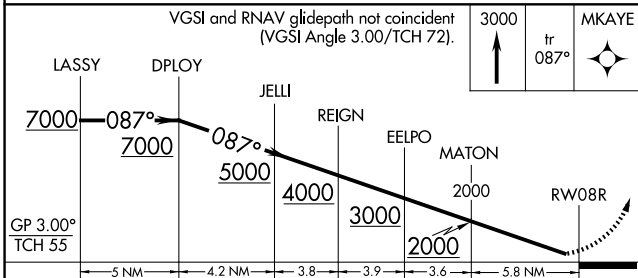
D-ATIS	HOUSTON APP CON	HOUSTON TOWER	GND CON	CLNC DEL	CPDLC
<b>124.05</b>	<b>120.05 379.1 EAST</b> <b>124.35 316.15 WEST</b>	<b>125.35 290.2</b>	<b>118.575</b>	<b>128.1</b>	



SC-5, 15 MAY 2025 to 12 JUN 2025

SC-5, 15 MAY 2025 to 12 JUN 2025

ELEV 96	TDZE 95
---------	---------



CATEGORY	A	B	C	D
RNP 0.13 DA		383/40	288 (300-¾)	
RNP 0.14 DA		441/40	346 (400-¾)	
RNP 0.30 DA		492/45	397 (400-¾)	

**AUTHORIZATION REQUIRED**

TDZ/CL Rwy 8R, 8L, 15R, 26R, 26L, 27 and 33L  
HIRL all Rwys