

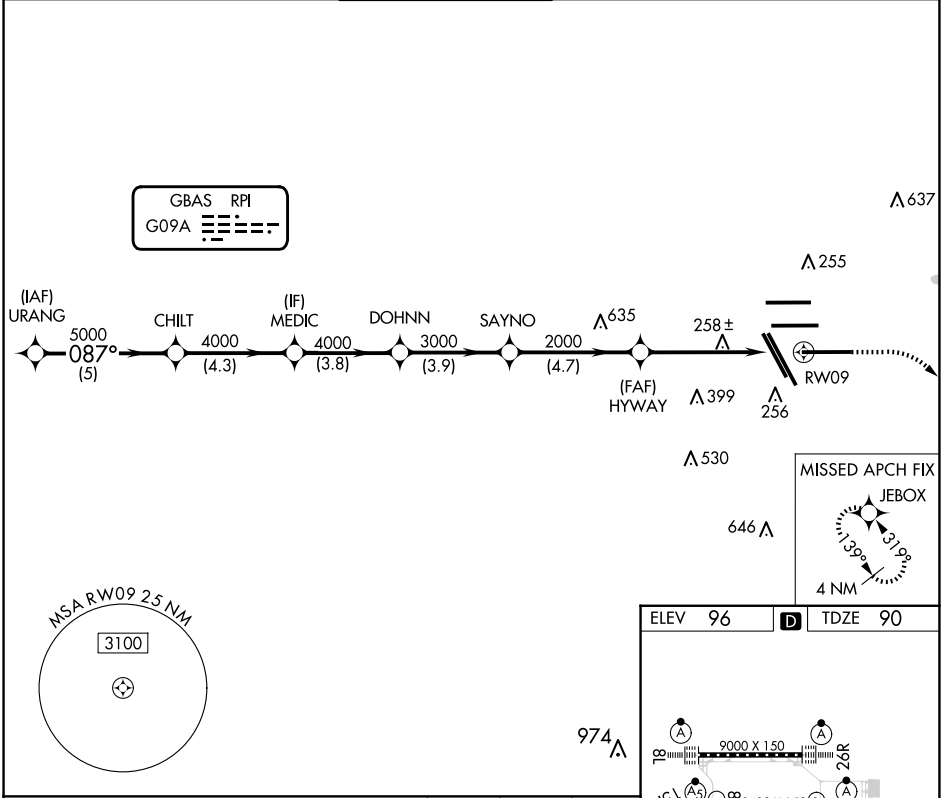
GBAS CH <b>21895</b> RPI <b>G09A</b>	APP CRS <b>087°</b>	Rwy Idg <b>10000</b> TDZE <b>90</b> Apt Elev <b>96</b>
--	------------------------	--

# GLS RWY 9

GEORGE BUSH INTCNL/HOUSTON (IAH)

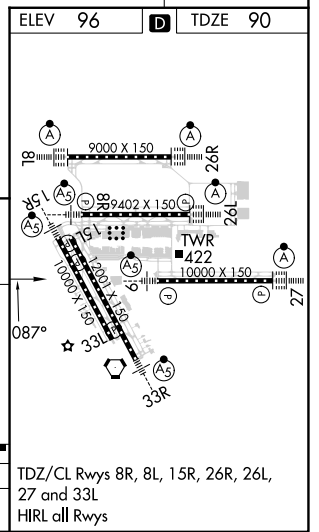
RNP APCH - GPS.		MALSR 	MISSED APPROACH: Climb to 580 then climbing right turn to 3000 direct JEBOX and hold.
 Simultaneous approach authorized. Use of FD or AP required during simultaneous operations. Autopilot coupled approach NA below 290. ** RVR 1800 authorized with use of FD or AP or HUD to DA.			

D-ATIS <b>124.05</b>	HOUSTON APP CON <b>120.05 379.1</b> EAST <b>124.35 316.15</b> WEST	HOUSTON TOWER <b>135.15 290.2</b>	GND CON <b>118.575</b>	CLNC DEL <b>128.1</b>	CPDLC
-------------------------	--	--------------------------------------	---------------------------	--------------------------	-------



VGSI and GLS glidepath not coincident (VGSI Angle 3.00/TCH 71).

URANG	CHILT	MEDIC	DOHNN	SAYNO	HYWAY	RW09
5000	5000	4000	4000	3000	2000	
GP 3.00°						
TCH 50						
	5 NM	4.3 NM	3.8 NM	3.9 NM	4.7 NM	5.8 NM
CATEGORY	A	B	C	D	E	
GLS DA**	290/24		200 (200-½)			



SC-5, 15 MAY 2025 to 12 JUN 2025

SC-5, 15 MAY 2025 to 12 JUN 2025