

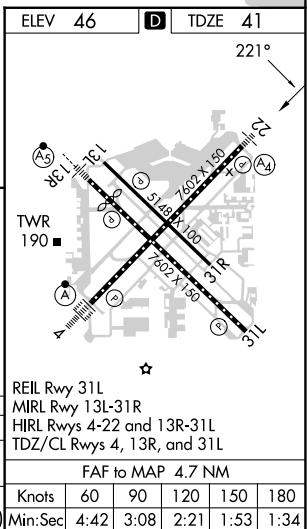
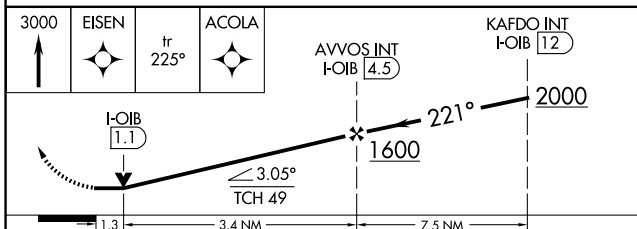
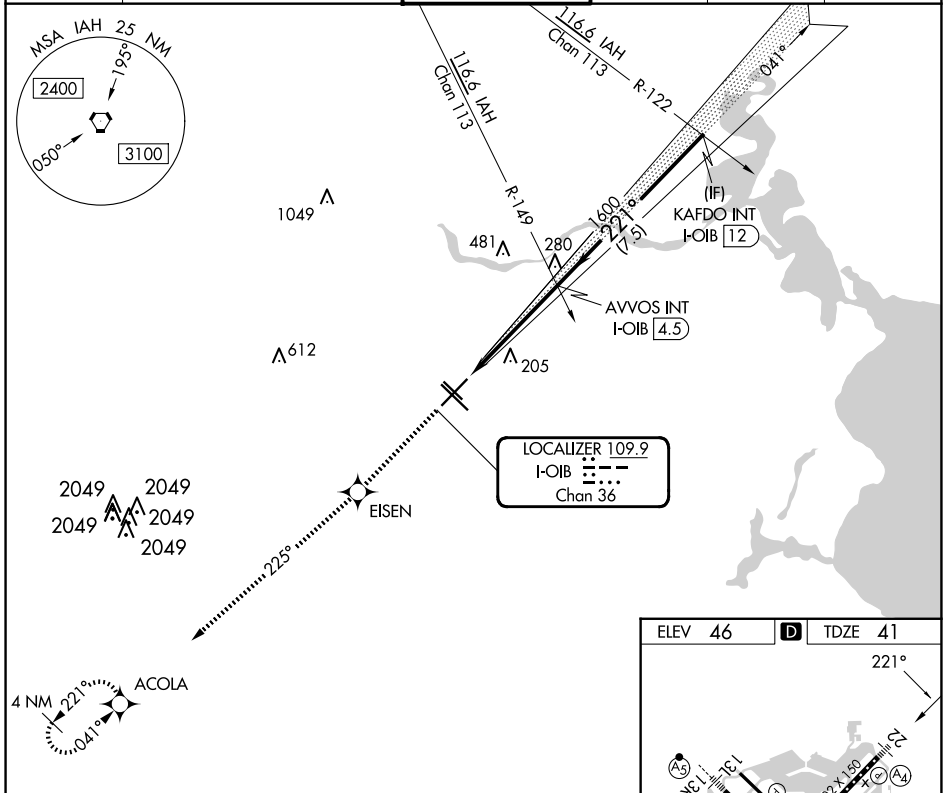
LOC/DME I-OIB <b>109.9</b> Chan <b>36</b>	APP CRS <b>221°</b>	Rwy Idg <b>7602</b> TDZE <b>41</b> Apt Elev <b>46</b>
---	------------------------	---

# LOC RWY 22

WILLIAM P HOBBY (HOU)

RNAV 1-GPS required. RADAR required for procedure entry.		MALS 	MISSED APPROACH: Climb to 3000 direct EISEN and on track 225° to ACOLA and hold.	
 For inop ALS, increase S-LOC 22 Cat C/D/E visibility to 1 3/8 SM.				

D-ATIS <b>124.6</b>	HOUSTON APP CON <b>120.05 379.1 EAST</b> <b>124.35 316.15 WEST</b>	HOBBY TOWER <b>118.7 256.9</b>	GND CON <b>121.9</b>	CLNC DEL <b>125.45</b>	CPDLC
------------------------	--	-----------------------------------	-------------------------	---------------------------	-------



CATEGORY	A	B	C	D	E
S-LOC 22	500-3/4	459 (500-3/4)	500-1	459 (500-1)	
<b>C</b> CIRCLING	500-1 454 (500-1)	520-1 474 (500-1)	540-1 1/2 494 (500-1 1/2)	740-2 1/4 694 (700-2 1/4)	820-2 3/4 774 (800-2 3/4)

SC-5, 15 MAY 2025 to 12 JUN 2025

SC-5, 15 MAY 2025 to 12 JUN 2025