

WAAS CH <b>48831</b> <b>W36A</b>	APP CRS <b>359°</b>	Rwy Idg TDZE Apt Elev	<b>6001</b> <b>5</b> <b>6</b>
--	------------------------	-----------------------------	-------------------------------------

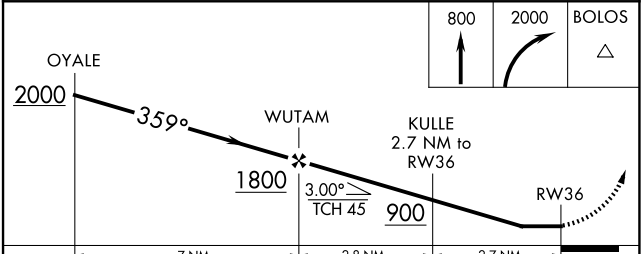
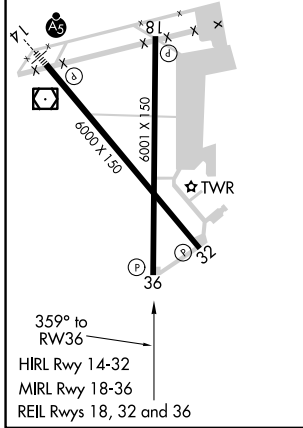
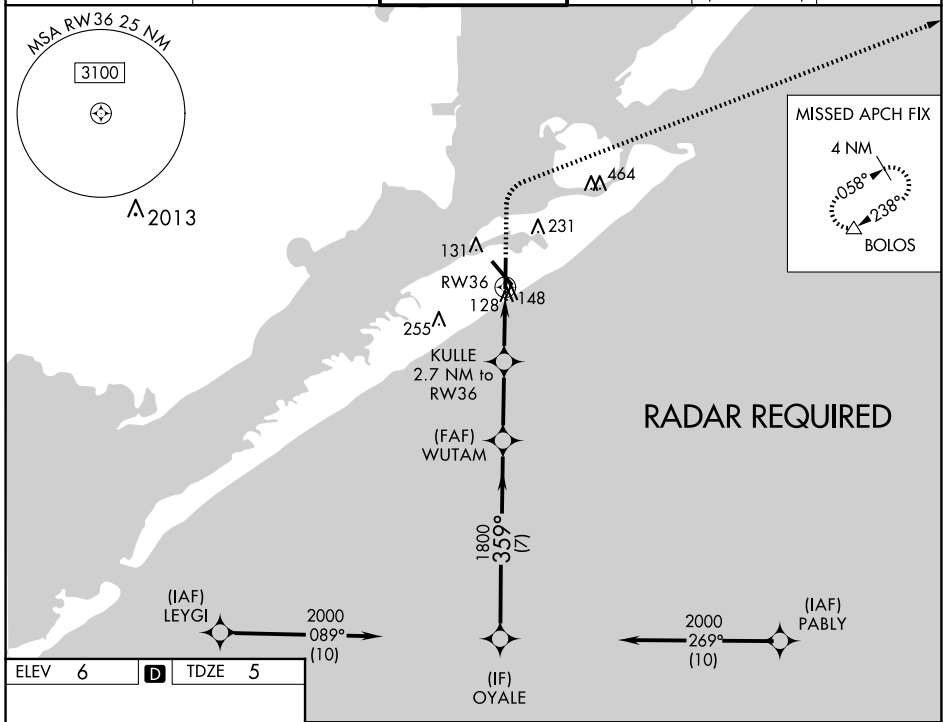
# RNAV (GPS) RWY 36

SCHOLES INTL AT GALVESTON (GLS)

**⚠** When VGSI inop, Straight-in/Circling Rwy 36 procedure NA at night. Circling NA east of Rwy 18 and northeast of Rwy 32. DME/DME RNP-0.3 NA. Helicopter visibility reduction below 1 SM NA. When local altimeter setting not received, use William P Hobby altimeter setting; increase all MDA 80 feet. Increase LP Cat C/D/E visibility 1/8 SM, LNAV Cat C/D/E visibility 1/8 SM and Circling Cat C/D/E visibility 1/4 SM.

**MISSED APPROACH:**  
Climb to 800 then climbing right turn to 2000 direct BOLOS and hold.

ASOS <b>123.95</b>	HOUSTON APP CON <b>134.45 284.0</b>	GALVESTON TOWER * <b>120.575</b> (CTAF) <b>0</b>	GND CON <b>118.625</b>	CLNC DEL <b>135.35</b> (When twr closed)	UNICOM <b>123.05</b>
-----------------------	--	---	---------------------------	--	-------------------------



		DISTANCE				
		7 NM	2.8 NM	2.7 NM		
CATEGORY		A	B	C	D	E
LP	MDA	440-1	435 (500-1)	440-1¼	435 (500-1¼)	
LNAV	MDA	460-1	455 (500-1)	460-1⅜	455 (500-1⅜)	
CIRCLING		500-1	520-1	620-1¾	620-2	620-2¼
		494 (500-1)	514 (600-1)	614 (700-1¾)	614 (700-2)	614 (700-2¼)

SC-5, 15 MAY 2025 to 12 JUN 2025

SC-5, 15 MAY 2025 to 12 JUN 2025