

LOC I-GLS 111.7	APP CRS 138°	Rwy ldg TDZE Apt Elev 6000 5 6
---------------------------	------------------------	--

ILS or LOC RWY 14

SCHOLES INTL AT GALVESTON (GLS)

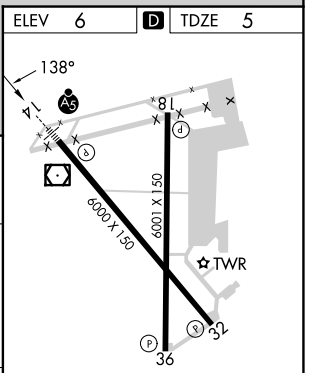
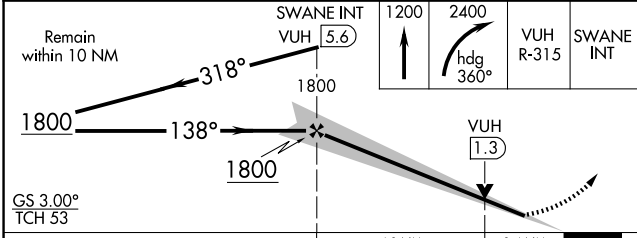
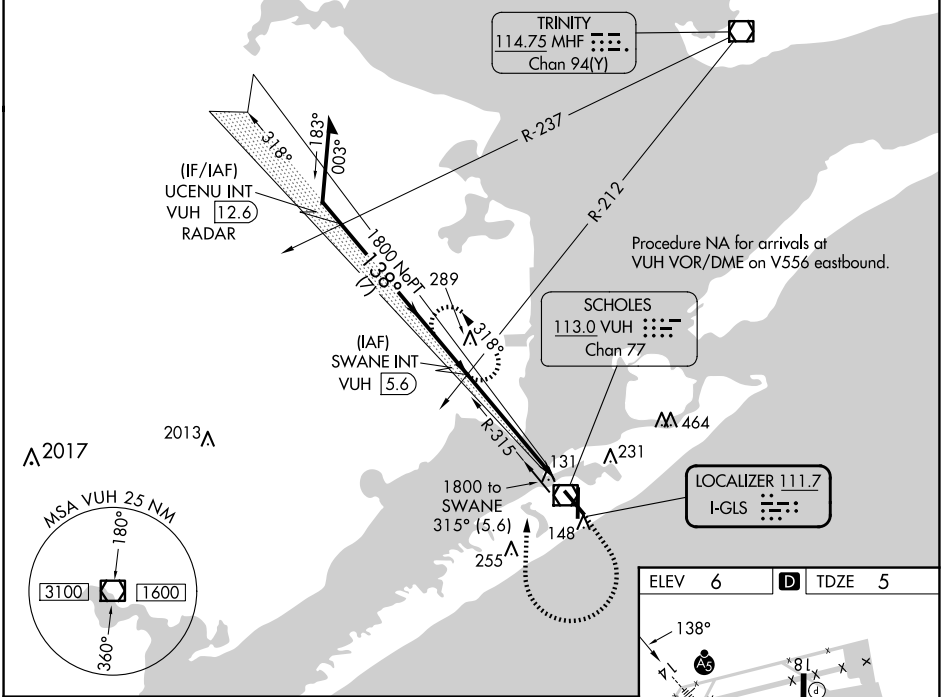
RADAR required for procedure entry at UCENU.

NA Circling NA east of Rwy 18 and northeast of Rwy 32. For inop ALS, increase S-LOC 14 Cat A and B visibility to 1 SM. DME from VUH VOR/DME. Simultaneous reception of I-GLS and VUH DME required.

MALSR
AS

MISSED APPROACH: Climb to 1200 then climbing right turn to 2400 on heading 360° and VUH VOR/DME R-315 to SWANE INT/VUH 5.6 DME and hold, continue climb-in-hold to 2400.

ASOS 123.95	HOUSTON APP CON 134.45 284.0	GALVESTON TOWER * 120.575 (CTAF) 0	GND CON 118.625	CLNC DEL 135.35 (When twr dosed)	UNICOM 123.05
-----------------------	--	---	---------------------------	---	-------------------------



CATEGORY	A	B	C	D
S-ILS 14	205-½ 200 (200-½)			
S-LOC 14	460-½ 455 (500-½)	460-7/8 455 (500-7/8)		
CIRCLING	500-1 494 (500-1)	520-1 514 (600-1)	620-1¾ 614 (700-1¾)	620-2 614 (700-2)

REIL Rwy 18, 32, and 36
MIRL Rwy 18-36
HIRL Rwy 14-32

FAF to MAP 5.5 NM

Knots	60	90	120	150	180
Min:Sec	5:30	3:40	2:45	2:12	1:50

SC-5, 15 MAY 2025 to 12 JUN 2025

SC-5, 15 MAY 2025 to 12 JUN 2025