

TACAN EFD Chan <b>31</b> (109.4)	APP CRS <b>226°</b>	Rwy Idg <b>8001</b> TDZE <b>31</b> Apt Elev <b>33</b>
--	------------------------	---

# TACAN RWY 22

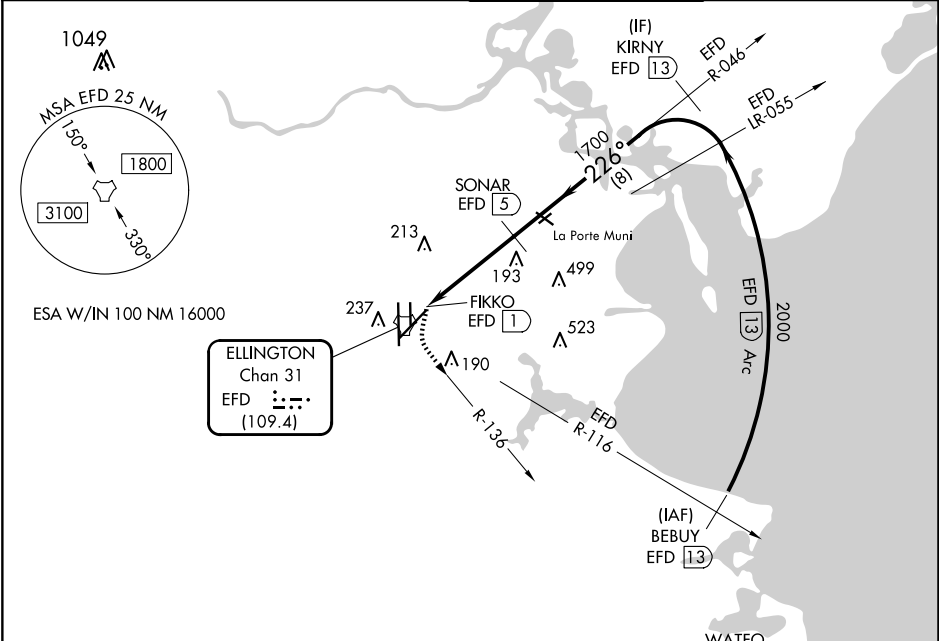
ELLINGTON (EFD)

**∇** Circling NA west of Rwy 17R-35L. When ALS inop, increase S-22  
**△** NA Cat A/B visibility to RVR 5500 and Cat C/D/E to 1 3/8 miles.



**MISSED APPROACH:** Climbing left turn to 3100 on EFD TACAN R-136 to WATFO/EFD 16 DME and hold.

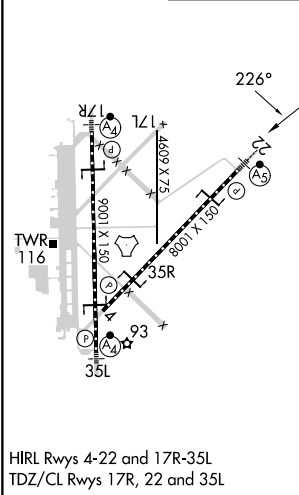
ATIS <b>135.575 269.9</b>	HOUSTON APP CON <b>134.45 284.0</b>	ELLINGTON TOWER <b>126.05 253.5</b>	GND CON <b>121.6 275.8</b>
------------------------------	--	--	-------------------------------



SC-5, 15 MAY 2025 to 12 JUN 2025

SC-5, 15 MAY 2025 to 12 JUN 2025

ELEV 33	<b>D</b>	TDZE 31
---------	----------	---------



## RADAR REQUIRED

3100 EFD R-136	WATFO EFD 16	VGSI and descent angles not coincident (VGSI Angle 3.00/TCH 50).	KIRNY EFD 13		
Cat D/E VDA not for civil use.		SONAR EFD 5	2000		
FIKKO EFD 1		1700			
EFD 2.2		226°			
≤ 3.69° TCH 55					
0.2 1.2 2.7 NM		8 NM			
CATEGORY	A	B	C	D	E
S-22	500/24	469 (500-1/2)	500/50	469 (500-1)	
<b>C</b> CIRCLING	500-1	467 (500-1)	580-1 1/2 547 (600-1 1/2)	640-2 607 (700-2)	700-2 1/4 667 (700-2 1/4)