

WAAS CH 72616 W34A	APP CRS 345°	Rwy Idg TDZE Apt Elev	5070 14 15
--	------------------------	-----------------------------	---------------------------------------

RNAV (GPS) RWY 34

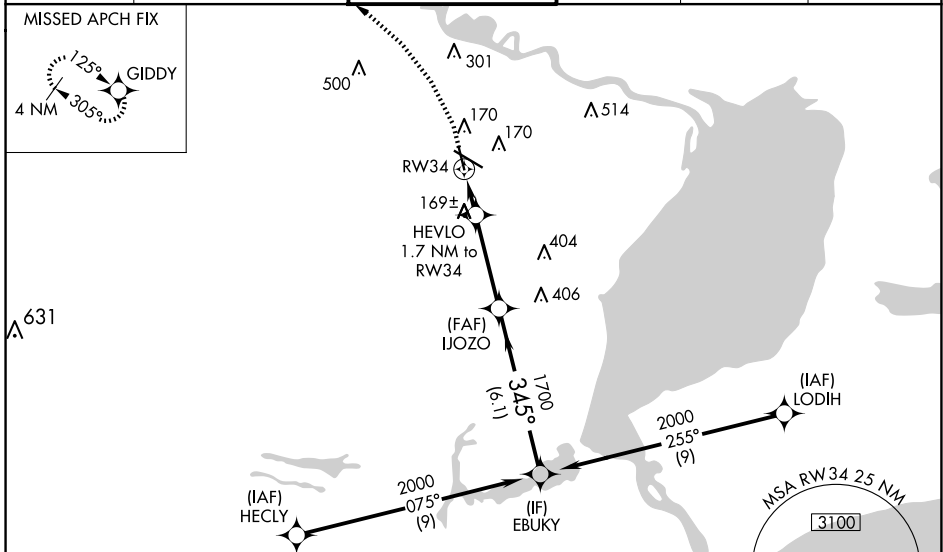
JACK BROOKS RGNL (BPT)

RNP APCH - GPS.

⚠ Baro-VNAV NA when using Orange County altimeter setting. For uncompensated Baro-VNAV systems, LNAV/VNAV NA below -4°C or above 54°C. When local altimeter setting not received, use Orange County altimeter setting: increase LPV DA to 346 feet; increase LNAV/VNAV DA to 347 feet and all visibilities 1/8 SM; increase all MDAs 40 feet.

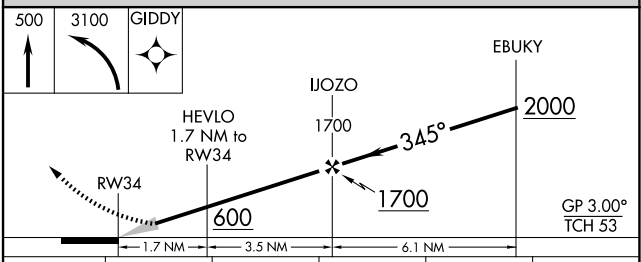
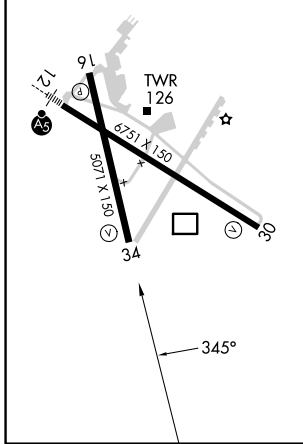
MISSED APPROACH: Climb to 500 then climbing left turn to 3100 direct GIDDY and hold, continue climb-in-hold to 3100.

ATIS 126.3	HOUSTON APP CON 121.3 377.1	BEAUMONT TOWER* 119.5 (CTAF) 0	GND CON 124.85	CLNC DEL 118.3	UNICOM 122.95
----------------------	---------------------------------------	---	--------------------------	--------------------------	-------------------------



ELEV 15	D	TDZE 14
---------	----------	---------

REIL Rwy 16, 30 and 34 **0**
HIRL Rwy 12-30, 16-34 **0**



CATEGORY	A	B	C	D	E
LPV DA	214-3/4		200 (200-3/4)		
LNAV/VNAV DA	315-7/8		301 (300-7/8)		
LNAV MDA	480-1	466 (500-1)	480-13/8	466 (500-13/8)	

SC-5, 15 MAY 2025 to 12 JUN 2025

SC-5, 15 MAY 2025 to 12 JUN 2025