

WAAS CH 86316 W16A	APP CRS 165°	Rwy Idg TDZE Apt Elev	6003 318 318
--	------------------------	-----------------------------	---

RNAV (GPS) RWY 16

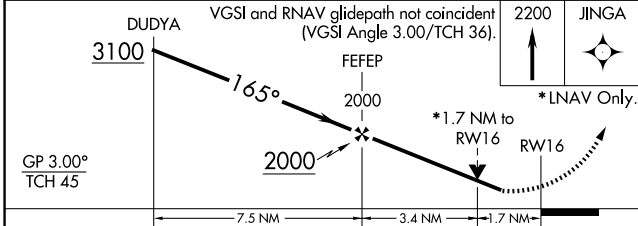
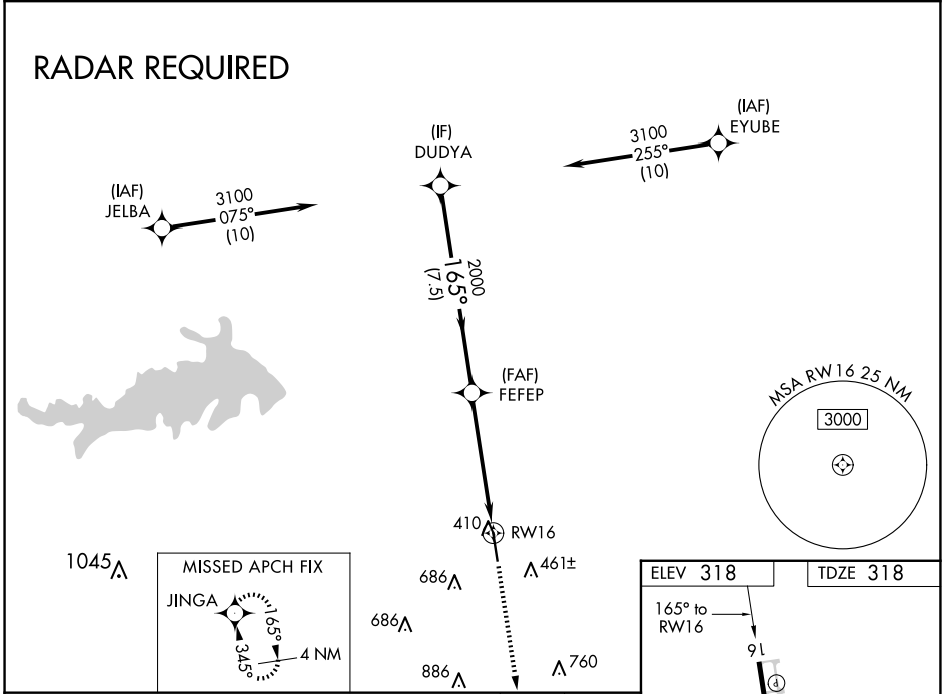
BRENHAM MUNI (11R)

RNP APCH.

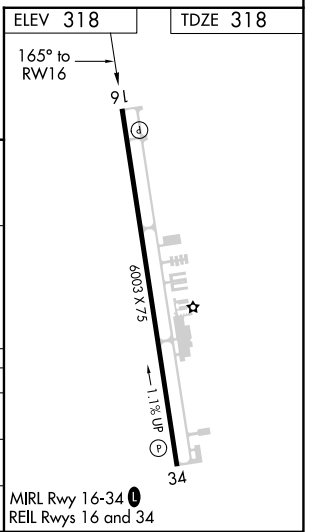
⚠ Rwy 16 helicopter visibility reduction below 3/4 SM NA. For uncompensated Baro-VNAV systems, LNAV/VNAV NA below -15°C or above 37°C. When local altimeter setting not received, use College Station altimeter setting and increase all DA 52 feet, and all MDA 60 feet, increase LPV and LNAV/VNAV all Cats and LNAV Cats C/D visibility 1/4 SM. VDP and Baro-VNAV NA with College Station altimeter setting.

MISSED APPROACH: Climb to 2200 direct JINGA and hold.

AWOS-3 121.125	HOUSTON APP CON 134.3 360.85	UNICOM 123.075 (CTAF) ①
--------------------------	--	-----------------------------------



CATEGORY	A	B	C	D
LPV DA	594-7/8		276 (300-7/8)	
LNAV/VNAV DA	680-1 1/4		362 (400-1 1/4)	
LNAV MDA	880-1	562 (600-1)	880-1 5/8	562 (600-1 5/8)



SC-5, 15 MAY 2025 to 12 JUN 2025

SC-5, 15 MAY 2025 to 12 JUN 2025