

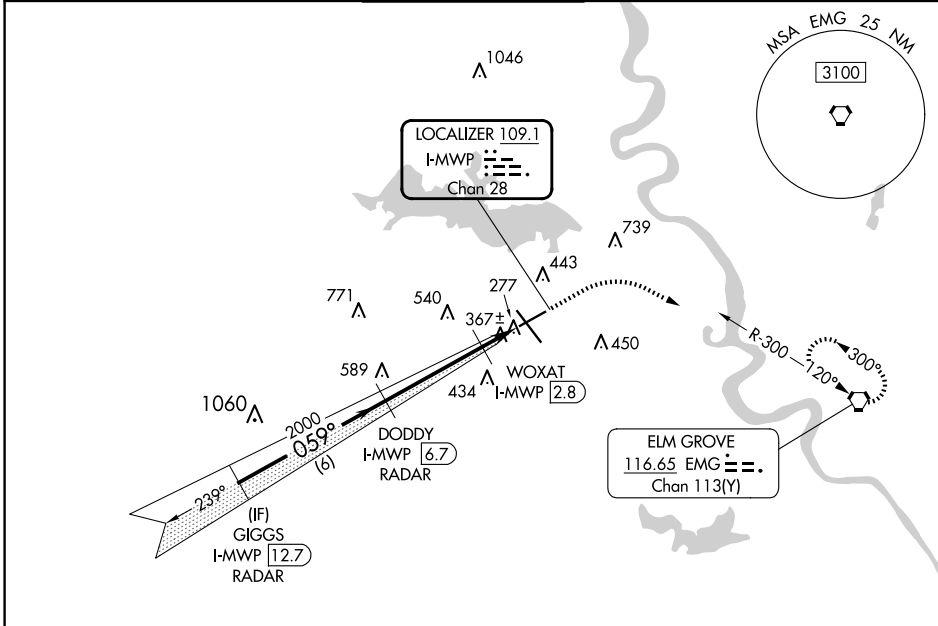
LOC/DME I-MWP 109.1 Chan 28	APP CRS 059°	Rwy Idg TDZE Apt Elev	7003 238 258
---	------------------------	-----------------------------	---

LOC RWY 6
SHREVEPORT RGNL (SHV)

RADAR required for procedure entry. RADAR or DME required.
 ⚠️ Rwy 6 helicopter visibility reduction below 3/4 SM NA.
 ASR

MISSED APPROACH: Climb to 700 then climbing right turn to 2000 direct EMG VORTAC and hold.

ATIS 128.45	SHREVEPORT APP CON 119.9 335.55	SHREVEPORT TOWER 121.4 236.775	GND CON 121.175 236.775	CLNC DEL 124.65
-----------------------	---	--	-----------------------------------	---------------------------



SC-4, 15 MAY 2025 to 12 JUN 2025

SC-4, 15 MAY 2025 to 12 JUN 2025

ELEV 258		TDZE 238	
700		2000	
EMG			
GIGGS I-MWP 12.7 RADAR 2000 — 059° — 2000		DODDY I-MWP 6.7 RADAR 2000 — 059° — 740	
		WOXAT I-MWP 2.8 I-MWP 1.4 3.00° TCH 51	
6 NM		4 NM	
CATEGORY	A	B	C
S-LOC 6	740-1	502 (500-1)	740-1 3/8 502 (500-1 3/8)
CIRCLING	760-1	502 (600-1)	980-2 722 (800-2) 1100-2 3/4 842 (900-2 3/4) 1100-3 842 (900-3)
WOXAT FIX MINIMUMS			
S-LOC 6	620-1	382 (400-1)	620-1 1/8 382 (400-1 1/8)
CIRCLING	760-1	502 (600-1)	980-2 722 (800-2) 1100-2 3/4 842 (900-2 3/4) 1100-3 842 (900-3)

