

WAAS CH <b>58322</b> <b>W18A</b>	APP CRS <b>178°</b>	Rwy ldg TDZE Apt Elev	<b>5005</b> <b>140</b> <b>140</b>
--	------------------------	-----------------------------	---

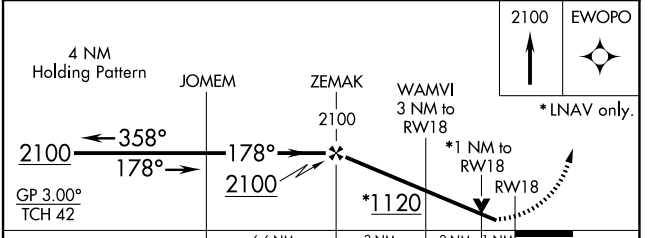
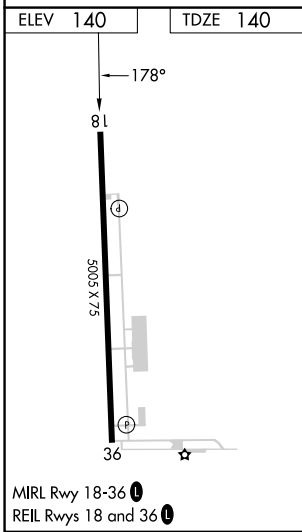
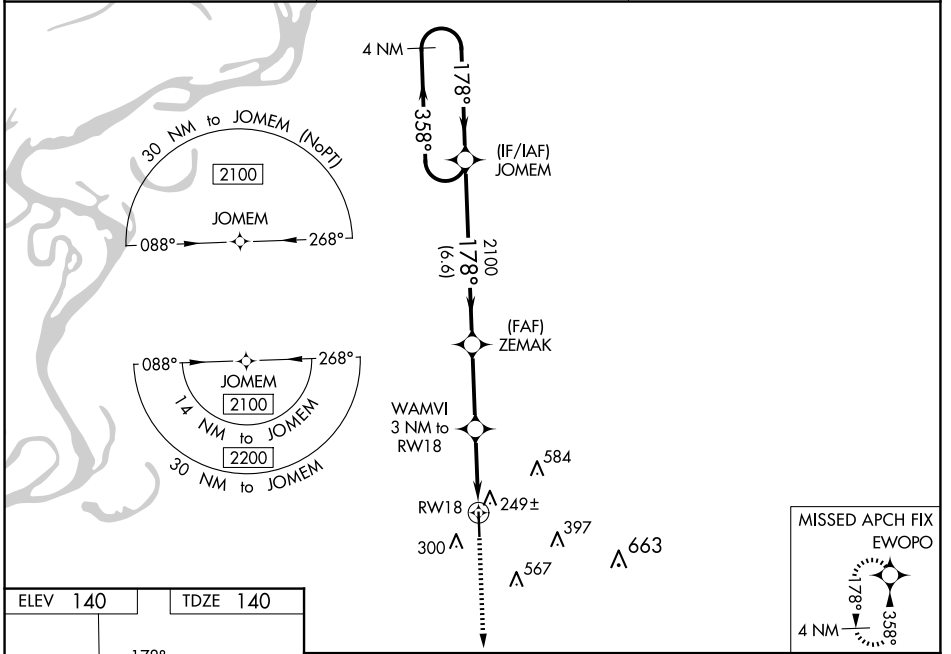
# RNAV (GPS) RWY 18

CLEVELAND MUNI (RNV)

**⚠** For uncompensated Baro-VNAV systems, LNAV/VNAV NA below -1.5°C (5°F) or above 54°C (130°F). DME/DME RNP-0.3 NA. When local altimeter setting not received, use Greenville altimeter setting and increase LPV DA to 438, LNAV/VNAV DA to 597, and all MDA 60 feet; increase LPV all Cats and LNAV Cats C/D visibility ½ mile, increase LNAV/VNAV all Cats visibility ¼ mile. Baro-VNAV and VDP NA when using Greenville altimeter setting. Rwy 18 helicopter visibility reduction below ¾ SM NA.

**⚠** MISSED APPROACH: Climb to 2100 direct EWOP and hold.

AWOS-3PT <b>124.175</b>	MEMPHIS CENTER <b>135.875 269.35</b>	UNICOM <b>122.725 (CTAF) 0</b>
----------------------------	---	-----------------------------------



CATEGORY	A	B	C	D
LPV DA		390-7/8	250 (300-7/8)	
LNAV/VNAV DA		549-13/8	409 (500-13/8)	
LNAV MDA		500-1	360 (400-1)	
<b>C</b> CIRCLING	600-1	460 (500-1)	900-2¼ 760 (800-2¼)	900-2½ 760 (800-2½)

SC-4, 15 MAY 2025 to 12 JUN 2025

SC-4, 15 MAY 2025 to 12 JUN 2025