

FORT JOHNSON, LOUISIANA

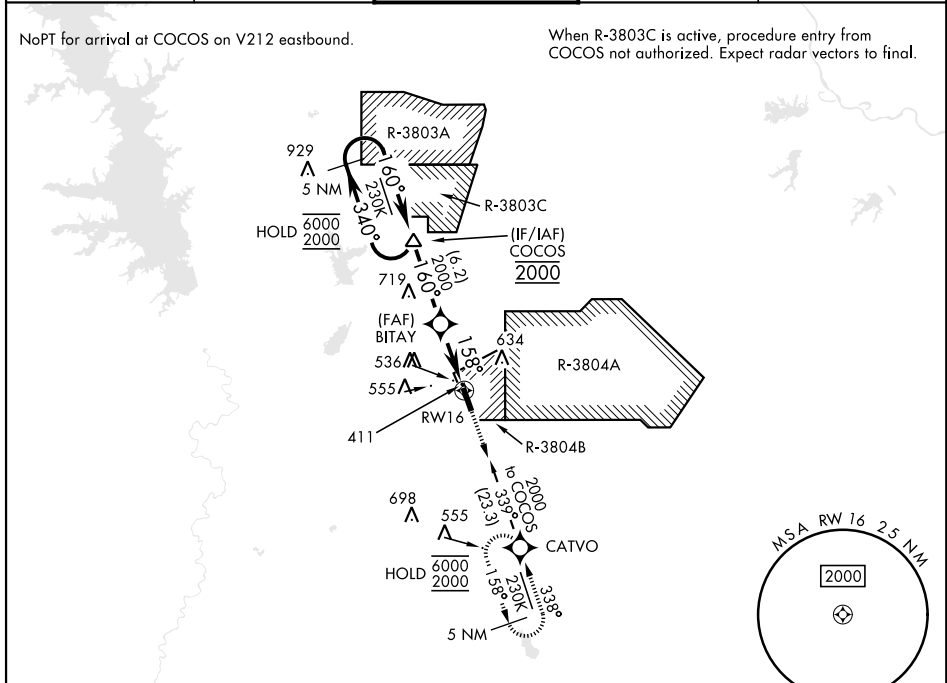
# RNAV (GPS) RWY 16

WAAS CH <b>99069</b> <b>W16A</b>	APCH CRS <b>158°</b>	Rwy ldg <b>3913</b> TDZE <b>328</b> Arprt Elev <b>330</b>	[USA]	MAKS AAF (KPOE)
--	-------------------------	---	-------	-----------------

RNP APCH - GPS	MISSED APPROACH: Climb to 2000 direct CATVO and hold.
RADAR required for arrivals at CATVO.	

▼ For uncompensated Baro-VNAV systems, LNAV/VNAV not authorized below -15°C or above 54°C.  
When control tower is closed, increase vis to 1 mile.

ATIS <b>134.85 282.2</b>	APP CON <b>123.7 261.3</b>	TOWER ★ <b>119.0 (CTAF) 257.75</b>	GND CON <b>121.8 239.25</b>	ASR/PAR
-----------------------------	-------------------------------	---------------------------------------	--------------------------------	---------



ELEV <b>330</b>	TDZE <b>328</b>
Rwy 16 ldg 3913'	

CAUTION:  
Rwy 34 apch end elev is 278.

HIRL Rwy 16-34  
REIL Rwy 16-34

5 NM Holding Pattern

GP 3.00°  
TCH 45

CATEGORY	A	B	C	D
LPV DA	611-7/8	283		(300-7/8)
LNAV/VNAV DA	800-13/8	472		(500-13/8)
LNAV MDA	800-1	472 (500-1)	800-13/8	472 (500-13/8)
CIRCLING	880-1	550 (600-1)	880-1 1/2	940-2
			550 (600-1 1/2)	610 (700-2)

FORT JOHNSON, LOUISIANA  
Amdt 3 15MAY25

31° 03' N-93° 11' W

MAKS AAF (KPOE)

# RNAV (GPS) RWY 16

SC-4, 15 MAY 2025 to 12 JUN 2025

SC-4, 15 MAY 2025 to 12 JUN 2025