


WAAS CH 61302 W18A	APP CRS 177°	Rwy Idg 5510 TDZE 8 Apt Elev 8
---------------------------------	------------------------	---

RNAV (GPS) RWY 18R LAKEFRONT (NEW)

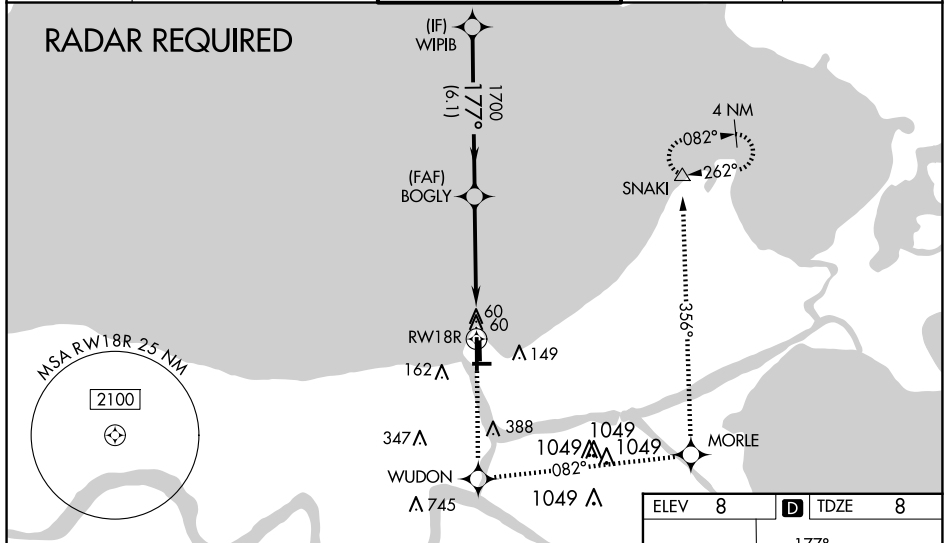
⚠ Inoperative table does not apply to LPV all Cats. For inoperative MALSR, increase LNAV Cat A and B visibility to 1 mile. Baro-VNAV NA when using Louis Armstrong New Orleans Intl altimeter setting. For uncompensated Baro-VNAV systems, LNAV/VNAV NA below -1.5°C (5°F) or above 49°C (120°F). DME/DME RNP-0.3 NA. Visibility reduction by helicopters NA. When local altimeter setting not received; use Louis Armstrong New Orleans Intl altimeter setting and increase all DA 29 feet and all MDA 40 feet; increase LNAV/VNAV all Cats and LNAV and Circling Cat C and D visibility ¼ mile. VDP NA with Louis Armstrong New Orleans Intl altimeter setting. For inoperative MALSR when using Louis Armstrong New Orleans Intl altimeter setting, increase LNAV Cat A and B visibility to 1 mile.

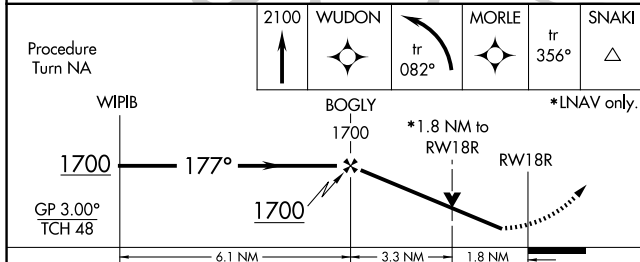
MALSR

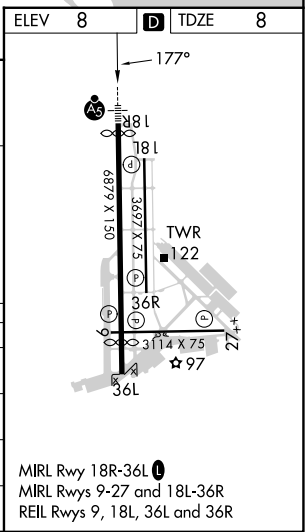


MISSED APPROACH:
Climb to 2100 direct WUDON and left turn on track 082° to MORLE and on track 356° to SNAKI and hold.

ATIS 124.9	NEW ORLEANS APP CON NORTH 133.15 290.3 SOUTH 123.85 256.9	LAKEFRONT TOWER * 118.95(CTAF) 0	GND CON 121.7 335.575	CLNC DEL 127.4
----------------------	---	---	---------------------------------	--------------------------



Procedure Turn NA	2100	WUDON	tr 082°	MORLE	tr 356°	SNAKI
	↑	✦	↪	✦	↪	△
						
*LNAV only.						
CATEGORY	A	B	C	D		
LPV DA	258-¾		250 (300-¾)			
LNAV/DA VNAV	521-1¼		513 (600-1¼)			
LNAV MDA	640-¾	632 (700-¾)	640-1¼	632 (700-1¼)	640-1½	632 (700-1½)
CIRCLING	640-1	632 (700-1)	700-2	692 (700-2)	820-2¾	812 (900-2¾)



SC-4, 15 MAY 2025 to 12 JUN 2025

SC-4, 15 MAY 2025 to 12 JUN 2025