

LOC/DME I-NEW 111.3 Chan 50	APP CRS 177°	Rwy Idg 5510 TDZE 8 Apt Elev 8
--	------------------------	---

ILS or LOC RWY 18R

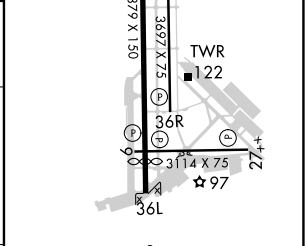
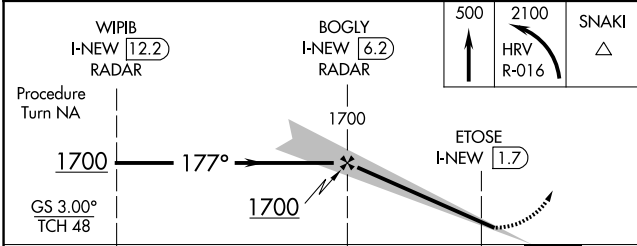
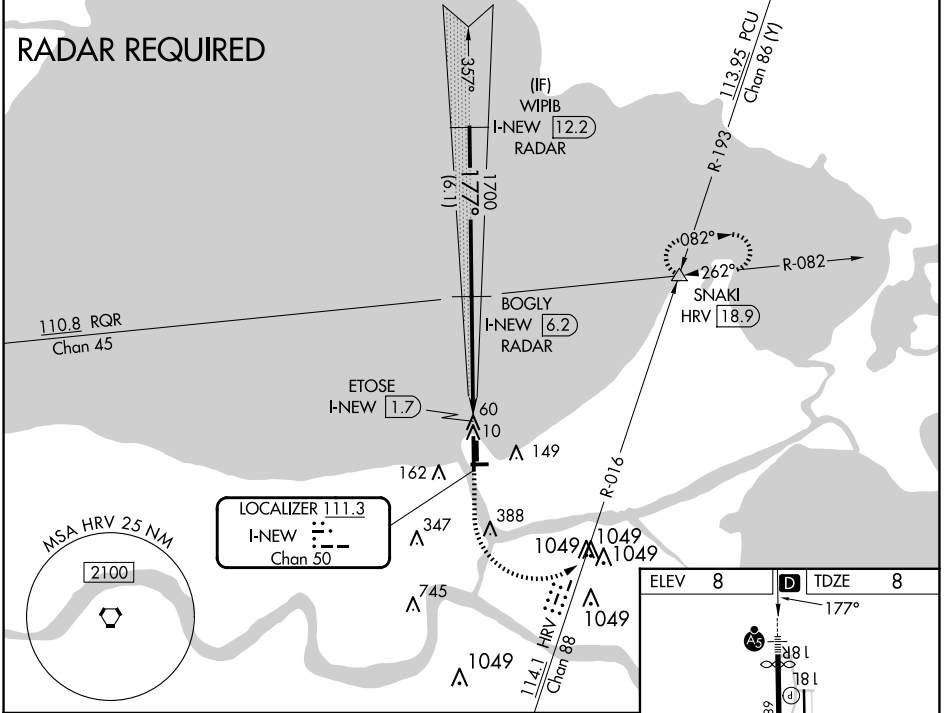
LAKEFRONT (NEW)

⚠ Inop table does not apply to S-ILS 18R. For inop MALSRS when using Louis Armstrong New Orleans Intl altimeter setting, increase S-LOC 18R Cats A-C visibility to 1 mile. For inop MALSRS, increase S-LOC 18R all Cats visibility to 1 mile. DME or RADAR required. Visibility reduction by helicopters NA. When local altimeter setting not received, use Louis Armstrong New Orleans Intl altimeter setting and increase all DA 29 feet and all MDA 40 feet; increase Circling Cat D visibility ¼ mile.



MISSED APPROACH: Climb to 500 then climbing left turn to 2100 on HRV VORTAC R-016 to SNAKI INT and hold.

ATIS 124.9	NEW ORLEANS APP CON NORTH 133.15 290.3 SOUTH 123.85 256.9	LAKEFRONT TOWER * 118.95 (CTAF) 0	GND CON 121.7 335.575	CLNC DEL 127.4
----------------------	---	---	---------------------------------	--------------------------



CATEGORY	A	B	C	D	MRL Rwy 18R-36L
S-ILS 18R		258-3/4	250 (300-3/4)		MRL Rwy 9-27 and 18L-36R
S-LOC 18R		320-3/4	312 (400-3/4)		REIL Rwy 9, 18L, 36L and 36R
					FAF to MAP 4.5 NM
CIRCLING	480-1 472 (500-1)	520-1 512 (600-1)	700-2 692 (700-2)	820-2 3/4 812 (900-2 3/4)	
	Knots 60	90	120	150	180
	Min:Sec 4:30	3:00	2:15	1:48	1:30

SC-4, 15 MAY 2025 to 12 JUN 2025

SC-4, 15 MAY 2025 to 12 JUN 2025