

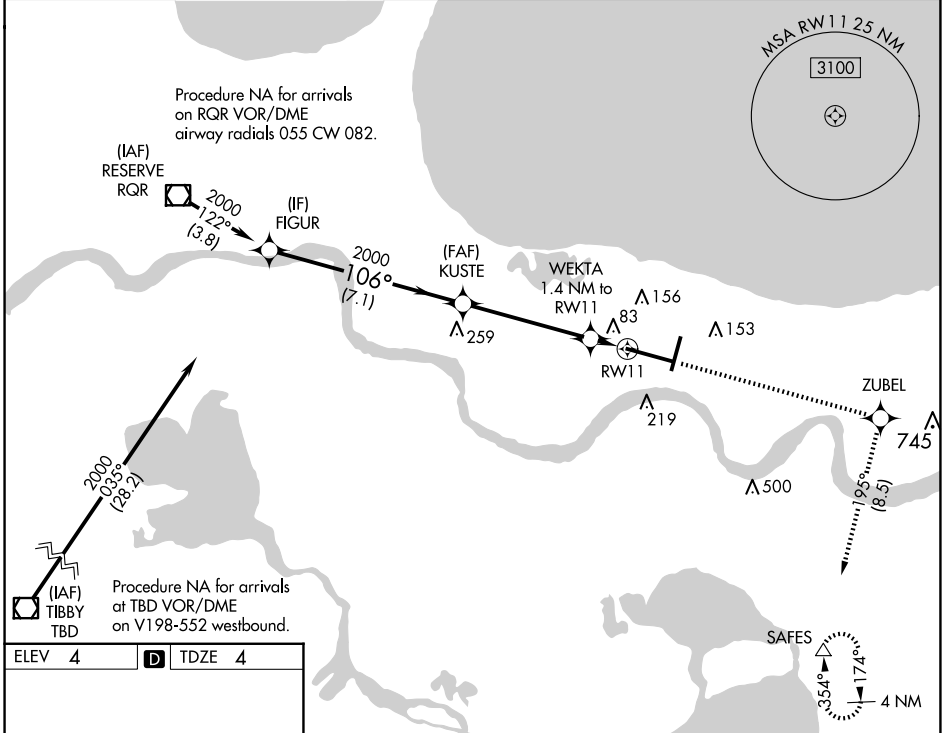
WAAS CH 61319 W11A	APP CRS 106°	Rwy Idg TDZE Apt Elev	9800 4 4
--	------------------------	-----------------------------	-------------------------------------

RNAV (GPS) Y RWY 11

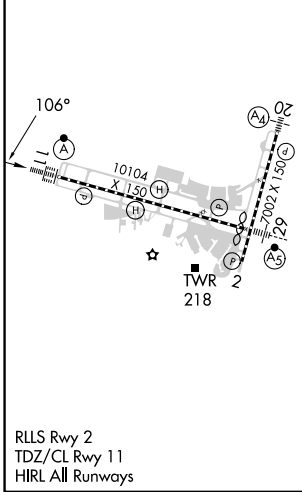
LOUIS ARMSTRONG NEW ORLEANS INTL (MSY)

RNP APCH - GPS.	ALSF-2	MISSED APPROACH: Climb to 2000 direct ZUBEL and on track 195° to SAFES and hold.
<p>▼ For uncompensated Baro-VNAV systems, LNAV/VNAV NA below -1°C or above 54°C. For inop ALSF-2, increase LNAV/VNAV all Cats visibility to RVR 4000.</p>		

D-ATIS 127.55	NEW ORLEANS APP CON WEST 125.5 350.35 EAST 133.15 290.3	NEW ORLEANS TOWER 119.5 254.3	GND CON 121.9 273.525	CLNC DEL 120.925	CPDLC
-------------------------	---	---	---------------------------------	----------------------------	-------



ELEV 4	D	TDZE 4
--------	----------	--------



VGSi and RNAV glidepath not coincident (VGSi Angle 2.80/TCH 73).			
FIGUR	KUSTE	ZUBEL	SAFES
2000	2000	tr 195°	△
<p>GP 3.00° TCH 55</p> <p>2000 — 106° — 2000</p>		<p>WEKTA 1.4 NM to RWY 11</p> <p>500</p> <p>RWY 11</p>	
7.1 NM		4.7 NM	
7.1 NM		1.4 NM	
CATEGORY	A	B	C
LPV DA	204/18 200 (200-½)		
LNAV/VNAV DA	254/24 250 (300-½)		
LNAV MDA	340/24	336 (400-½)	340/26 336 (400-½)
C CIRCLING	520-1	516 (600-1)	580-1½ 576 (600-1½) 600-2 596 (600-2)

SC-4, 15 MAY 2025 to 12 JUN 2025

SC-4, 15 MAY 2025 to 12 JUN 2025