

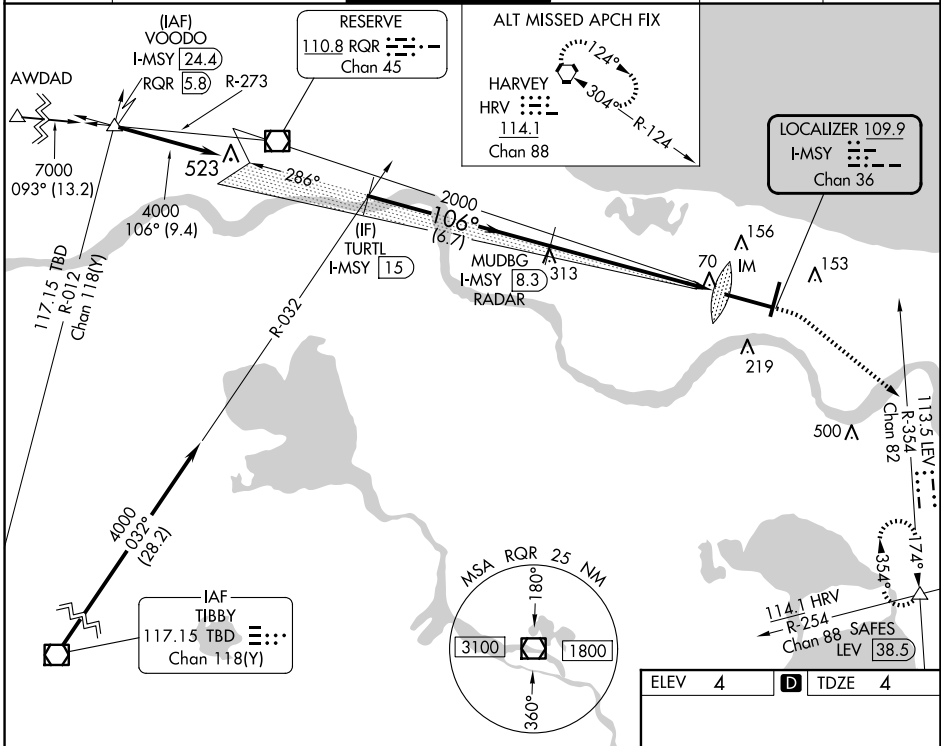
LOC/DME I-MSY 109.9 Chan 36	APP CRS 106°	Rwy Idg TDZE Apt Elev	9800 4 4
---	------------------------	-----------------------------	-------------------------------------

ILS RWY 11 (SA CAT I)

LOUIS ARMSTRONG NEW ORLEANS INTL (MSY)

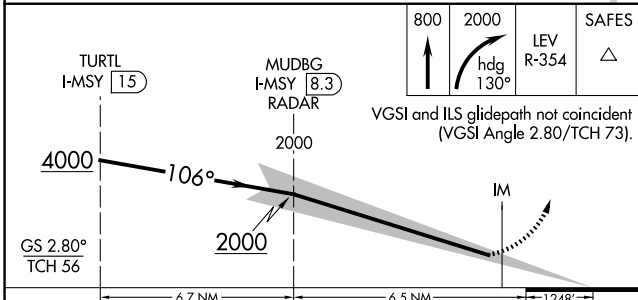
RADAR or DME required. Requires specific OPSPEC, MSPEC, or LOA approval and use of HUD to DH.		ALSF-2 	MISSED APPROACH: Climb to 800 then climbing right turn to 2000 on heading 130° and on LEV VORTAC R-354 to SAFES INT/LEV 38.5 DME and hold.
--	--	------------	--

D-ATIS 127.55	NEW ORLEANS APP CON WEST 125.5 350.35 EAST 133.15 290.3	NEW ORLEANS TOWER 119.5 254.3	GND CON 121.9 273.525	CLNC DEL 120.925	CPDLC
-------------------------	---	---	---------------------------------	----------------------------	-------

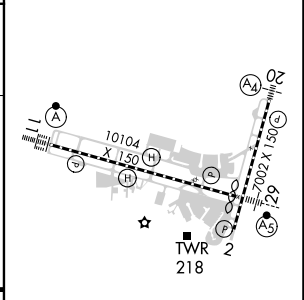


SC-4, 15 MAY 2025 to 12 JUN 2025

SC-4, 15 MAY 2025 to 12 JUN 2025



ELEV 4	TDZE 4
--------	--------



CATEGORY	A	B	C	D
S-ILS 11	RA 150/14 150 DA 154			
SA CATEGORY I ILS - SPECIAL AIRCREW & AIRCRAFT CERTIFICATION REQUIRED				

RLS Rwy 2
TDZ/CL Rwy 11
HRL All Runways