

| | | | |
|--|------------------------|---|-------------|
| WAAS CH 42909 W36A | APP CRS 359° | Rwy Idg TDZE 54 Apt Elev 55 | 5000 |
|--|------------------------|---|-------------|

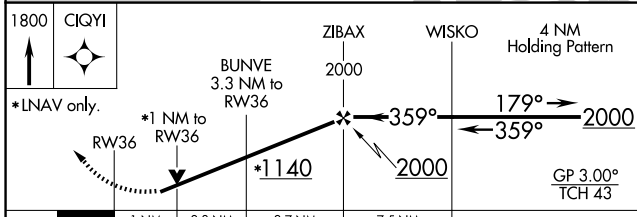
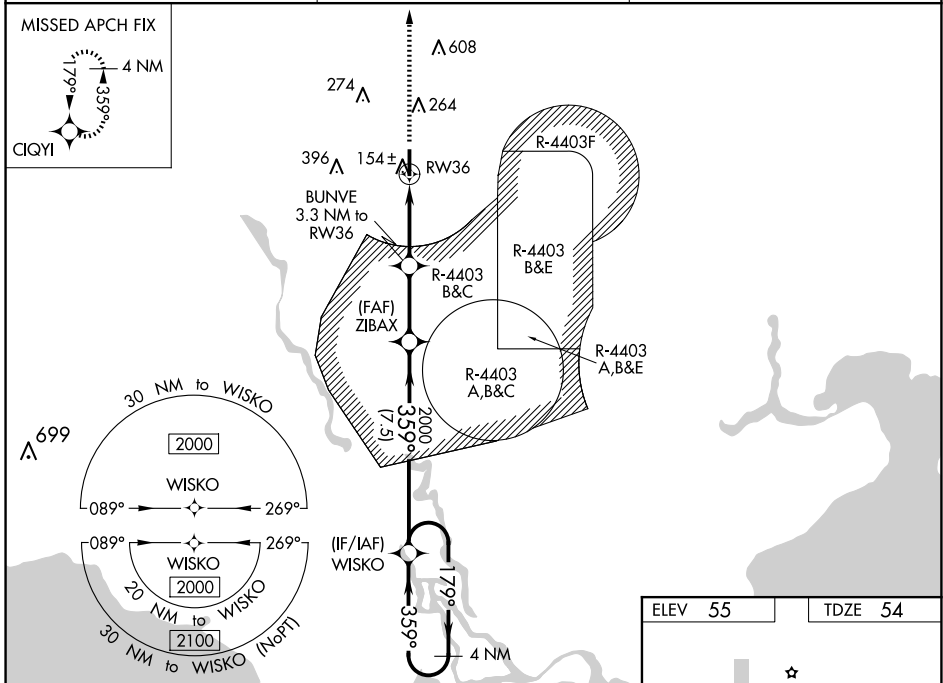
RNAV (GPS) RWY 36

PICAYUNE MUNI (MJD)

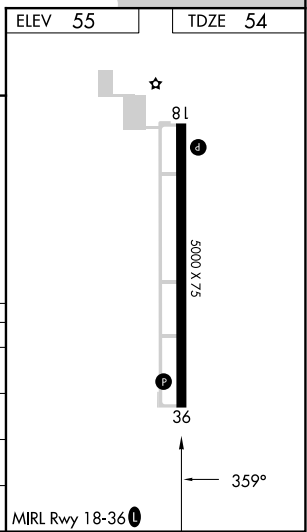
⚠ For uncompensated Baro-VNAV systems, LNAV/VNAV NA below -1.5°C (5°F) or above 54°C (130°F). Baro-VNAV and VDP NA when using Stennis Intl altimeter setting. DME/DME RNP-0.3 NA. Helicopter visibility reduction below 3/4 SM NA. Procedure NA when R-4403 A, B, C, or E is active. When local altimeter setting not received, use Stennis Intl altimeter setting; increase LPV DA to 338 and all Cats visibility 1/8 mile; increase LNAV/VNAV DA to 374 and all Cats visibility 1/8 mile; increase all MDA 40 feet and LNAV Cats C and D visibility 1/8 mile, and Circling Cat C visibility 1/4 mile.

MISSED APPROACH: Climb to 1800 direct CIQYI and hold.

| | | |
|----------------------------|--|-------------------------------|
| AWOS-3PT 119.075 | GULFPORT APP CON * 124.6 354.1 | UNICOM 122.8 (CTAF) |
|----------------------------|--|-------------------------------|



| CATEGORY | A | B | C | D |
|-----------------|----------------------|----------------------|------------------------------|-----------------------|
| LPV DA | | 304-7/8 | 250 (300-7/8) | |
| LNAV/VNAV DA | | 340-1 | 286 (300-1) | |
| LNAV MDA | | 420-1 | 366 (400-1) | |
| CIRCLING | 480-1 425 (500-1) | 580-1 525 (600-1) | 700-1 3/4 645 (700-1 3/4) | 960-3 905 (1000-3) |



SC-4, 15 MAY 2025 to 12 JUN 2025

SC-4, 15 MAY 2025 to 12 JUN 2025