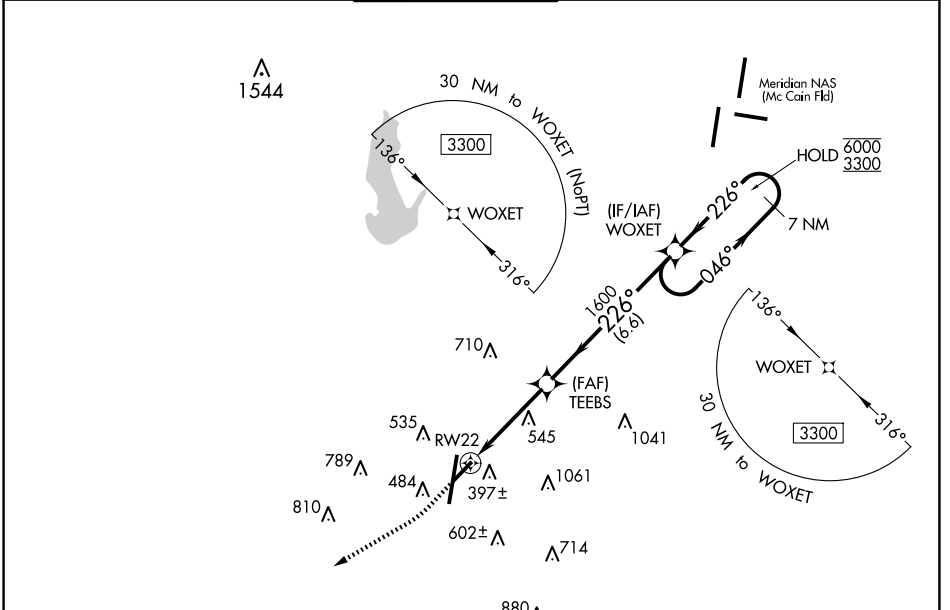


WAAS CH <b>48833</b> <b>W22A</b>	APP CRS <b>226°</b>	Rwy Idg TDZE <b>298</b> Apt Elev <b>298</b>
--	------------------------	---

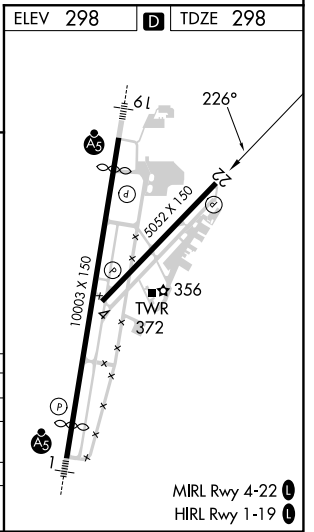
# RNAV (GPS) RWY 22

KEY FLD (MEI)

RNP APCH - GPS.				MISSED APPROACH: Climb to 1000 then climbing right turn to 3000 direct PAULD and hold.	
▼ Rwy 22 helicopter visibility reduction below 3/4 SM NA. ▲ For uncompensated Baro-VNAV systems, LNAV/VNAV NA below -7°C or above 54°C. ▲ Circling NA east of Rwy 1 and southeast of Rwy 22.					
ATIS <b>126.475 291.675</b>	MERIDIAN APP CON ★ <b>120.5 269.325</b>	KEY TOWER ★ <b>133.975 (CTAF) 0 257.8</b>	GND CON <b>121.9 348.6</b>	CLNC DEL <b>121.9 348.6</b>	UNICOM <b>122.95</b>



ELEV 298		D TDZE 298	
1000	3000	PAULD	
TEEBES		WOXET 7 NM Holding Pattern	
1.8 NM to RWY 22		046° → 6000	
1600		← 226° 3300	
GP 3.00°		TCH 52	
1.8 NM		2.1 NM	
A		B	
C		D	
CATEGORY	A	B	C
LPV DA	592-7/8	294 (300-7/8)	
LNAV/VNAV DA	825-1 1/2	527 (600-1 1/2)	
LNAV MDA	920-1	622 (700-1)	920-3/4 622 (700-1 3/4)
CIRCLING	920-1	622 (700-1)	960-1 3/4 1120-2 3/4 662 (700-1 3/4) 822 (900-2 3/4)



SC-4, 15 MAY 2025 to 12 JUN 2025

SC-4, 15 MAY 2025 to 12 JUN 2025