

APP CRS	Rwy Idg	3903
177°	TDZE	413
	Apt Elev	413

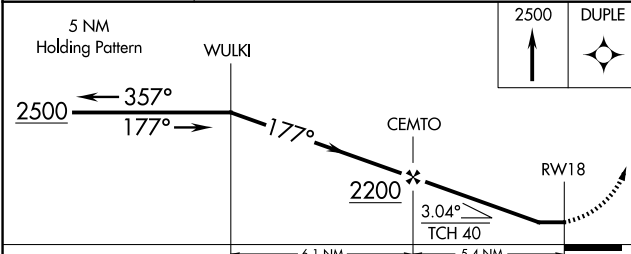
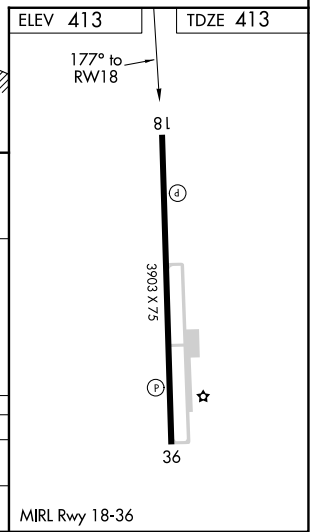
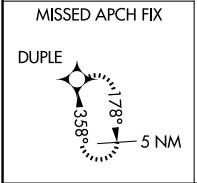
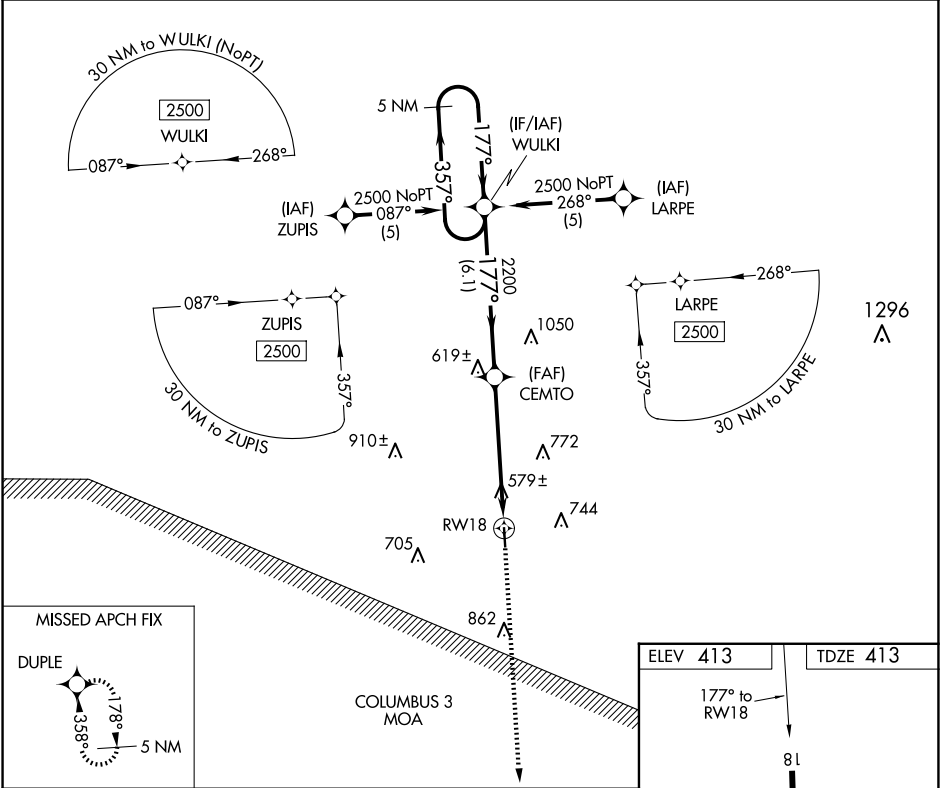
RNAV (GPS) RWY 18

NEW ALBANY/UNION COUNTY (M72)

▽ Use Tupelo altimeter setting, if not received, use Oxford altimeter setting and increase all MDA 20 feet and visibility Circling Cat C ¼ SM. Procedure NA at night. DME/DME RNP-0.3 NA. Visibility reduction by helicopters NA.

▲ NA MISSED APPROACH: Climb to 2500 direct DUPLÉ and hold.

TUP ASOS 133.525	MEMPHIS CENTER 135.9 273.55	UNICOM 122.8 (CTAF)
----------------------------	---------------------------------------	-------------------------------



CATEGORY	A	B	C	D
RNAV MDA	900-1	487 (500-1)	900-1¼ 487 (500-1¼)	NA
CIRCLING	940-1	527 (600-1)	1140-2 727 (800-2)	NA

SC-4, 15 MAY 2025 to 12 JUN 2025

SC-4, 15 MAY 2025 to 12 JUN 2025