

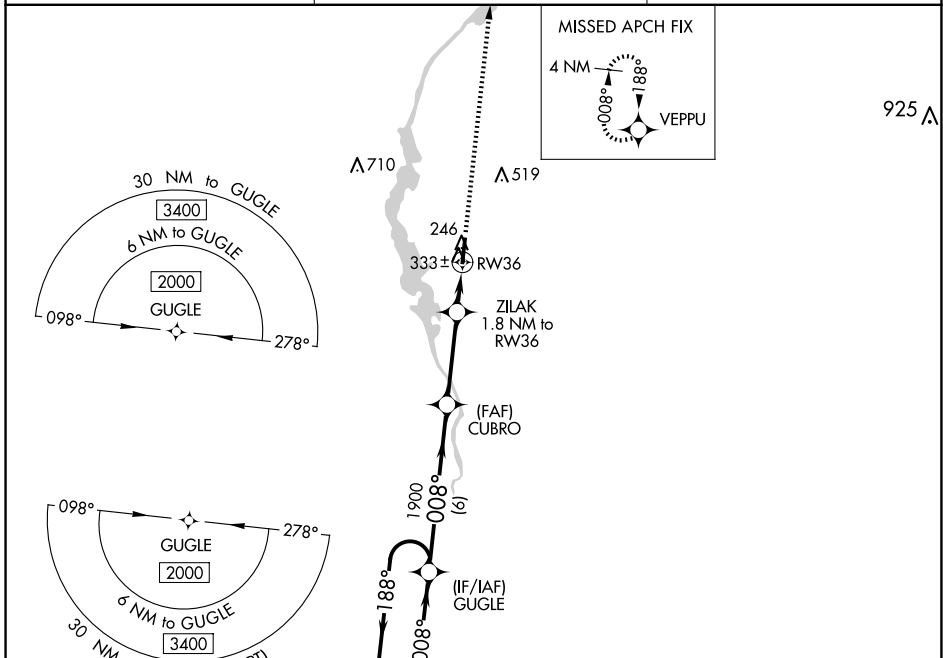
WAAS CH <b>70414</b> <b>W36A</b>	APP CRS <b>008°</b>	Rwy Idg TDZE <b>226</b> Apt Elev <b>226</b>	<b>4999</b>
--	------------------------	---	-------------

# RNAV (GPS) RWY 36

MONROE COUNTY (M40)

RNP APCH.  
 For uncompensated Baro-VNAV systems, LNAV/VNAV NA below -15°C or above 54°C. Rwy 36 helicopter visibility reduction below 3/4 SM NA.  
 MISSED APPROACH: Climb to 2000 direct VEPPU and hold.

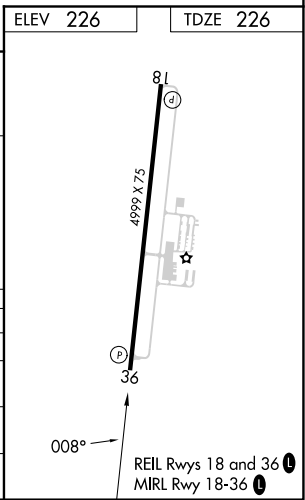
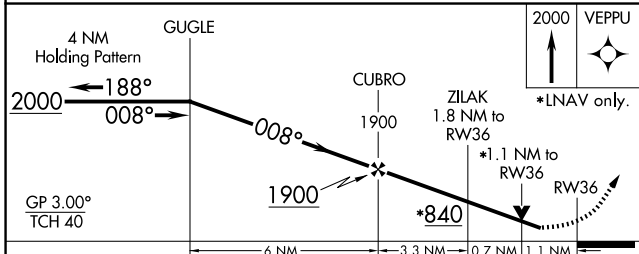
AWOS-3P <b>118.475</b>	COLUMBUS APP CON * <b>126.075 239.25</b>	UNICOM <b>122.8 (CTAF) 0</b>
---------------------------	---	---------------------------------



SC-4, 15 MAY 2025 to 12 JUN 2025

SC-4, 15 MAY 2025 to 12 JUN 2025

ELEV 226	TDZE 226
----------	----------



CATEGORY	A	B	C	D
LPV DA		506-7/8	280 (300-7/8)	
LNAV/VNAV DA		624-11/8	398 (400-11/8)	
LNAV MDA		600-1	374 (400-1)	
<b>C</b> CIRCLING	660-1 434 (500-1)	680-1 454 (500-1)	820-11/2 594 (600-11/2)	860-2 634 (700-2)