

WAAS CH 61013 W30A	APP CRS 304°	Rwy Idg 4999
		TDZE 9
		Apt Elev 9

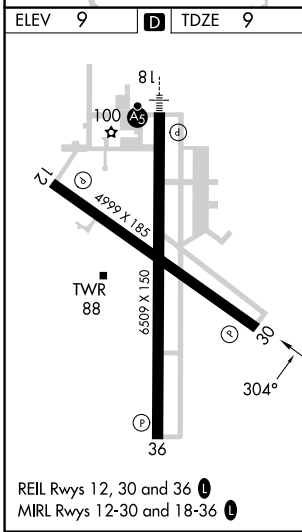
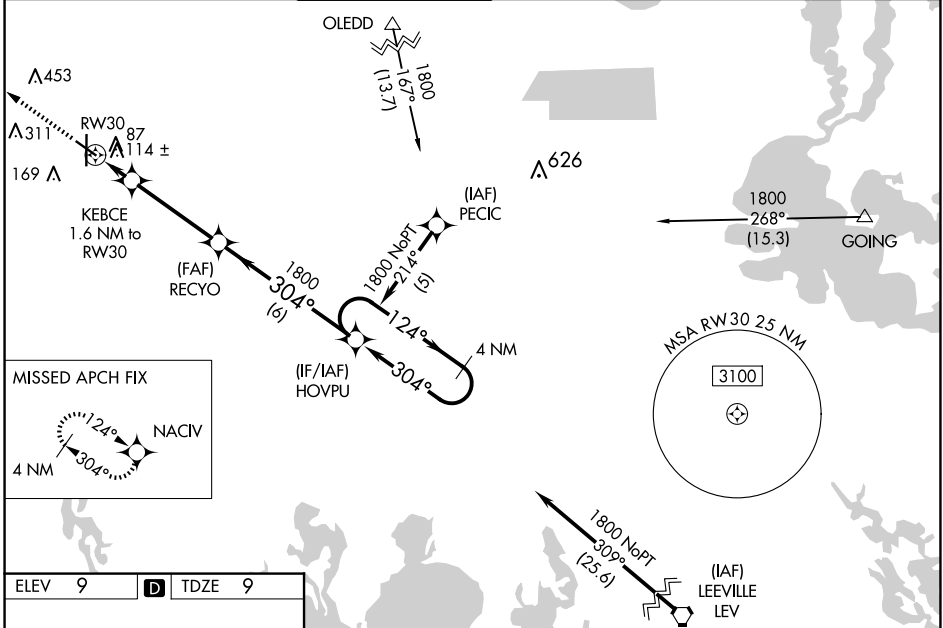
RNAV (GPS) RWY 30

HOUMA-TERREBONNE (HUM)

⚠ For uncompensated Baro-VNAV systems, LNAV/VNAV NA below -15°C (5°F) or above 49°C (120°F). DME/DME RNP-0.3 NA. Visibility reduction by helicopters NA.
⚠ When local altimeter setting not received, use Louis Armstrong New Orleans Intl altimeter setting: increase LPV DA to 336, LNAV/VNAV DA to 489, and all visibilities ¼ SM; increase all MDAs 80 feet and visibility Cats C and D ¾ SM. Baro-VNAV NA when using Louis Armstrong New Orleans Intl altimeter setting.

MISSED APPROACH: Climb to 1800 direct NACIV and hold.

ATIS 120.25	NEW ORLEANS APP CON 118.9 350.35	HOUMA TOWER ★ 125.3 (CTAF) 0 346.3	GND CON 123.875	CLNC DEL 118.9 (When twr closed)	UNICOM 122.95
-----------------------	--	--	---------------------------	---	-------------------------



ELEV 9	D	TDZE 9		
1800	NACIV	VGSI and RNAV glidepath not coincident (VGSI Angle 3.00°/TCH 39).	4 NM Holding Pattern	
* LNAV only	KEBCE 1.6 NM to RWY 30	RECYO	HOVPU	
	RWY 30	304°	124°	
	560*	1800	1800	
	1.6 NM	3.8 NM	6 NM	
GP 3.00°			TCH 45	
CATEGORY	A	B	C	D
LPV DA		259-¾	250 (300-¾)	
LNAV/VNAV DA		412-1⅛	403 (500-1⅛)	
LNAV MDA		380-1	371 (400-1)	
C CIRCLING	480-1	471 (500-1)	760-2¼ 751 (800-2¼)	760-2½ 751 (800-2½)

SC-4, 15 MAY 2025 to 12 JUN 2025

SC-4, 15 MAY 2025 to 12 JUN 2025