

HOUMA, LOUISIANA

AL-5037 (FAA)

24361

LOC I-HUM	APP CRS	Rwy Idg	6413
108.5	179°	TDZE	8
		Apt Elev	9

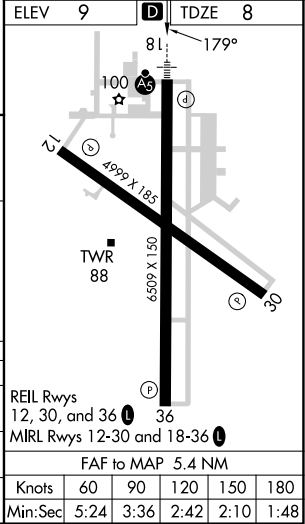
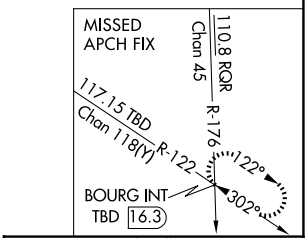
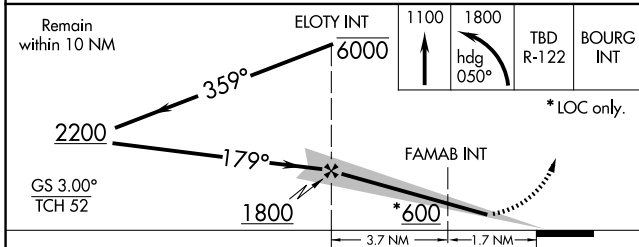
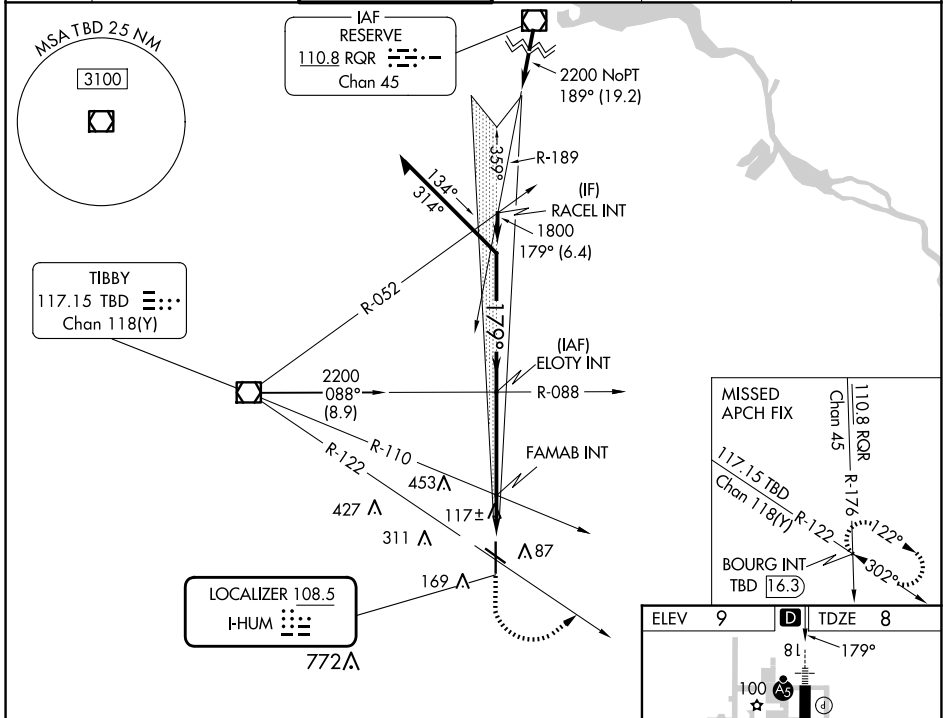
ILS or LOC RWY 18

HOUMA-TERREBONNE (HUM)

⚠ When local altimeter setting not received, use Louis Armstrong New Orleans Intl altimeter setting: increase DA to 285 feet; increase all MDA 80 feet and S-LOC 18 Cat C/D visibility $\frac{1}{4}$ SM and Circling Cat C/D visibility $\frac{1}{4}$ SM. For inop ALS increase S-LOC 18 Cat C/D visibility to 1 SM. For inop ALS when using Louis Armstrong New Orleans Intl altimeter setting increase S-ILS 18 all Cats visibility $\frac{7}{8}$ SM.

MALSRL
 MISSED APPROACH: Climb to 1100 then climbing left turn to 1800 on heading 050° and TBD VOR/DME R-122 to BOURG INT/TBD 16.3 DME and hold.

ATIS 120.25	NEW ORLEANS APP CON 118.9 350.35	HOUMA TOWER ★ 125.3 (CTAF) 346.3	GND CON 123.875	CLNC DEL 118.9 <small>(When twr closed)</small>	UNICOM 122.95
-----------------------	--	--	---------------------------	--	-------------------------



CATEGORY	A	B	C	D
S-ILS 18	208- $\frac{1}{2}$		200 (200- $\frac{1}{2}$)	
S-LOC 18	380- $\frac{1}{2}$	372 (400- $\frac{1}{2}$)	380- $\frac{5}{8}$	372 (400- $\frac{5}{8}$)
C CIRCLING	480-1	471 (500-1)	760-2 $\frac{1}{4}$ 751 (800-2 $\frac{1}{4}$)	760-2 $\frac{1}{2}$ 751 (800-2 $\frac{1}{2}$)

REIL Rwy	12, 30, and 36	36			
MRL Rwy	12-30 and 18-36				
FAF to MAP 5.4 NM					
Knots	60	90	120	150	180
Min:Sec	5:24	3:36	2:42	2:10	1:48

HOUMA, LOUISIANA
Amdt 5 27APR17

29°34'N-90°40'W

HOUMA-TERREBONNE (HUM)

ILS or LOC RWY 18

SC-4, 15 MAY 2025 to 12 JUN 2025

SC-4, 15 MAY 2025 to 12 JUN 2025