

LOC I-JHF <b>111.7</b>	APP CRS <b>159°</b>	Rwy Idg <b>5387</b>
		TDZE <b>341</b>
		Apt Elev <b>341</b>

# ILS or LOC RWY 16

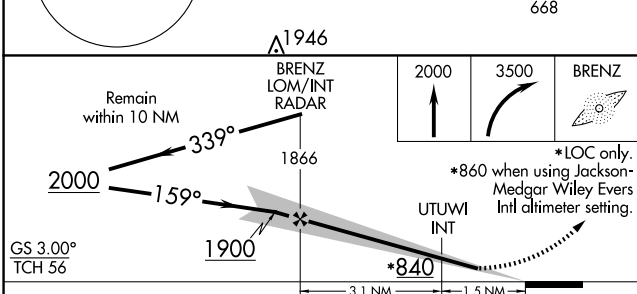
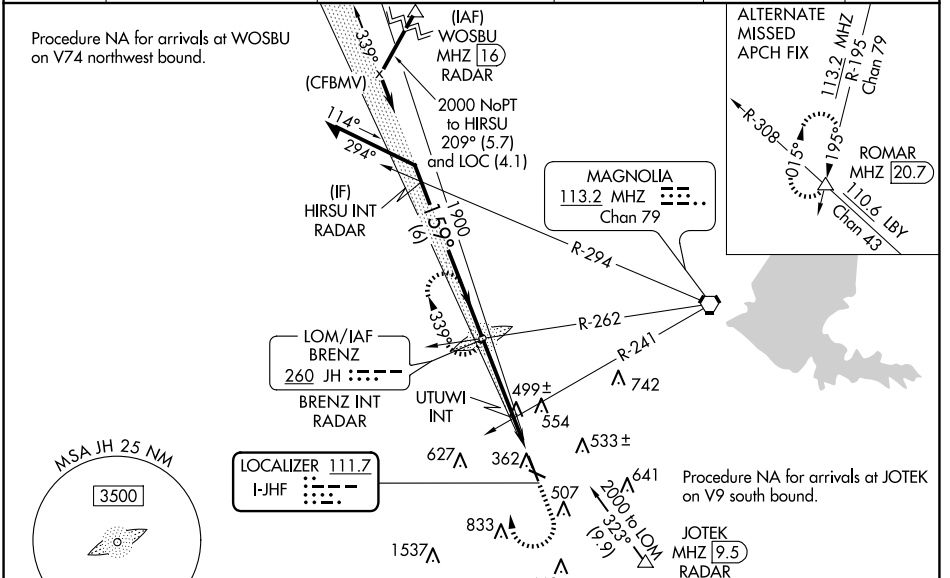
HAWKINS FLD (HKS)

⚠ When local altimeter setting not received, use Jackson-Medgar Wiley Evers Intl altimeter setting, increase all DA 19 feet and all MDA 20 feet, increase Circling Cat C visibility 1/4 mile and UTUWI fix Circling Cat C visibility 1/4 mile. For inop MALSRL, increase S-LOC 16 Cats C/D visibility 3/8, increase UTUWI fix S-LOC 16 Cats C/D visibility 3/8. For inop MALSRL when using Jackson-Medgar Wiley Evers Intl altimeter setting increase S-LOC Cats C/D visibility 3/8. Glideslope unusable when control tower closed, only localizer minimums authorized during this period. ADF required.

MALSRL

MISSED APPROACH: Climb to 2000 then climbing right turn to 3500 direct BRENZ LOM and hold.

ASOS <b>120.625</b>	JACKSON APP CON * <b>123.9 319.2</b>	HAWKINS TOWER * <b>119.65 (CTAF) 257.8</b>	GND CON <b>121.9 239.0</b>	CLNC DEL <b>121.9</b> (When twr closed)	UNICOM <b>122.95</b>
------------------------	---	---	-------------------------------	---	-------------------------



ELEV 341	TDZE 341
----------	----------

159° 4.6 NM from FAF

TWR 397

5387 X 150

0.3% UP -0.7% UP

3431 X 150

376

REIL Rwy 34 1

HIRL Rwy 16-34 1

MIRL Rwy 11-29

FAF to MAP 4.6 NM

Knots	60	90	120	150	180
Min:Sec	4:36	3:04	2:18	1:50	1:32

CATEGORY	A	B	C	D
S-ILS 16		541-1/2	200 (200-1/2)	
S-LOC 16	840-1/2	499 (500-1/2)	840-1	499 (500-1)
<b>C</b> CIRCLING	860-1 519 (600-1)	880-1 539 (600-1)	1140-2 1/4 799 (800-2 1/4)	1320-3 979 (1000-3)
UTUWI FIX MINIMUMS (DUAL VOR RECEIVERS REQUIRED)				
S-LOC 16	760-1/2	419 (500-1/2)	760-3/4	419 (500-3/4)
<b>C</b> CIRCLING	860-1 519 (600-1)	880-1 539 (600-1)	1140-2 1/4 799 (800-2 1/4)	1320-3 979 (1000-3)

SC-4, 15 MAY 2025 to 12 JUN 2025

SC-4, 15 MAY 2025 to 12 JUN 2025