

WAAS CH <b>77734</b> <b>W36A</b>	APP CRS <b>001°</b>	Rwy Idg TDZE Apt Elev	<b>5000</b> <b>272</b> <b>272</b>
--	------------------------	-----------------------------	---

# RNAV (GPS) RWY 36

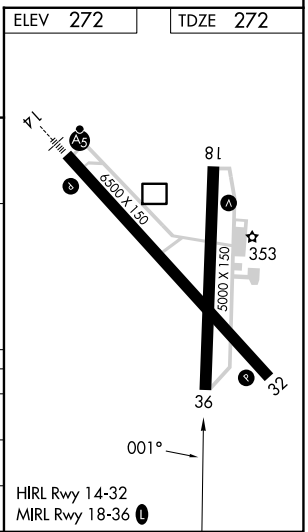
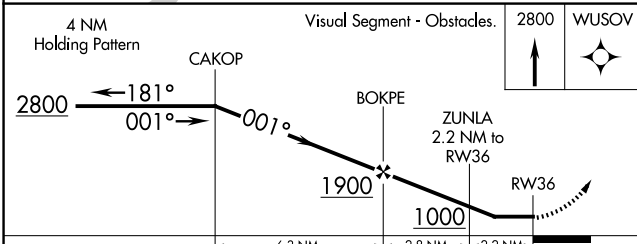
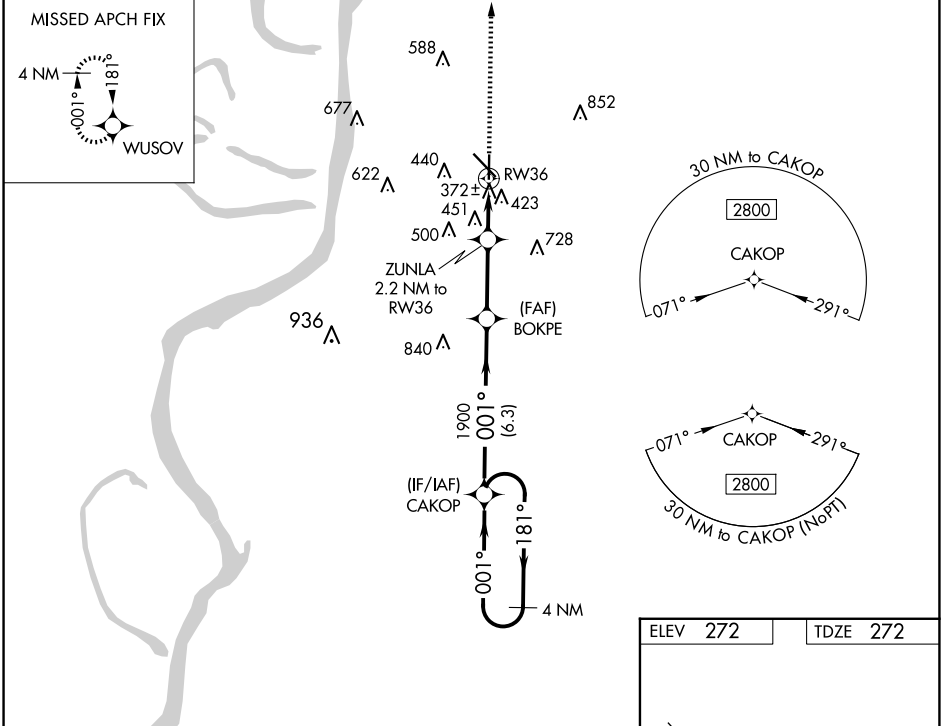
HARDY-ANDERS FLD/NATCHEZ-ADAMS COUNTY (HE/Z)

RNP APCH

▼ When local altimeter setting not received, use Vicksburg Tallulah Rgnl altimeter setting and increase all MDAs 140 feet; increase LP and LNAV Cats C/D visibility  $\frac{3}{8}$  SM.  
 ▲ Increase Circling Cats C visibility  $\frac{1}{2}$  SM. Rwy 36 helicopter visibility reduction below 1 SM NA. Straight-in Rwy 36 NA at night, Circling Rwy 36 NA at night.

MISSED APPROACH: Climb to 2800 direct WUSOV and hold.

AWOS-3PT <b>124.675</b>	HOUSTON CENTER <b>120.975 299.6</b>	UNICOM <b>122.8 (CTAF) 0</b>
----------------------------	--	---------------------------------



CATEGORY	A	B	C	D
LP MDA	660-1	388 (400-1)	660-1 $\frac{1}{8}$	388 (400-1 $\frac{1}{8}$ )
LNAV MDA	720-1	448 (500-1)	720-1 $\frac{3}{8}$	448 (500-1 $\frac{3}{8}$ )
CIRCLING	740-1 468 (500-1)	820-1 548 (600-1)	1020-2 $\frac{1}{4}$ 748 (800-2 $\frac{1}{4}$ )	1220-3 948 (1000-3)

HIRL Rwy 14-32  
MIRL Rwy 18-36 0

SC-4, 15 MAY 2025 to 12 JUN 2025

SC-4, 15 MAY 2025 to 12 JUN 2025