

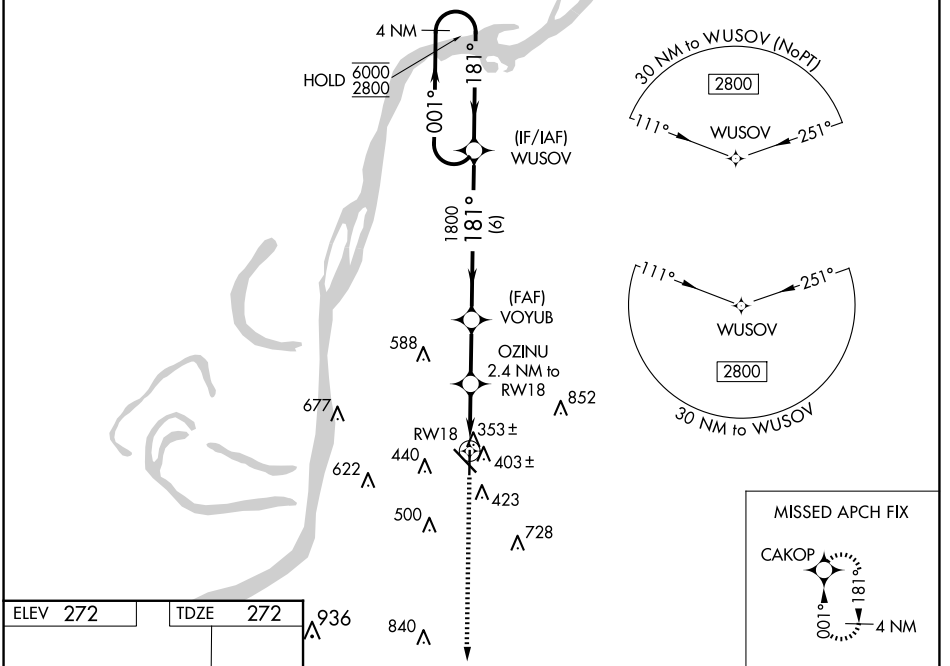
WAAS CH <b>45734</b> <b>W18A</b>	APP CRS <b>181°</b>	Rwy ldg <b>5000</b> TDZE <b>272</b> Apt Elev <b>272</b>
--	------------------------	---

# RNAV (GPS) RWY 18

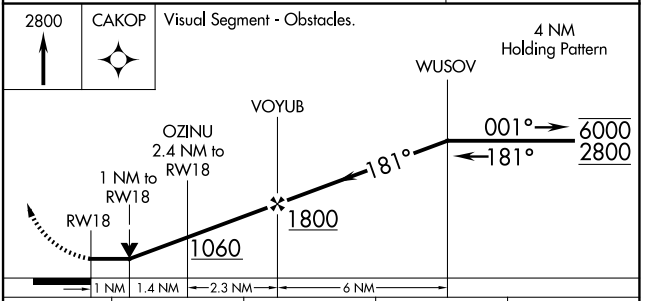
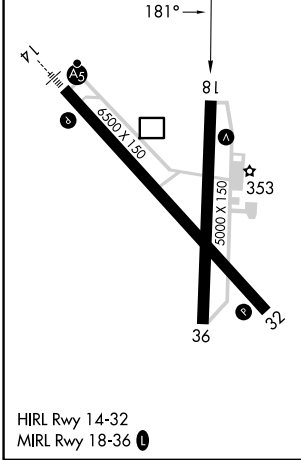
HARDY-ANDERS FLD/NATCHEZ-ADAMS COUNTY (H/E/Z)

RNP APCH.	MISSED APPROACH: Climb to 2800 direct CAKOP and hold.
<p>Circling Rwy 36 NA at night. Rwy 18 helicopter visibility reduction below 3/4 SM NA.</p>	

AWOS-3PT <b>124.675</b>	HOUSTON CENTER <b>120.975 299.6</b>	UNICOM <b>122.8 (CTAF) 0</b>
----------------------------	--	---------------------------------



ELEV 272	TDZE 272
----------	----------



CATEGORY	A	B	C	D
LP MDA	620-1 348 (400-1)			
LNAV MDA	660-1	388 (400-1)	660-1 1/8	388 (400-1 1/8)
CIRCLING	740-1 468 (500-1)	820-1 548 (600-1)	1020-2 1/4 748 (800-2 1/4)	1220-3 948 (1000-3)

# RNAV (GPS) RWY 18

SC-4, 15 MAY 2025 to 12 JUN 2025

SC-4, 15 MAY 2025 to 12 JUN 2025