

|  |                        |                             |                                       |
|--|------------------------|-----------------------------|---------------------------------------|
| WAAS<br>CH <b>42718</b><br><b>W36A</b> | APP CRS<br><b>360°</b> | Rwy ldg<br>TDZE<br>Apt Elev | <b>5001</b><br><b>42</b><br><b>46</b> |
|--|------------------------|-----------------------------|---------------------------------------|

# RNAV (GPS) RWY 36

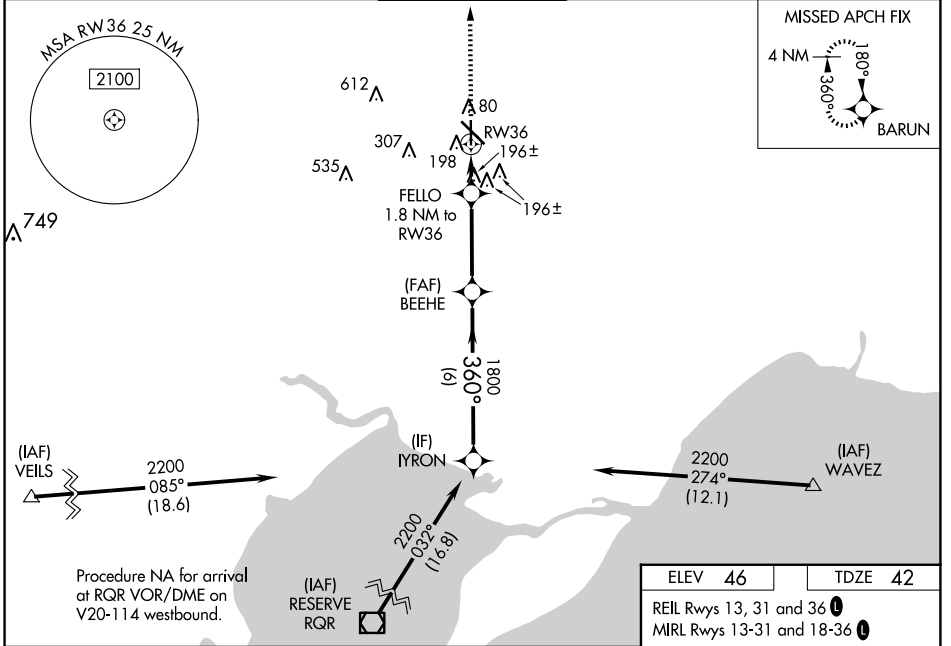
HAMMOND NORTHSORE RGNL (HDC)

RNP APCH - GPS.

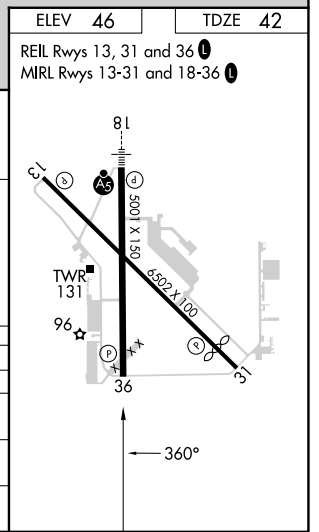
**⚠** Baro-VNAV and VDP NA when using Louis Armstrong New Orleans Intl altimeter setting.  
**⚠** Rwy 36 helicopter visibility reduction below 3/4 SM NA. For uncompensated Baro-VNAV systems, LNAV/VNAV NA below -15°C or above 54°C. When local altimeter setting not received, use Louis Armstrong New Orleans Intl altimeter setting and increase LPV DA to 374 feet and all visibilities 1/4 SM; increase LNAV/VNAV DA to 528 feet and all visibilities 1/4 SM; increase all MDAs 100 feet and LNAV visibility Cat C/D 1/4 SM, and Circling visibility Cat C/D 1/2 SM.

MISSED APPROACH:  
Climb to 1800 direct BARUN and hold.

|                        |  |   |                          |   |
|------------------------|--|---|--------------------------|---|
| ATIS<br><b>118.325</b> | NEW ORLEANS APP CON<br><b>119.3 350.35</b> | HAMMOND TOWER ★<br><b>120.575</b> (CTAF) <b>0</b> | GND CON<br><b>119.85</b> | CLNC DEL<br><b>119.3</b><br>(When twr closed) |
|------------------------|--|---|--------------------------|---|



|                   |           |             |                              |                              |
|-------------------|-----------|-------------|------------------------------|------------------------------|
|                   | IRON      | BEEHE       | FELLO                        | RW36                         |
|                   | 2200      | 1800        | 1800                         | 1800                         |
|                   | 360°      | 1800        | 1.2 NM to RW36               |                              |
|                   | GP 3.00°  |             | 660                          |                              |
|                   | TCH 52    |             |                              |                              |
|                   | 6 NM      | 3.5 NM      | 0.6 NM                       | 1.2 NM                       |
| CATEGORY          | A         | B           | C                            | D                            |
| LPV DA            | 292-3/4   |             | 250 (300-3/4)                |                              |
| LNAV/VNAV DA      | 446-1 1/8 |             | 404 (400-1 1/8)              |                              |
| LNAV MDA          | 460-1     | 418 (500-1) | 460-1 1/8                    | 418 (500-1 1/8)              |
| <b>C</b> CIRCLING | 500-1     | 454 (500-1) | 620-1 1/2<br>574 (600-1 1/2) | 920-2 3/4<br>874 (900-2 3/4) |



SC-4, 15 MAY 2025 to 12 JUN 2025

SC-4, 15 MAY 2025 to 12 JUN 2025