


WAAS CH <b>45818</b> <b>W18A</b>	APP CRS <b>180°</b>	Rwy ldg TDZE Apt Elev	<b>5001</b> <b>44</b> <b>46</b>
--	------------------------	-----------------------------	---------------------------------------

# RNAV (GPS) RWY 18

HAMMOND NORTHSHORE RGNL (HDC)

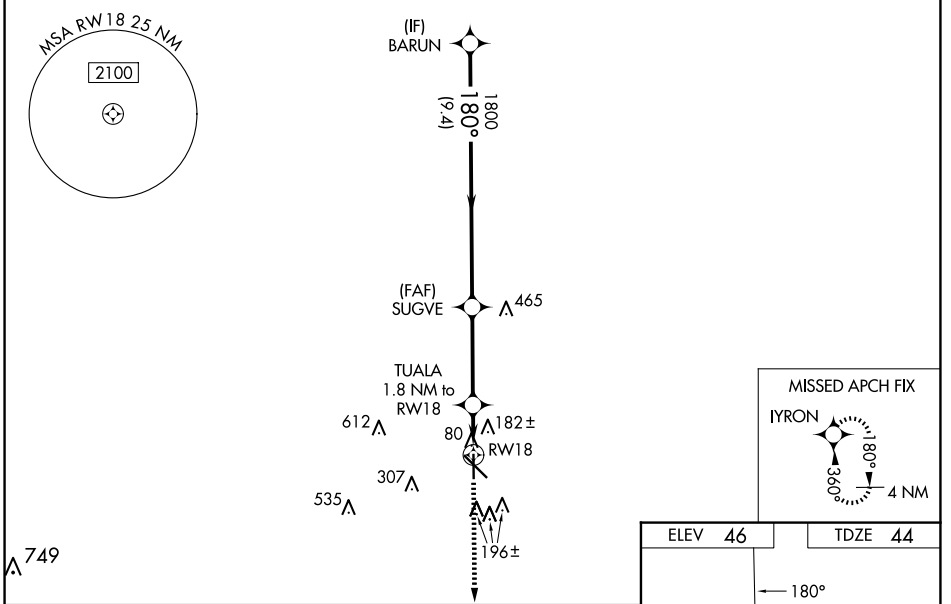
RNP APCH - GPS.


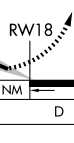

**⚠** Baro-VNAV and VDP NA when using Louis Armstrong New Orleans Intl altimeter setting. For uncompensated Baro-VNAV systems, LNAV/VNAV NA below -15°C or above 54°C. When local altimeter setting not received, use Louis Armstrong New Orleans Intl altimeter setting and increase LPV DA to 339 feet; increase LNAV/VNAV DA to 555 feet and all visibilities ¼ SM. Increase all MDAs 100 feet and LNAV visibility Cat C/D ½ SM, and Circling visibility Cat C/D ½ SM. For inop ALS when using Louis Armstrong New Orleans Intl altimeter increase LPV all Cats visibility to ¾ SM; LNAV/VNAV all Cats visibility to 1¾ SM and LNAV Cats C/D visibility to 1¾ SM. For inop ALS increase LNAV/VNAV all Cats visibility to 1¼ SM and LNAV Cat C/D visibility to 1¼ SM.

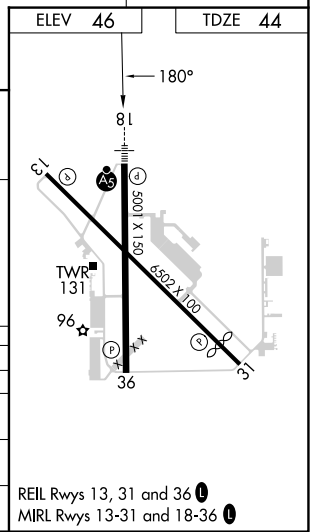
MALSRS 

MISSED APPROACH: Climb to 2200 direct IYRON and hold.

ATIS <b>118.325</b>	NEW ORLEANS APP CON <b>119.3 350.35</b>	HAMMOND TOWER ★ <b>120.575</b> (CTAF) 	GND CON <b>119.85</b>	CLNC DEL <b>119.3</b> (When twr closed)
------------------------	--	--	--------------------------	---



GP 3.00° TCH 52	BARUN		SUGVE		TUALA 1.8 NM to RW18		2200	IYRON
	1800		1800		660		↑	
9.4 NM		3.5 NM		0.7 NM		1.1 NM		
CATEGORY	A	B	C		D			
LPV DA	250-½		206 (300-½)					
LNAV/VNAV DA	466-¾		422 (500-¾)					
LNAV MDA	460-½	416 (500-½)	460-¾	416 (500-¾)				
 CIRCLING	500-1	454 (500-1)	620-1½	574 (600-1½)		920-2¾	874 (900-2¾)	



SC-4, 15 MAY 2025 to 12 JUN 2025

SC-4, 15 MAY 2025 to 12 JUN 2025