

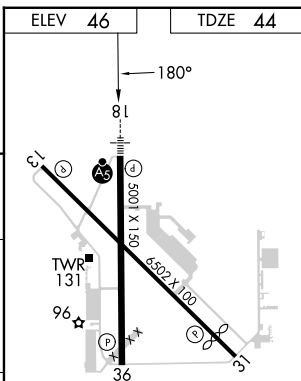
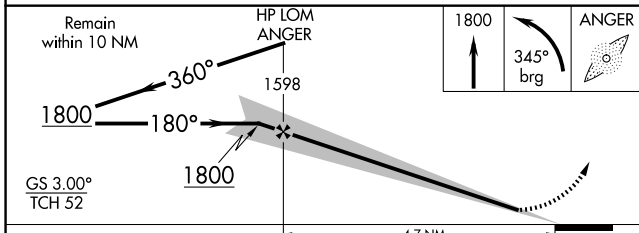
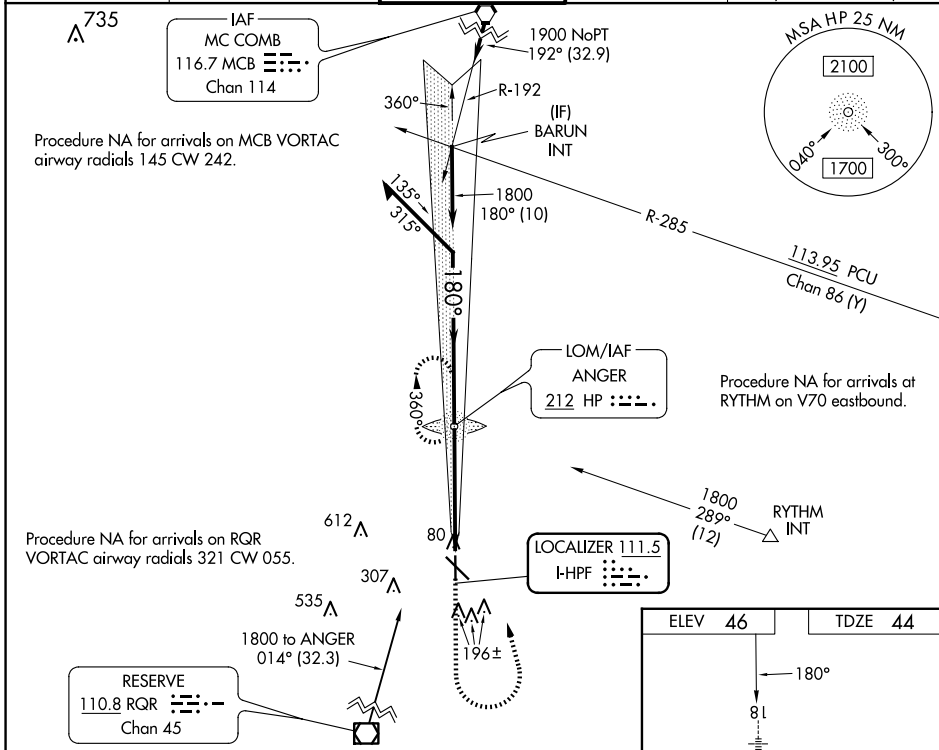
LOC I-HPF <b>111.5</b>	APP CRS <b>180°</b>	Rwy Idg <b>5001</b> TDZE <b>44</b> Apt Elev <b>46</b>
---------------------------	------------------------	---

# ILS or LOC RWY 18

HAMMOND NORTHSORE RGNL (HDC)

ADF required.	MALSR A5	MISSED APPROACH: Climb to 1800 then left turn on 345° bearing to ANGER LOM and hold.
<p>▼ For inop ALS, increase S-LOC 18 Cat C/D visibility to 1 3/8 SM. When local altimeter setting not received, use Louis Armstrong New Orleans Intl altimeter setting and increase S-ILS 18 DA to 339 feet; increase all MDAs 100 feet and S-LOC 18 visibility Cat C/D 1/4 SM, and Circling visibility Cat C/D 1/2 SM. For inop ALS when using Louis Armstrong New Orleans Intl altimeter setting, increase S-ILS all Cats visibility to 3/8 SM.</p>		

ATIS <b>118.325</b>	NEW ORLEANS APP CON <b>119.3 350.35</b>	HAMMOND TOWER ★ <b>120.575</b> (CTAF) 0	GND CON <b>119.85</b>	CLNC DEL <b>119.3</b> (When twr closed)
------------------------	--	--	--------------------------	---



CATEGORY	A	B	C	D
S-ILS 18	250-1/2 206 (300-1/2)			
S-LOC 18	540-1/2 496 (500-1/2)	540-1 496 (500-1)		
CIRCLING	540-1 494 (500-1)	620-1 574 (600-1 1/2)	920-2 3/4 874 (900-2 3/4)	

FAF to MAP 4.7 NM					
Knots	60	90	120	150	180
Min:Sec	4:42	3:08	2:21	1:53	1:34

SC-4, 15 MAY 2025 to 12 JUN 2025

SC-4, 15 MAY 2025 to 12 JUN 2025