

LOC/DME I-RVT <b>111.15</b> Chan <b>48</b> (Y)	APP CRS <b>002°</b>	Rwy Idg <b>8003</b> TDZE <b>261</b> Apt Elev <b>264</b>
--	------------------------	---

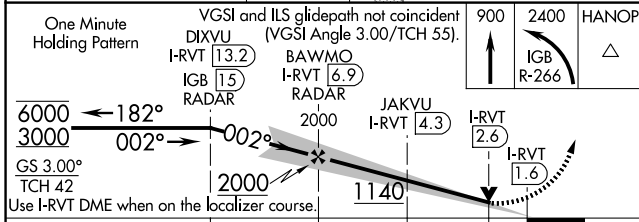
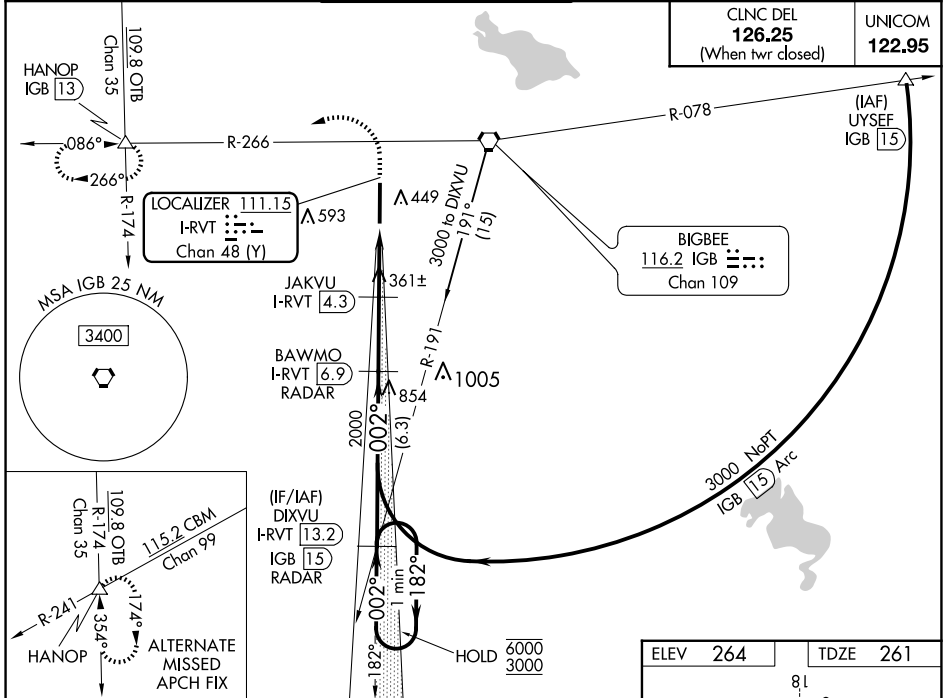
# ILS or LOC RWY 36

GOLDEN TRIANGLE RGNL (GTR)

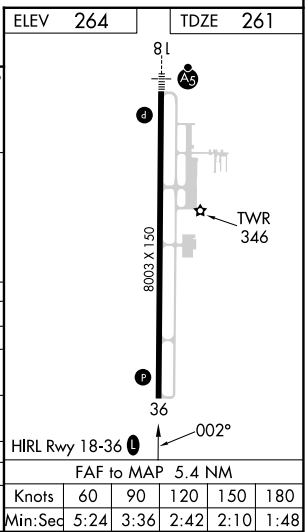
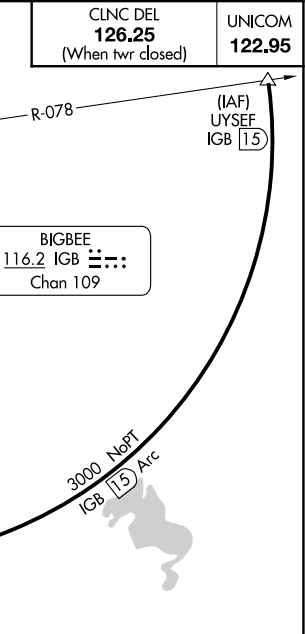
DME or RADAR required.

**▲** MISSED APPROACH: Climb to 900 then climbing left turn to 2400 on IGB VORTAC R-266 to HANOP INT/IGB VORTAC 13 DME and hold.

ATIS <b>126.375</b>	COLUMBUS APP CON* <b>135.6 323.275</b>	GOLDEN TRIANGLE TOWER* <b>118.2</b> (CTAF) <b>0 298.875</b>	GND CON <b>135.375 322.475</b>	CLNC DEL <b>135.375 322.475</b>
------------------------	---	--	-----------------------------------	------------------------------------



One Minute Holding Pattern	VGSI and ILS glidepath not coincident (VGSI Angle 3.00°/TCH 55').				900	2400	HANOP
	I-RVT 13.2	BAWMO I-RVT 6.9	JAKVU I-RVT 4.3	I-RVT 2.6	IGB R-266		
	IGB 15 RADAR	RADAR		I-RVT 1.6			
	6.3 NM	2.7 NM	1.7 NM	1 NM			
CATEGORY	A	C	D	E			
S-ILS 36		461-3/4	200 (200-3/4)				
S-LOC 36	1140-1 1/4	879 (900-1 1/4)	1140-2 1/2	879 (900-2 1/2)			
<b>C</b> CIRCLING	1140-1 1/4	876 (900-1 1/4)	1140-2 1/2 876 (900-2 1/2)	1140-2 3/4 876 (900-2 3/4)	1140-3 876 (900-3)		
JAKVU FIX MINIMUMS							
S-LOC 36	620-1 359 (400-1)						
<b>C</b> CIRCLING	760-1	496 (500-1)	960-2 696 (700-2)	960-2 1/4 696 (700-2 1/4)	960-2 1/2 696 (700-2 1/2)		



SC-4, 15 MAY 2025 to 12 JUN 2025

SC-4, 15 MAY 2025 to 12 JUN 2025

F knots	60	90	120	150	180
Min:Sec	5:24	3:36	2:42	2:10	1:48