


WAAS CH 72817 W13A	APP CRS 133°	Rwy Idg 5720 TDZE 67 Apt Elev 70
--	------------------------	---

RNAV (GPS) RWY 13

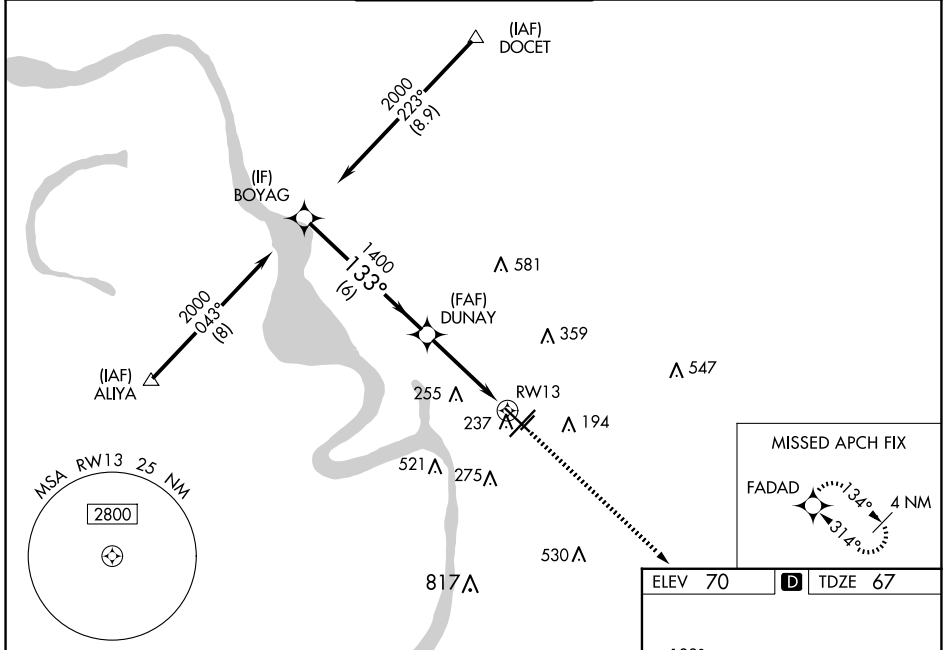
BATON ROUGE METRO, RYAN FLD (BTR)

⚠ For uncompensated Baro-VNAV systems, LNAV/VNAV NA below -5°C (23°F) or above 54°C (130°F). DME/DME RNP-0.3 NA. When local altimeter setting not received, use Hammond altimeter setting and increase all DA 91 feet and all MDA 100 feet, and increase LNAV/VNAV all Cats visibility 1/8 mile, and LNAV Cats C and D visibility 3/8 mile. For inop MALSRS when using Hammond altimeter setting, increase LPV all Cats visibility to 3/8 mile, LNAV Cat C and D visibility to 1/8 mile. Baro-VNAV and VDP NA when using Hammond altimeter setting.

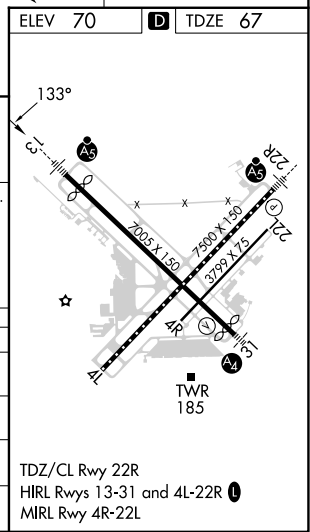
MALSRS


MISSED APPROACH: Climb to 2300 direct FADAD and hold.

ATIS 125.2	BATON ROUGE APP CON ★ 120.3 278.3	RYAN TOWER ★ 118.45 (CTAF) 257.8	GND CON 121.9	CLNC DEL 119.4	UNICOM 122.95
----------------------	---	--	-------------------------	--------------------------	-------------------------



BOYAG		DUNAY		2300	FADAD
2000		1400		↑	✧
133°		1.3 NM to RWY 13		*LNNAV only.	
GP 3.00° TCH 57		1400		RWY 13	
6 NM		2.7 NM		1.3	
CATEGORY	A	B	C	D	
LPV DA		267-1/2	200 (200-1/2)		
LNAV/VNAV DA		465-7/8	398 (400-7/8)		
LNAV MDA	540-1/2	473 (500-1/2)	540-1	473 (500-1)	
C CIRCLING	560-1 490 (500-1)	660-1 590 (600-1)	780-2 710 (800-2)	840-2 1/2 770 (800-2 1/2)	



SC-4, 15 MAY 2025 to 12 JUN 2025

SC-4, 15 MAY 2025 to 12 JUN 2025