

WAAS CH 90308 W34A	APP CRS 341°	Rwy ldg 4002 TDZE 168 Apt Elev 168
--	------------------------	---

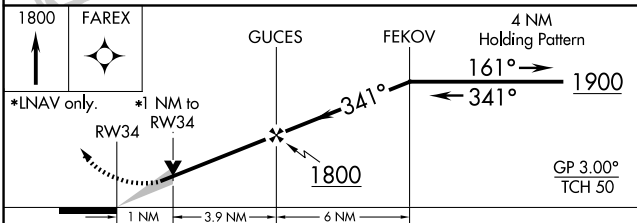
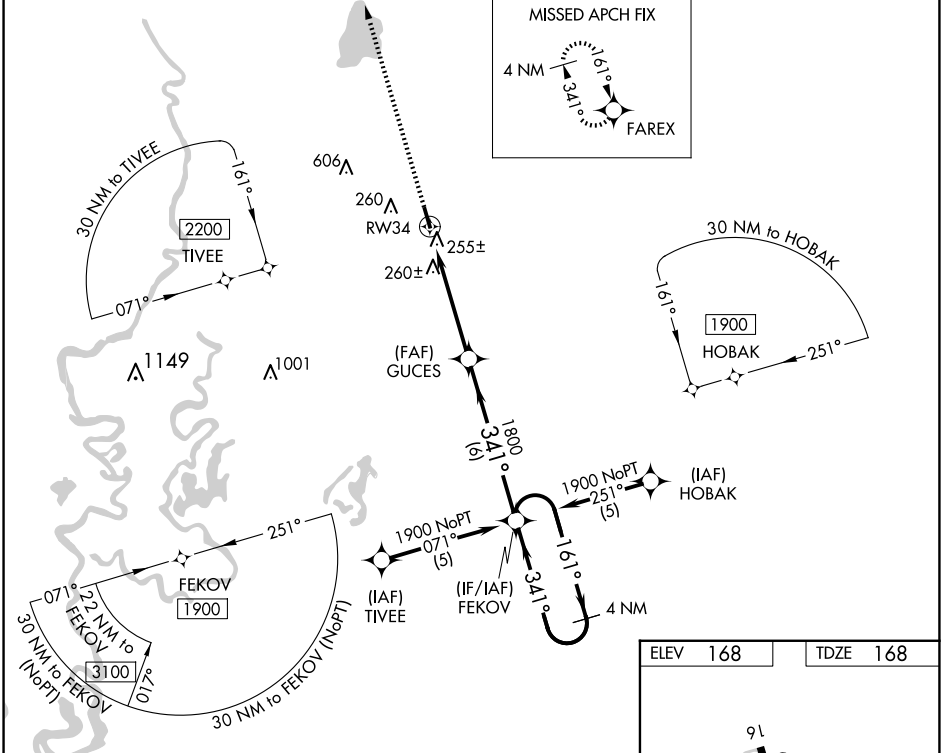
RNAV (GPS) RWY 34

MOREHOUSE MEML (BQP)

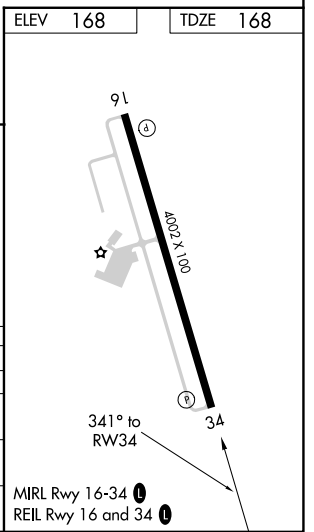
⚠ Baro-VNAV NA when using Monroe altimeter setting. For uncompensated Baro-VNAV systems, LNAV/VNAV NA below -15°C (5°F) or above 54°C (130°F). DME/DME RNP-0.3 NA. VDP NA when using Monroe altimeter setting. When local altimeter setting not received, use Monroe altimeter setting and increase LPV DA to 559', LNAV/VNAV DA to 602' and all MDA 60 feet; increase LNAV Cat C visibility 1/8 SM and Circling Cat C visibility 1/4 SM.

MISSED APPROACH:
Climb to 1800 direct FAREX and hold.

AWOS-3PT 118.375	MONROE APP CON ★ 126.9 307.9	UNICOM 122.8 (CTAF) 0
----------------------------	--	---------------------------------



CATEGORY	A	B	C	D
LPV DA	508-1¼	340 (400-1¼)		NA
LNAV/VNAV DA	551-1¼	383 (400-1¼)		NA
LNAV MDA	520-1	352 (400-1)		NA
CIRCLING	560-1 392 (400-1)	780-1 612 (700-1)	820-1¾ 652 (700-1¾)	NA



SC-4, 15 MAY 2025 to 12 JUN 2025

SC-4, 15 MAY 2025 to 12 JUN 2025