

WAAS CH <b>45737</b> W16A	APP CRS <b>155°</b>	Rwy Idg 4997 TDZE 82 Apt Elev 83
---------------------------------	------------------------	---

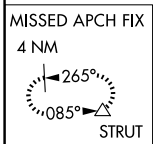
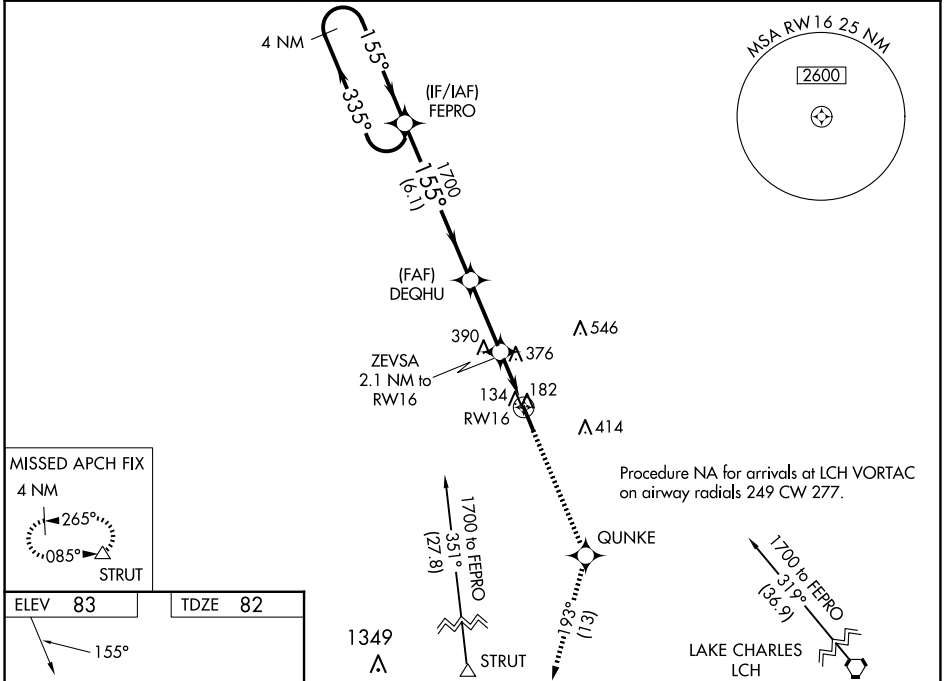
# RNAV (GPS) RWY 16

DE QUINCY INDUSTRIAL AIRPARK (5R8)

**▼** Baro-VNAV NA when using Sulphur altimeter setting. DME/DME RNP-0.3 NA.  
**▲ NA** When local altimeter setting not received, use Sulphur altimeter setting and increase all DA 55 feet and MDA 60 feet, increase LPV visibility all Cats ¼, LNAV/VNAV all Cats ¼ and LNAV and Circling Cat C visibility ¼ mile. For uncompensated Baro-VNAV systems, LNAV/VNAV NA below -15°C (5°F) or above 54°C (130°F). Helicopter visibility reduction below 1 SM NA. Night landing: Rwy 16 NA.

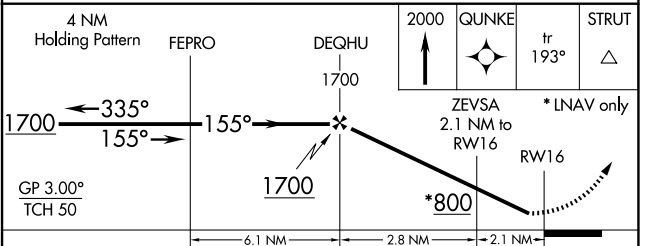
**MISSED APPROACH:** Climb to 2000 direct QUNKE and on track 193° to STRUT and hold.

AWOS-3PT <b>121.2</b>	LAKE CHARLES APP CON * <b>119.35 282.3</b>	UNICOM <b>122.8 (CTAF) 0</b>
--------------------------	---	---------------------------------



ELEV 83	TDZE 82
---------	---------

155°  
4997 x 75  
142  
34



CATEGORY	A	B	C	D
LPV DA	365-1 283 (300-1)			NA
LNAV/VNAV DA	799-2½ 717 (800-2½)			NA
LNAV MDA	700-1	618 (700-1)	700-1¾ 618 (700-1¾)	NA
<b>C</b> CIRCLING	700-1 617 (700-1)	740-1 657 (700-1)	740-1¾ 657 (700-1¾)	NA

SC-4, 15 MAY 2025 to 12 JUN 2025

SC-4, 15 MAY 2025 to 12 JUN 2025