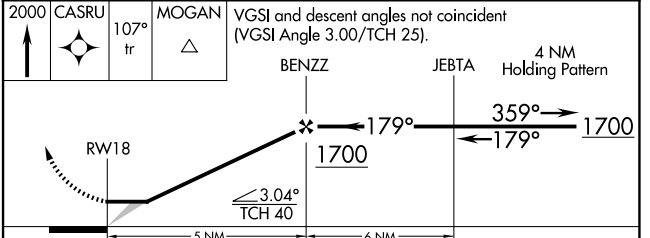
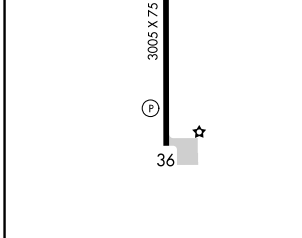
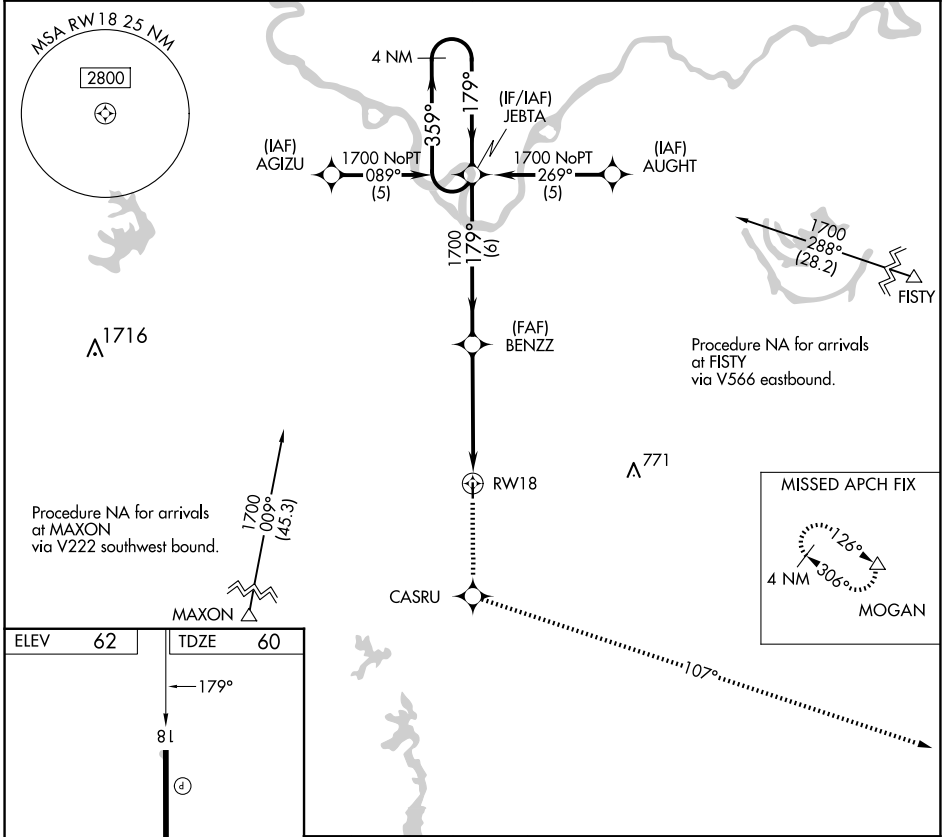


APP CRS	Rwy Idg	<b>3005</b>
<b>179°</b>	TDZE	<b>60</b>
	Apt Elev	<b>62</b>

# RNAV (GPS) RWY 18

BUNKIE MUNI (2R6)

RNP APCH.	MISSED APPROACH: Climb to 2000 direct CASRU and via 107° track to MOGAN and hold.
<p>▼ Use Alexandria Intl altimeter setting; when not received, use Esler Rgnl altimeter setting.</p> <p>▲ NA</p>	
POLK APP CON <b>125.4 302.2</b>	CTAF <b>122.9</b>



REIL Rwy 18 and 36	MIRL Rwy 18-36	2000 CASRU 107° tr MOGAN	VGSI and descent angles not coincident (VGSI Angle 3.00/TCH 25).	BENZZ	JEBTA	4 NM Holding Pattern
CATEGORY	A	B	C	D		
LNAV MDA	600-1	540 (600-1)			NA	

SC-4, 15 MAY 2025 to 12 JUN 2025

SC-4, 15 MAY 2025 to 12 JUN 2025