

WAAS CH <b>81831</b> <b>W15A</b>	APP CRS <b>157°</b>	Rwy Idg TDZE Apt Elev	<b>3808</b> <b>1230</b> <b>1230</b>
--	------------------------	-----------------------------	---

# RNAV (GPS) RWY 15

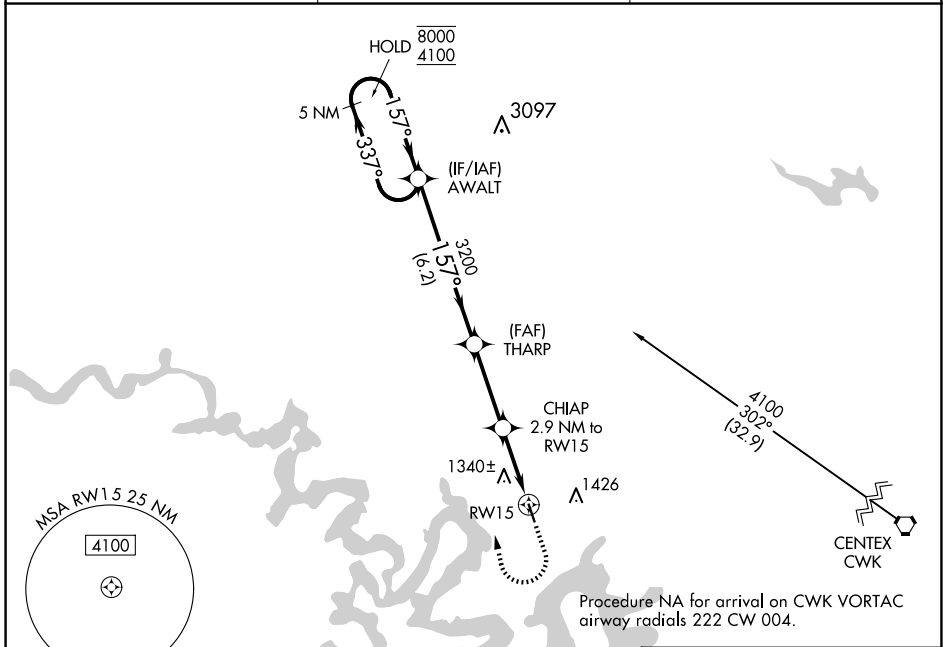
LAGO VISTA TX/RUSTY ALLEN (RYW)

RNP APCH - GPS.

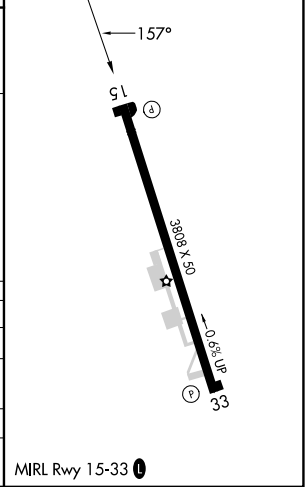
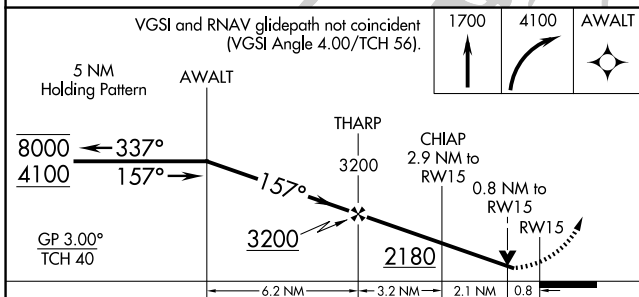
▼ For uncompensated Baro-VNAV systems, LNAV/VNAV NA below -17°C or above 54°C. Rwy 15 helicopter visibility reduction below ¾ SM NA.

MISSED APPROACH: Climb to 1700 then climbing right turn to 4100 direct AWALT and hold, continue climb-in-hold to 4100.

AWOS-3PT <b>119.375</b>	AUSTIN APP CON <b>119.0 370.85</b>	UNICOM <b>122.725</b> (CTAF) <b>0</b>
----------------------------	---------------------------------------	--



ELEV 1230	<b>D</b> TDZE 1230
-----------	--------------------



CATEGORY	A	B	C	D
LPV DA	1480-1	250 (300-1)		NA
LNAV/VNAV DA	1641-1½	411 (500-1½)		NA
LNAV MDA	1620-1	390 (400-1)		NA
<b>C</b> CIRCLING	1660-1 430 (500-1)	1860-1 630 (700-1)		NA

MIRL Rwy 15-33 **0**

SC-3, 15 MAY 2025 to 12 JUN 2025

SC-3, 15 MAY 2025 to 12 JUN 2025