

| | | | |
|--|------------------------|-----------------------------|---|
| WAAS CH 69629 W32A | APP CRS 317° | Rwy Idg TDZE Apt Elev | 6236 2605 2613 |
|--|------------------------|-----------------------------|---|

RNAV (GPS) RWY 32

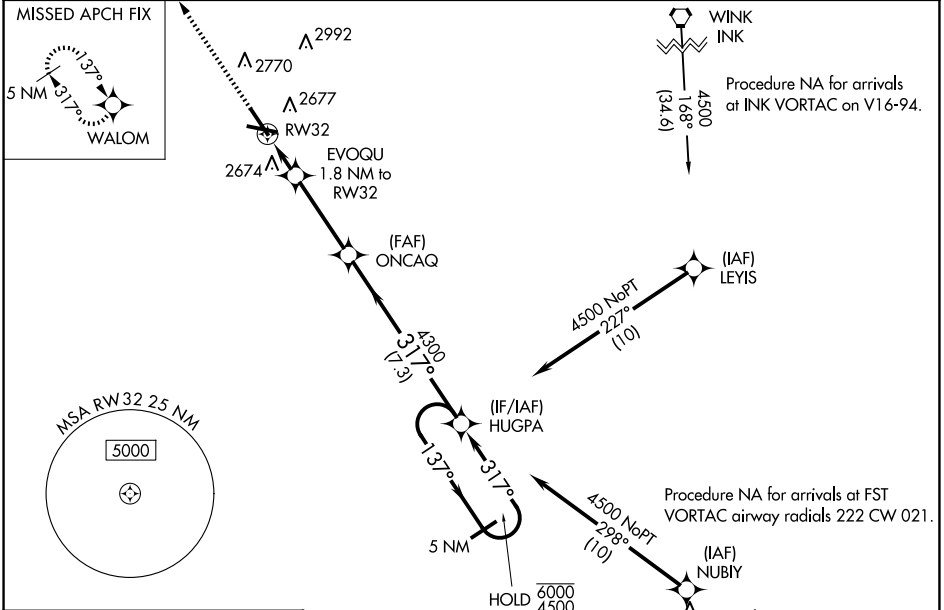
PECOS MUNI (P,E,Q)

RNP APCH - GPS.

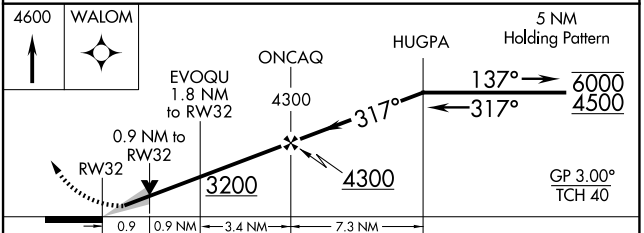
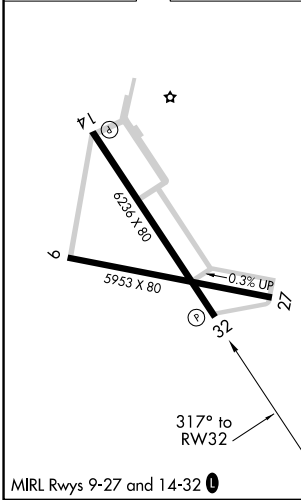
▼ Baro-VNAV and VDP NA when using Wink altimeter setting. For uncompensated Baro-VNAV systems, LNAV/VNAV NA below -20°C or above 54°C. When local altimeter setting not received, use Wink altimeter setting: increase LPV DA to 2900 feet, LNAV/VNAV DA to 2950 feet and all visibilities ¼ SM; increase all MDA 100 feet and visibility Cat C and LNAV Cat D ¼ SM. Circling Rwy 9, 27 NA at night.

MISSED APPROACH:
Climb to 4600 direct
WALOM and hold.

| | | |
|--------------------------|---|---------------------------------|
| AWOS-3 118.175 | ALBUQUERQUE CENTER 135.875 292.15 | UNICOM 122.8 (CTAF) 0 |
|--------------------------|---|---------------------------------|



| | |
|-----------|-----------|
| ELEV 2613 | TDZE 2605 |
|-----------|-----------|



| CATEGORY | A | B | C | D |
|-------------------|-----------------------|-----------------------|-------------------------|-------------------------|
| LPV DA | | 2805-¾ | 200 (200-¾) | |
| LNAV/VNAV DA | | 2855-¾ | 250 (300-¾) | |
| LNAV MDA | | 2940-1 | 335 (400-1) | |
| C CIRCLING | 3060-1 447 (500-1) | 3140-1 527 (600-1) | 3360-2¼ 747 (800-2¼) | 3360-2½ 747 (800-2½) |

SC-3, 15 MAY 2025 to 12 JUN 2025

SC-3, 15 MAY 2025 to 12 JUN 2025