

WAAS CH <b>78400</b> <b>W14A</b>	APP CRS <b>137°</b>	Rwy Idg <b>6983</b> TDZE <b>107</b> Apt Elev <b>107</b>
--	------------------------	---

# RNAV (GPS) RWY 14

MC ALLEN INTL (MFE)

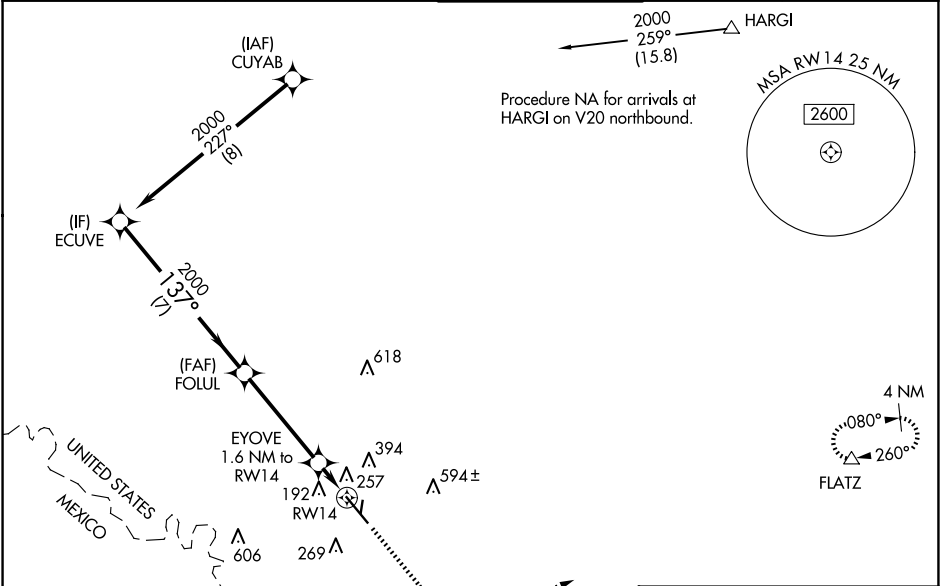
**RNP APCH-GPS.**

▼ Circling NA northeast of Rwy 14-32. For inop ALS, increase LNAV/VNAV visibility all Cats to  $\frac{3}{8}$  SM and LNAV visibility Cat C/D to  $\frac{1}{8}$  SM. For inop ALS when using Weslaco altimeter setting, increase LNAV/VNAV visibility all Cats to 1 SM. For uncompensated Baro-VNAV systems, LNAV/VNAV NA below 1°C or above 54°C. When local altimeter setting not received, use Weslaco altimeter setting and increase all DA 39 feet and LNAV/VNAV all Cats visibility  $\frac{1}{8}$  SM; increase all MDA 40 feet and LNAV Cat C/D visibility  $\frac{1}{8}$  SM.

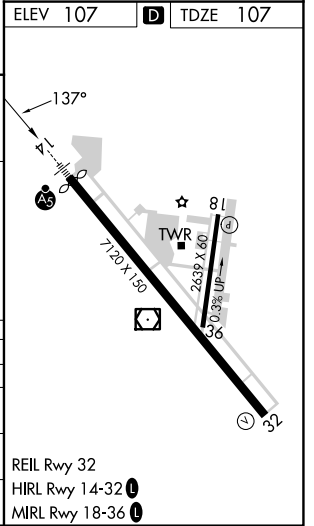
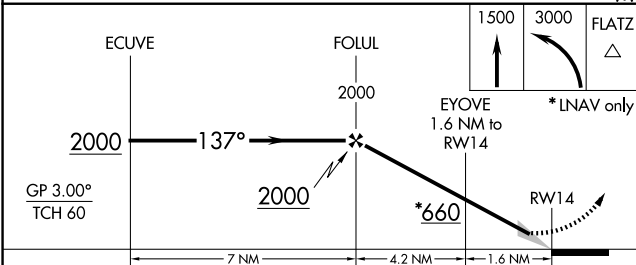
▲ MISSED APPROACH: Climb to 1500 then climbing left turn to 3000 direct FLATZ and hold.

MALS R

ATIS <b>128.5</b>	VALLEY APP CON <b>126.55 377.2</b>	MC ALLEN TOWER ★ <b>118.5 (CTAF) 0 256.9</b>	GND CON <b>121.8</b>	UNICOM <b>122.95</b>
----------------------	---------------------------------------	---	-------------------------	-------------------------



ELEV 107	<b>D</b> TDZE 107
----------	-------------------



CATEGORY	A	B	C	D
LPV DA		307- $\frac{1}{2}$	200 (200- $\frac{1}{2}$ )	
LNAV/VNAV DA		418- $\frac{1}{2}$	311 (400- $\frac{1}{2}$ )	
LNAV MDA	520- $\frac{1}{2}$	413 (500- $\frac{1}{2}$ )	520- $\frac{3}{4}$	413 (500- $\frac{3}{4}$ )
<b>C</b> CIRCLING	580-1	473 (500-1)	580-1 $\frac{1}{2}$ 473 (500-1 $\frac{1}{2}$ )	800-2 $\frac{1}{4}$ 693 (700-2 $\frac{1}{4}$ )