

APP CRS <b>172°</b>	Rwy Idg <b>5004</b>
	TDZE <b>1751</b>
	Apt Elev <b>1754</b>

# RNAV (GPS) RWY 17

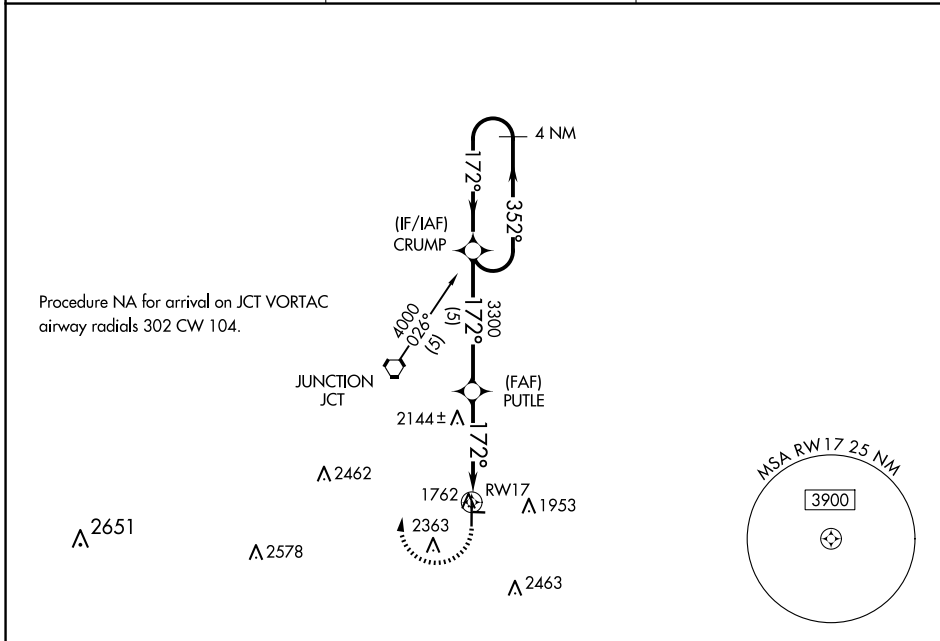
KIMBLE COUNTY (JCT)

RNP APCH - GPS.

**⚠** Circling NA to Rwy 8-26. Rwy 17 helicopter visibility reduction below 3/4 SM NA.

**MISSED APPROACH:** Climbing right turn to 4000 direct CRUMP WP and hold.

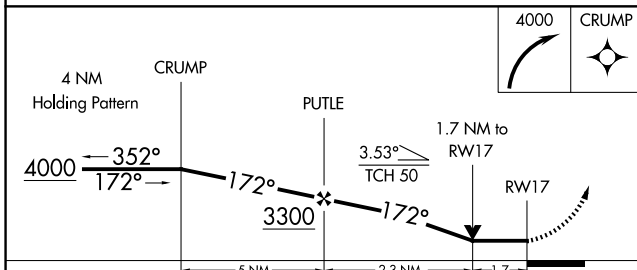
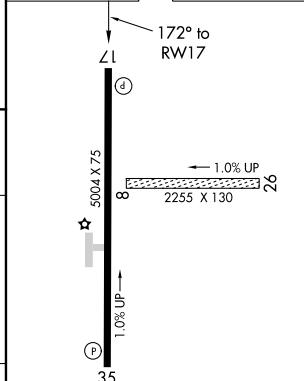
ASOS <b>119.275</b>	HOUSTON CENTER <b>125.75 346.4</b>	UNICOM <b>122.8 (CTAF) 1</b>
------------------------	---------------------------------------	---------------------------------



SC-3, 15 MAY 2025 to 12 JUN 2025

SC-3, 15 MAY 2025 to 12 JUN 2025

ELEV 1754	TDZE 1751
-----------	-----------



CATEGORY	A	B	C	D
LNVA MDA	2420-1	669 (700-1)	2420-1 3/4 669 (700-1 3/4)	NA
CIRCLING	2420-1 666 (700-1)	2680-1 1/4 926 (1000-1 1/4)	2780-3 1026 (1100-3)	NA

MRL Rwy 17-35 1