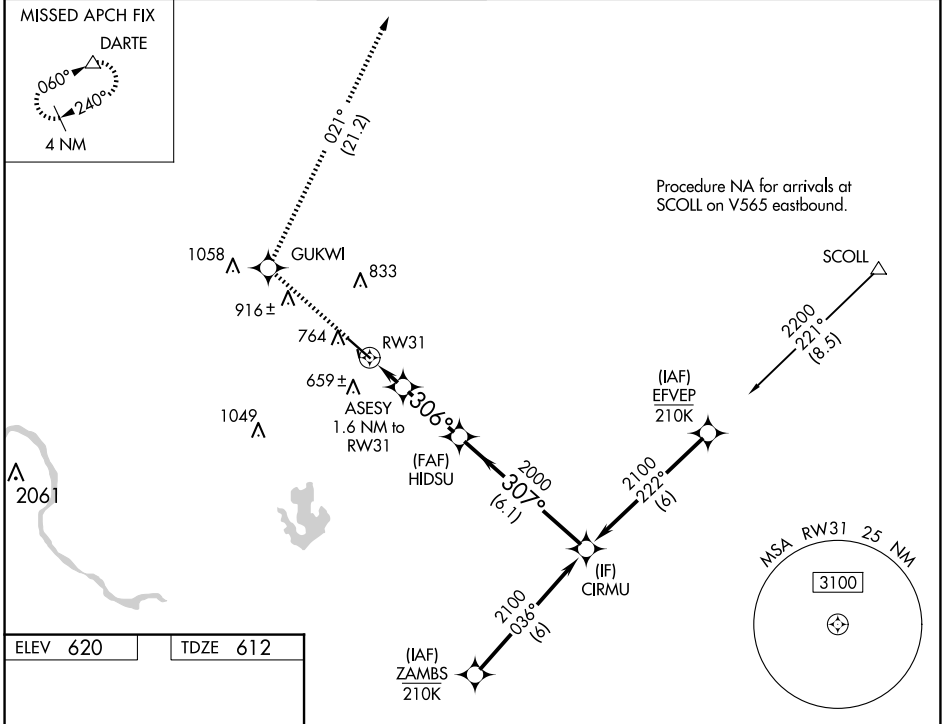


WAAS CH <b>45916</b> <b>W31A</b>	APP CRS <b>306°</b>	Rwy Idg <b>6025</b> TDZE <b>612</b> Apt Elev <b>620</b>
--	------------------------	---

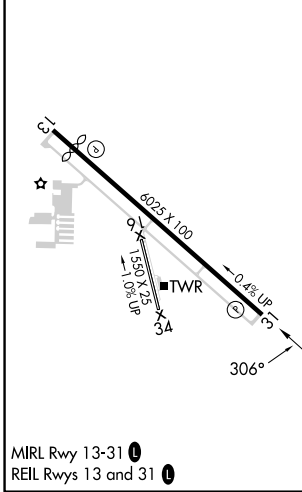
# RNAV (GPS) RWY 31

AUSTIN EXEC (EDC)

RNP APCH - GPS.				MISSED APPROACH: Climb to 3500 direct GUKWI and on track 021° to DARTE and hold.	
AWOS-3 <b>118.825</b>	AUSTIN APP CON <b>127.225 317.65</b>	EXECUTIVE TOWER★ <b>120.3</b> (CTAF) <b>0</b>	GND CON <b>119.45</b>	CLNC DEL <b>126.025</b> (When twr closed)	UNICOM <b>122.975</b>



ELEV 620	TDZE 612
----------	----------



3500	GUKWI	tr 021°	DARTE	CIRMU
	ASESY 1.6 NM to RW31	HIDSU 2000		2100
	0.9 NM to RW31			
				GP 3.00° TCH 40
	0.9	0.7	2.7 NM	6.1 NM
CATEGORY	A	B	C	D
LPV DA		812-3/4	200 (200-3/4)	
LNAV/VNAV DA		909-7/8	297 (300-7/8)	
LNAV MDA	920-1	308 (300-1)	920-7/8	308 (300-7/8)
CIRCLING	1140-1 520 (600-1)	1160-1 540 (600-1)	1280-1 3/4 660 (700-1 3/4)	1280-2 660 (700-2)