

VORTAC CRP <b>115.5</b>	APP CRS <b>192°</b>	Rwy Idg TDZE Apt Elev	<b>6080</b> <b>42</b> <b>46</b>
Chan <b>102</b>			

# VOR or TACAN RWY 18

CORPUS CHRISTI INTL (CRP)

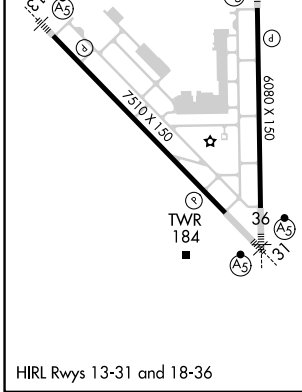
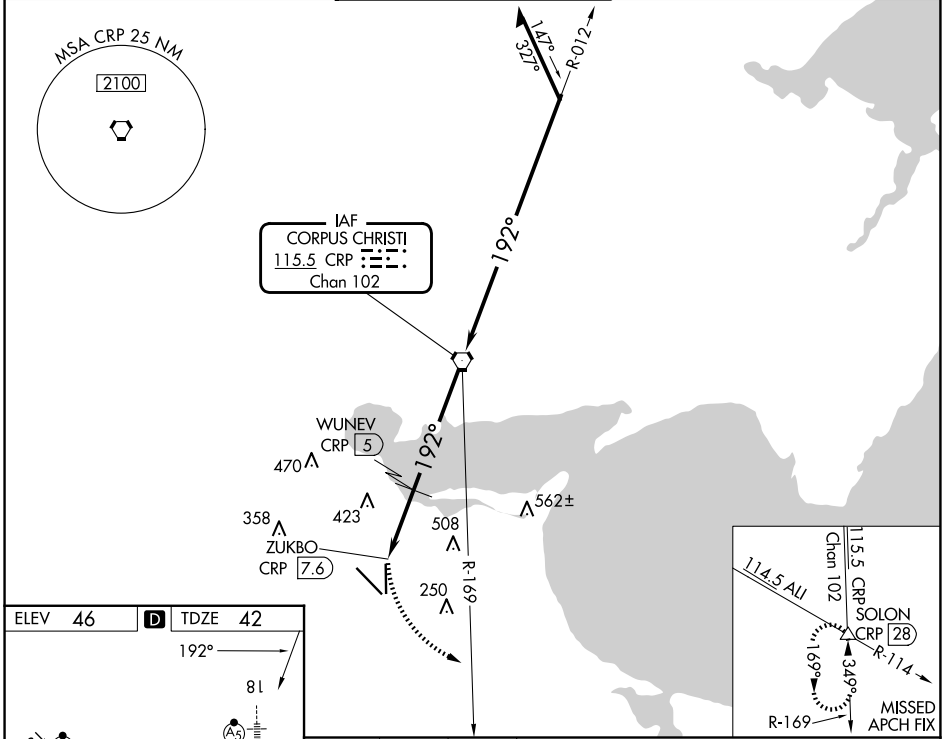
DME required.

**▲** Rwy 18 helicopter visibility reduction below 3/4 SM NA. Inop table does not apply.

MALSRL

MISSED APPROACH: Climbing left turn to 2000 on heading 150° and CRP VORTAC R-169 to SOLON INT/CRP 28 DME and hold.

ATIS <b>126.8</b>	CORPUS APP CON <b>120.9 348.725</b>	CORPUS TOWER <b>119.4 257.8</b>	GND CON <b>121.9 269.15</b>	CLNC DEL <b>118.55</b>
----------------------	--	------------------------------------	--------------------------------	---------------------------



ELEV 46	<b>D</b>	TDZE 42			
192°			81		
2000			CRP R-169	SOLON	
WUNEV CRP 5			ZUKBO CRP 7.6	CRP VORTAC	
3.00° TCH 50			1000	1700	
0.2 1.6 NM			1 NM	5 NM	
CATEGORY	A	B	C	D	E
S-18	680-1	638 (700-1)	680-1 3/4	638 (700-1 3/4)	
<b>C</b> CIRCLING	680-1 634 (700-1)	780-1 734 (800-1)	820-2 1/4 774 (800-2 1/4)	820-2 1/2 774 (800-2 1/2)	820-2 3/4 774 (800-2 3/4)

Remain within 15 NM

SC-3, 15 MAY 2025 to 12 JUN 2025

SC-3, 15 MAY 2025 to 12 JUN 2025