

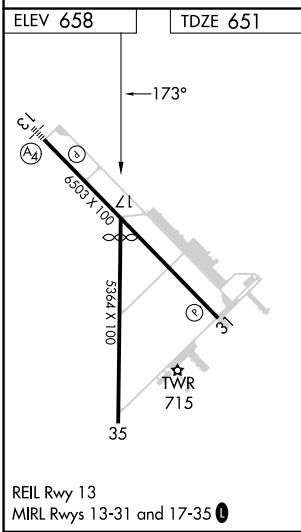
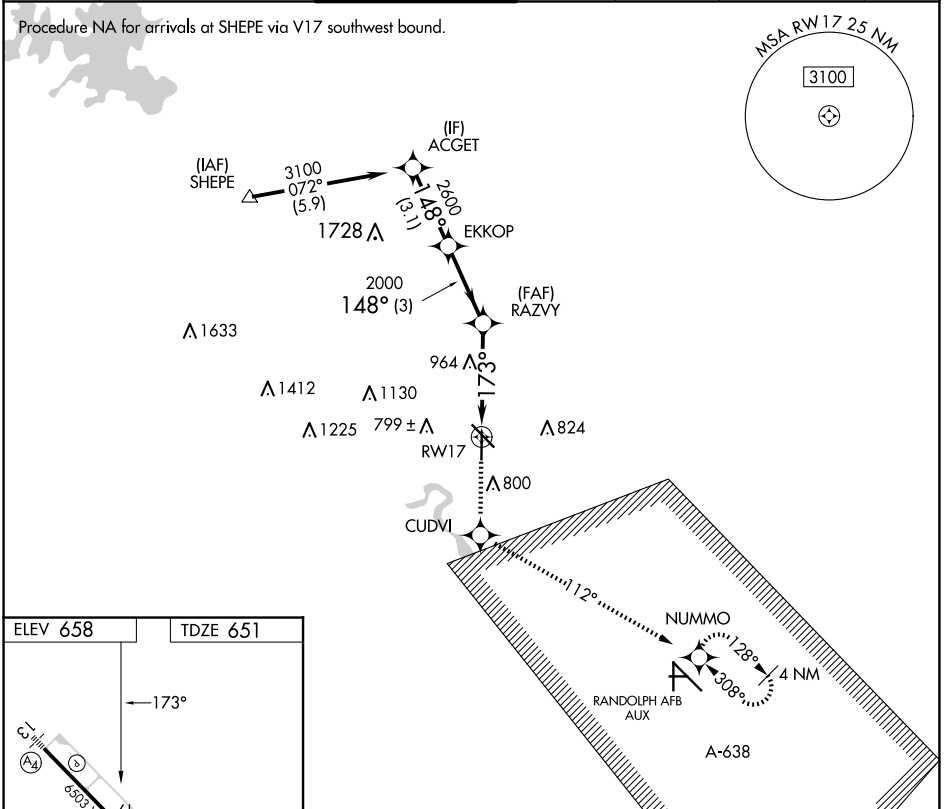
APP CRS	Rwy Idg	4842
173°	TDZE	651
	Apt Elev	658

RNAV (GPS) RWY 17

NEW BRAUNFELS NTL (B.A.Z)

RNP APCH.		MISSED APPROACH: Climb to 3500 direct CUDVI and via 112° track to NUMMO and hold, continue climb-in-hold to 3500.	
<p>▼ When local altimeter setting not received, use San Marcos Rgnl altimeter setting and increase all MDAs 60 feet and visibility Cat C ¼ SM. VDP NA when using San Marcos Rgnl altimeter setting.</p>			

ATIS	SAN ANTONIO APP CON	NEW BRAUNFELS TOWER*	GND CON	CLNC DEL	CLNC DEL	UNICOM
119.325	124.45 335.625	127.05 (CTAF) 285.4	120.175	134.75	134.75 (When twr closed)	122.7



3500	CUDVI	NUMMO	ACGET
↑	✧	✧	
	tr 112°		
	1.6 NM to RWY 17	RAZVY	EKKOP
	TCH 45	2000	3100
	173°	148°	Procedure Turn NA
	1.6 NM	2.5 NM	3 NM
			3.1 NM
CATEGORY	A	B	C
LNAV MDA	1220-1	569 (600-1)	1220-1 5/8 569 (600-1 5/8)
			1220-1 3/4 569 (600-1 3/4)

SC-3, 15 MAY 2025 to 12 JUN 2025

SC-3, 15 MAY 2025 to 12 JUN 2025