

VORTAC ACT 115.3 Chan 100	APP CRS 321°	Rwy Idg TDZE Apt Elev	5103 516 516
--	------------------------	-----------------------------	---

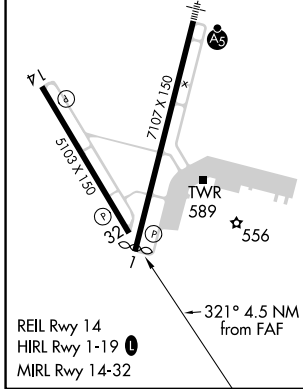
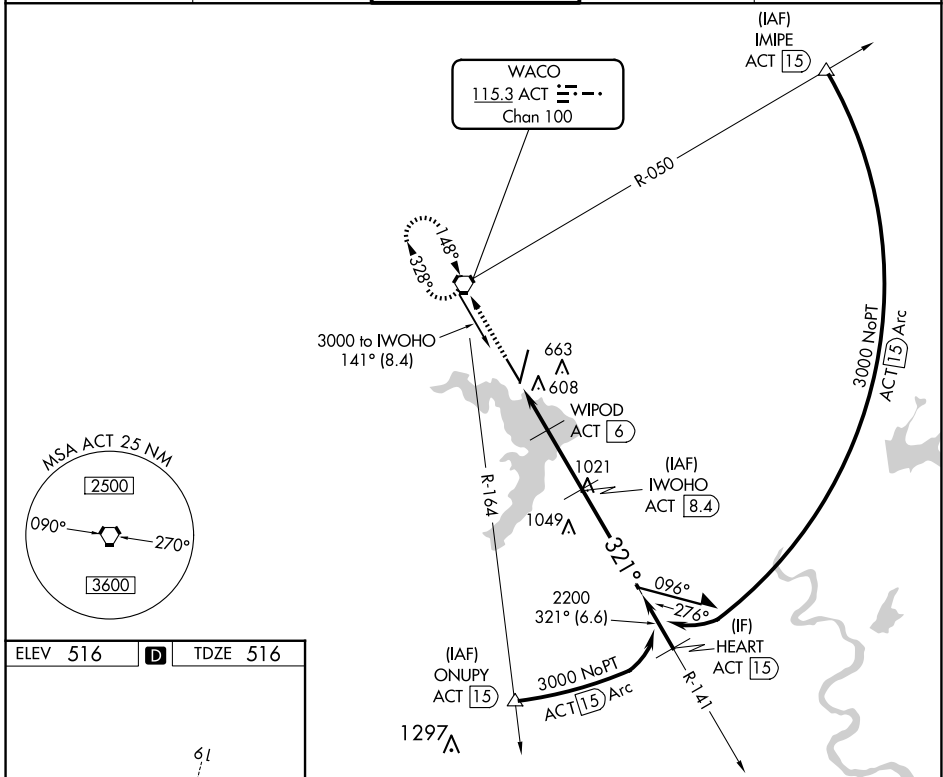
VOR/DME RWY 32

WACO RGNL (ACT)

ASR VDP NA with Mc Gregor Exec altimeter setting. When local altimeter setting not received use Mc Gregor Exec altimeter setting and increase all MDA 40 feet; increase S-32 Cats C/D visibility 1/8 mile and Circling Cat D visibility 1/4 mile.

MISSED APPROACH: Climb to 3000 direct ACT VORTAC and hold, continue climb-in-hold to 3000.

ATIS 123.85	WACO APP CON * 127.65 227.125	WACO TOWER * 119.3 (CTAF) 0 257.8	GND CON 121.9	UNICOM 122.95
-----------------------	---	---	-------------------------	-------------------------



3000 ACT	WACO ACT [15.3]	WIPOD ACT [6]	IWOHO ACT [8.4]	3000	Remain within 10 NM
2200 ACT [15]	ONUPY ACT [15]	HEART ACT [15]	2200	3000	VGSI and descent angles not coincident (VGSI Angle 3.00/TCH 58).
1300 ACT [4]	1300 TCH 61	1300	1300	2200	
0.9 NM	1.1 NM	2.4 NM			
CATEGORY	A	B	C	D	
S-32	860-1 344 (400-1)				
CIRCLING	940-1 424 (500-1)	980-1 464 (500-1)	1020-1½ 504 (600-1½)	1160-2 644 (700-2)	

SC-3, 15 MAY 2025 to 12 JUN 2025

SC-3, 15 MAY 2025 to 12 JUN 2025