

WAAS CH <b>65919</b> W01A	APP CRS <b>007°</b>	Rwy Idg TDZE <b>511</b> Apt Elev <b>516</b>
---------------------------------	------------------------	---

# RNAV (GPS) RWY 1

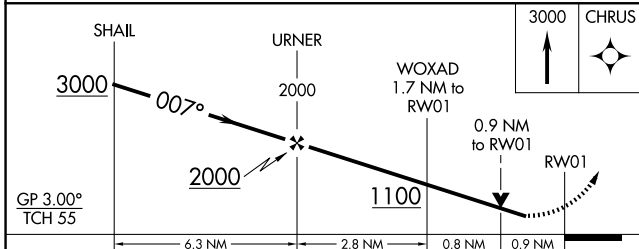
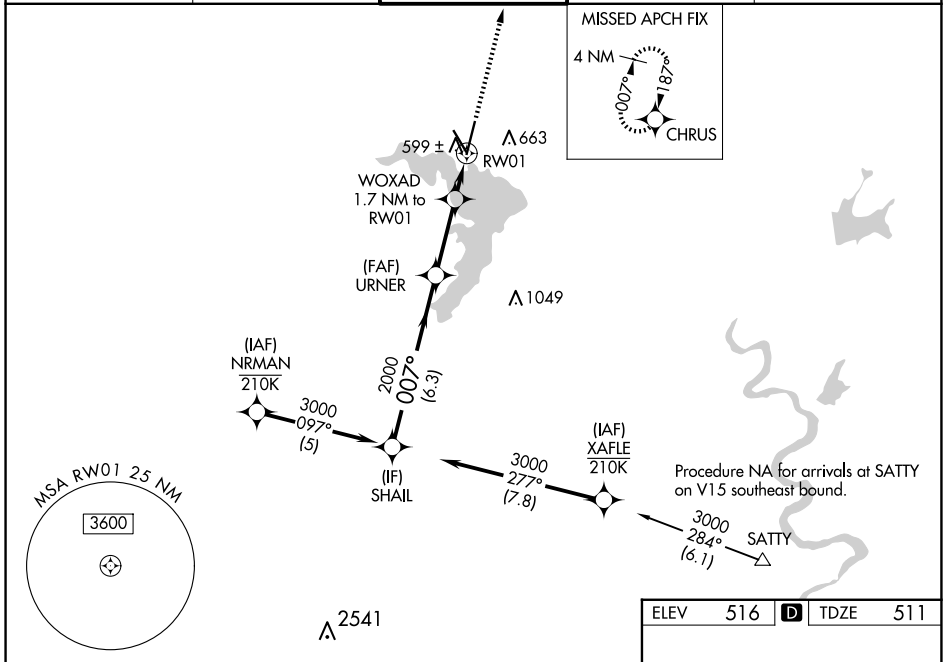
WACO RGNL (ACT)

RNP APCH - GPS.

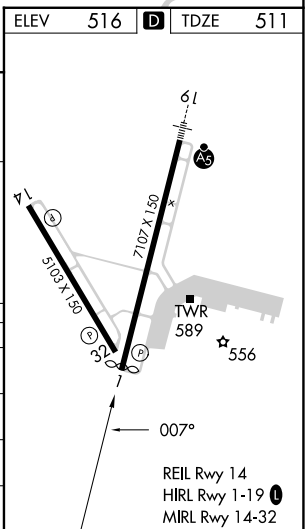
**ASR** For uncompensated Baro-VNAV systems, LNAV/VNAV NA below -8°C or above 54°C. Baro-VNAV and VDP NA when using PWG altimeter setting. Rwy 1 helicopter visibility reduction below 3/4 SM NA. When local altimeter setting not received, use PWG altimeter setting and increase LPV DA to 792 feet and all visibilities 1/8 SM. Increase LNAV/VNAV DA to 813 feet; increase all MDAs 40 feet and LNAV visibility Cat C/D 1/8 SM, and Circling visibility Cat D 1/4 SM.

**MISSED APPROACH:**  
Climb to 3000 direct CHRUS and hold.

ATIS <b>123.85</b>	WACO APP CON ★ <b>127.65 227.125</b>	WACO TOWER ★ <b>119.3 (CTAF) 0 257.8</b>	GND CON <b>121.9</b>	UNICOM <b>122.95</b>
-----------------------	---	---	-------------------------	-------------------------



CATEGORY	A	B	C	D
LPV DA		761-3/4	250 (300-3/4)	
LNAV/VNAV DA		782-7/8	271 (300-7/8)	
LNAV MDA		860-1	349 (400-1)	
CIRCLING	940-1	980-1	1020-1 1/2	1160-2
	424 (500-1)	464 (500-1)	504 (600-1 1/2)	644 (700-2)



SC-3, 15 MAY 2025 to 12 JUN 2025

SC-3, 15 MAY 2025 to 12 JUN 2025