

| | | | |
|---|------------------------|-----------------------------|---|
| LOC/DME I-EFE 109.35 Chan 30(Y) | APP CRS 179° | Rwy Idg TDZE Apt Elev | 7002 576 589 |
|---|------------------------|-----------------------------|---|

ILS or LOC RWY 18

MCKINNEY NTL (TKI)

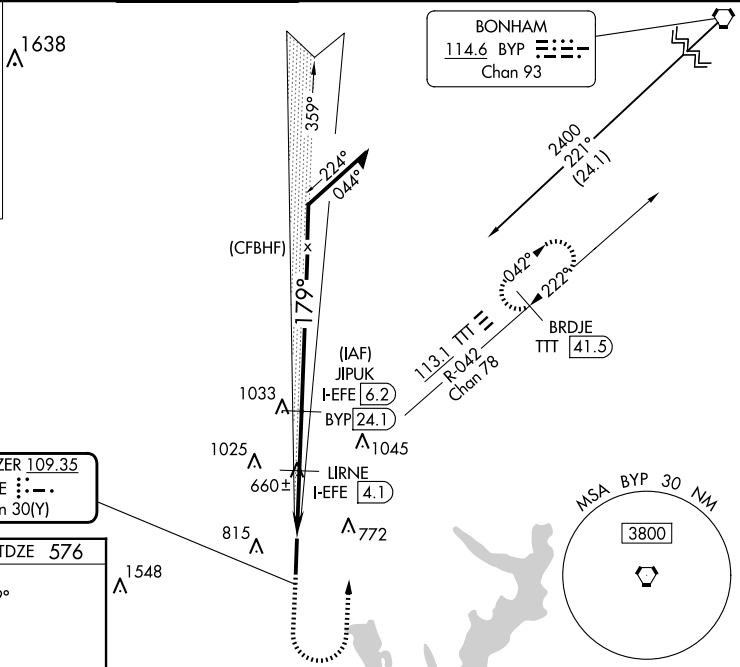
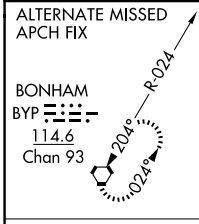
DME required for procedure entry.
DME required.

▼ VDP NA when using Dallas Love Fld altimeter setting. When local altimeter setting not received, use Dallas Love Fld altimeter setting and increase all DA 70 feet and all MDA 80 feet, increase S-LOC 18 Cats C/D visibility 1/2 SM, increase Circling visibility Cat C 1/2 SM, Cat D 1/4 SM. For inop ALS, increase S-LOC 18 Cats C/D visibility to 1 SM. For inop ALS when using Dallas Love Fld altimeter setting, increase S-ILS 18 all Cats visibility to 1/2 SM and increase S-LOC 18 Cats C/D to 1 1/4 SM.

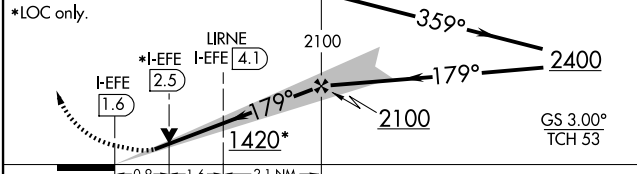
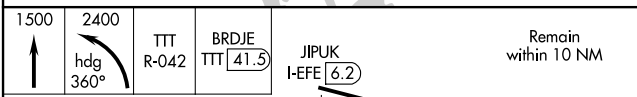
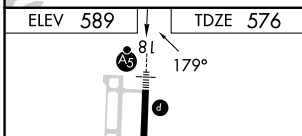


MISSED APPROACH:
Climb to 1500 then climbing left turn to 2400 on heading 360° and on TTT VOR/DME R-042 to BRDJE/TTT 41.5 DME and hold.

| | | | | | |
|------------------------|---|---|---------------------------|--|-------------------------|
| ATIS 119.925 | LONE STAR APP CON 124.3 282.275 | MCKINNEY TOWER ★ 118.825 (CTAF) 0 | GND CON 121.875 | CLNC DEL 121.35 (When twr closed) | UNICOM 122.95 |
|------------------------|---|---|---------------------------|--|-------------------------|



LOCALIZER 109.35
I-EFE ---
Chan 30(Y)



| | | | | | |
|-------------------|-------------|-------------|-----------------|-----------------|------|
| FAF to MAP 4.6 NM | Knots | | | | |
| | 60 | 90 | 120 | 150 | 180 |
| | 4:37 | 3:05 | 2:19 | 1:51 | 1:32 |
| Min:Sec | 4:37 | 3:05 | 2:19 | 1:51 | 1:32 |
| CIRCLING | 1040-1 | 1120-1 | 1200-1 1/4 | 1380-2 1/2 | |
| | 451 (500-1) | 531 (600-1) | 611 (700-1 1/4) | 791 (800-2 1/2) | |

SC-2, 15 MAY 2025 to 12 JUN 2025

SC-2, 15 MAY 2025 to 12 JUN 2025