

KUSSO ONE DEPARTURE (RNAV)

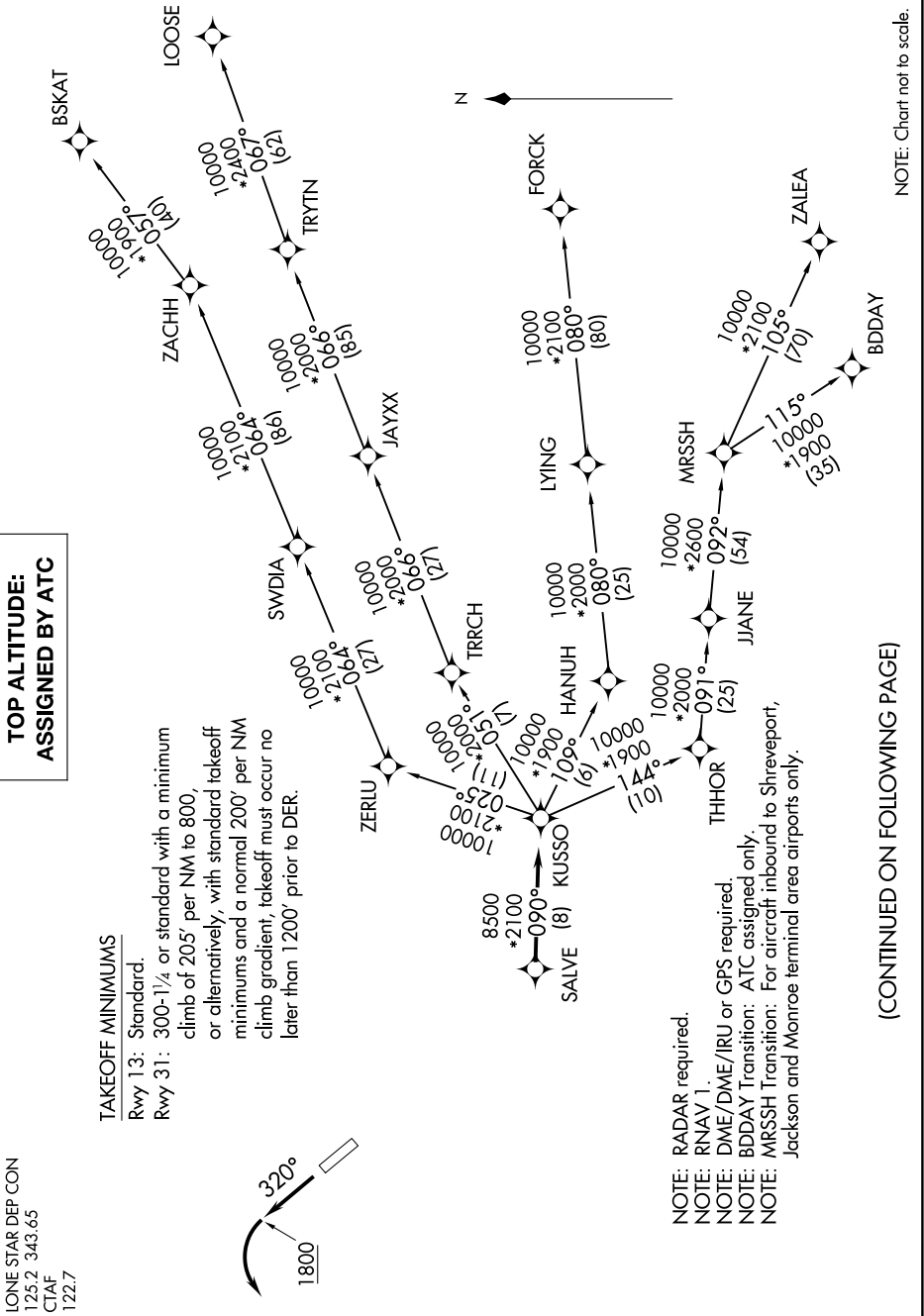
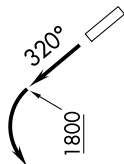
SC-2, 15 MAY 2025 to 12 JUN 2025

TOP ALTITUDE: ASSIGNED BY ATC

TAKEOFF MINIMUMS

Rwy 13: Standard.
 Rwy 31: 300'-1/4 or standard with a minimum climb of 205' per NM to 800, or alternatively, with standard takeoff minimums and a normal 200' per NM climb gradient, takeoff must occur no later than 1 200' prior to DER.

LONE STAR DEP CON
 125.2 343.65
 CTAF
 122.7



NOTE: RADAR required.
 NOTE: RNAV 1.
 NOTE: DME/DME/IRU or GPS required.
 NOTE: BDDAY Transition: ATC assigned only.
 NOTE: MRSSH Transition: For aircraft inbound to Shreveport, Jackson and Monroe terminal area airports only.

(CONTINUED ON FOLLOWING PAGE)

NOTE: Chart not to scale.

SC-2, 15 MAY 2025 to 12 JUN 2025

KUSSO ONE DEPARTURE (RNAV)