

VORTAC GGG <b>112.9</b> Chan <b>76</b>	APP CRS <b>306°</b>	Rwy Idg TDZE Apt Elev	<b>9200</b> <b>354</b> <b>366</b>
--	------------------------	-----------------------------	---

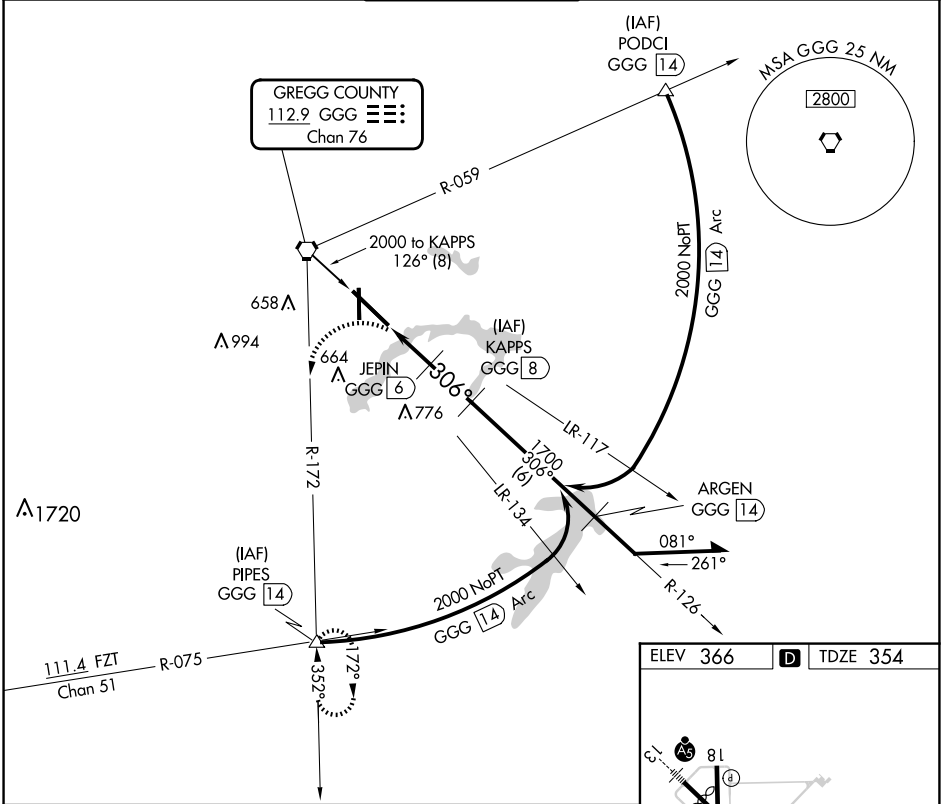
# VOR/DME or TACAN RWY 31

EAST TEXAS RGNL (GGG)

**⚠** When local altimeter setting not received, use Gilmer altimeter setting and increase all MDA 60 feet and increase S-31 Cats C/D/E and Circling Cats C/D/E visibility ½ SM. VDP NA when using Gilmer altimeter setting.

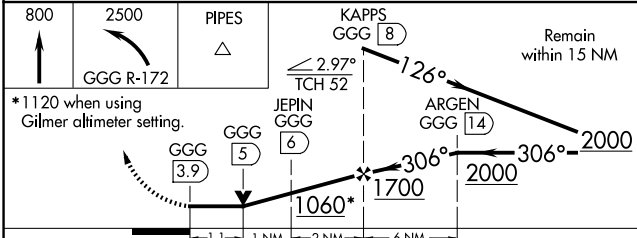
**⚠** MISSED APPROACH: Climb to 800, then climbing left turn to 2500 via GGG R-172 to PIPES INT and hold.

ATIS <b>119.65</b>	LONGVIEW APP CON* <b>124.675 257.975</b>	EASTEX TOWER* <b>119.2 (CTAF) 377.05</b>	GND CON <b>121.6</b>	UNICOM <b>122.95</b>
-----------------------	---	---	-------------------------	-------------------------

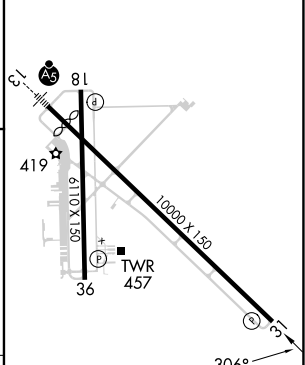


SC-2, 15 MAY 2025 to 12 JUN 2025

SC-2, 15 MAY 2025 to 12 JUN 2025



ELEV 366	<b>D</b>	TDZE 354
----------	----------	----------



CATEGORY	A	B	C	D	E
S-31	780-1 426 (500-1)		780-1¼ 426 (500-1¼)		
CIRCLING	860-1 494 (500-1)		980-1¾ 614 (700-1¾)	1080-2¼ 714 (800-2¼)	1080-2½ 714 (800-2½)

HIRL Rwy 13-31 **1**  
MIRL Rwy 18-36