

WAAS CH 53504 W31A	APP CRS 311°	Rwy Idg TDZE Apt Elev	9200 354 366
---------------------------------	------------------------	-----------------------------	---

RNAV (GPS) RWY 31

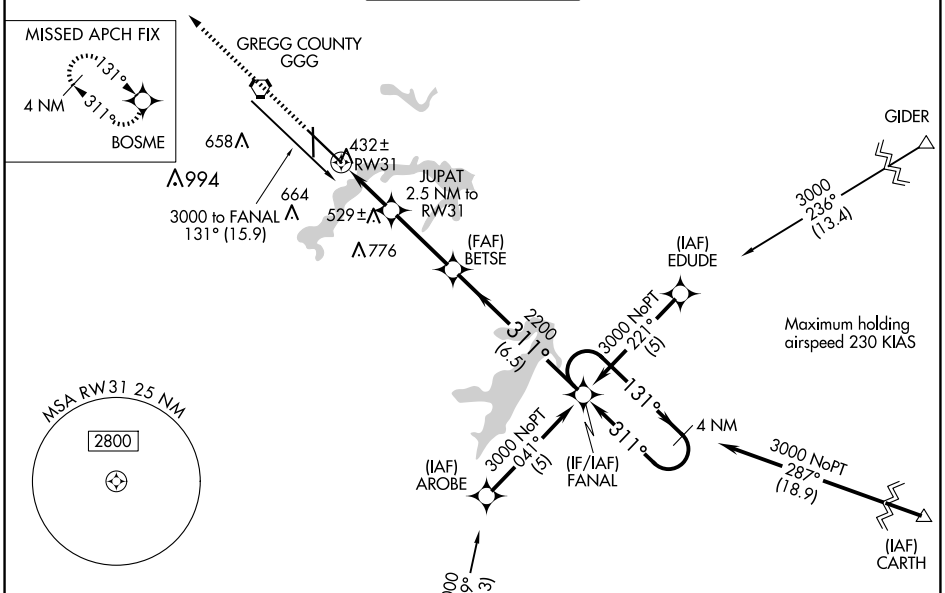
EAST TEXAS RGNL (GGG)

RNP APCH - GPS

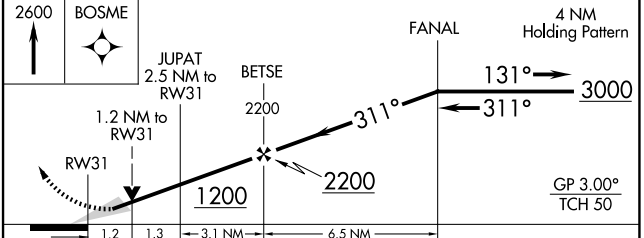
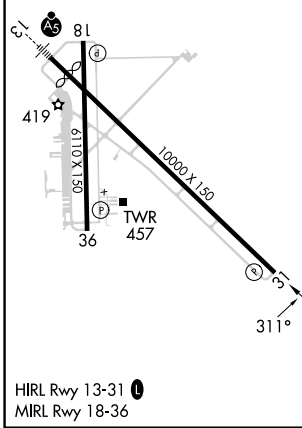
⚠ Baro-VNAV and VDP NA when using Gilmer altimeter setting. For uncompensated Baro-VNAV systems, LNAV/VNAV NA below -15°C or above 54°C. When local altimeter setting not received, use Gilmer altimeter setting and increase all DA 59 feet, all MDA 60 feet. Increase LPV visibility all Cats 1/8 SM and Circling visibility Cats C/D/E 1/4 SM.

MISSED APPROACH:
Climb to 2600 direct BOSME and hold.

ATIS 119.65	LONGVIEW APP CON* 124.675 257.975	EASTEX TOWER* 119.2 (CTAF) 0377.05	GND CON 121.6	UNICOM 122.95
-----------------------	---	--	-------------------------	-------------------------



ELEV 366	D	TDZE 354
----------	----------	----------



CATEGORY	A	B	C	D	E
LPV DA	604-3/4 250 (300-3/4)				
LNAV/VNAV DA	682-1/4 328 (400-1/4)				
LNAV MDA	800-1	446 (500-1)	800-1 3/8 446 (500-1 3/8)	800-1 1/2	446 (500-1 1/2)
CIRCLING	860-1	494 (500-1)	980-1 3/4 614 (700-1 3/4)	1080-2 1/4 714 (800-2 1/4)	1080-2 1/2 714 (800-2 1/2)

SC-2, 15 MAY 2025 to 12 JUN 2025

SC-2, 15 MAY 2025 to 12 JUN 2025